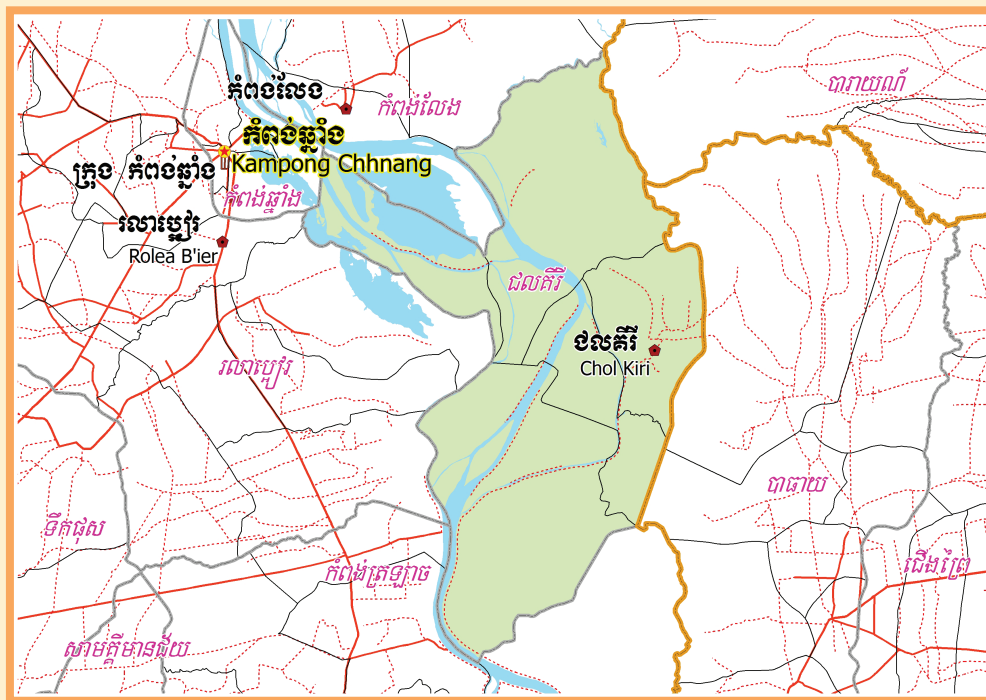


KINGDOM OF CAMBODIA
Nation Religion King



**National Committee for Sub-National
Democratic Development (NCDD)**



CHOL KIRI DISTRICT DATA BOOK 2009

District Code Nr: 402

Kampong Chhnang Province

October 2009

Chol Kiri District Data Book 2009

District Code Nr: 402

Kampong Chhnang Province

Table of Contents

List of Abbreviations	i
Glossary.....	ii
Preface	vi
Introduction	vii
SECTION A: GEOGRAPHY	1
1 Administration and Infrastructure.....	3
2 Land Use and Natural Resources.....	5
3 Geography	7
3.1 Land Area	7
3.2 Distances between Offices	7
SECTION B: DISTRICT PROFILE	9
1 General Information	11
1.1 Population of the District.....	11
1.2 Occupations	12
1.3 Property	14
2 Infrastructure and Economy.....	16
2.1 Roads in meters over 3 years.....	16
2.2 Sewerage Pipes in meters over 3 years.....	16
2.3 Drainage and Bridges	16
2.4 Services in the District	16
2.5 Agriculture.....	17
3 Social Aspects	27
3.1 Education	27
3.2 Health.....	33
3.3 Water and Sanitation	34
3.4 Vulnerable groups.....	38
3.5 Migration	40
4 Natural Resources and Environment (NRE).....	42
4.1 Families involved with NRE issues over 3 years	42
4.2 Percentage of Families involved with Natural Resource issues, by Commune, for 2008	42
4.3 Percentage Houses with access to Garbage collection and Families affected by environmental Pollution, by Commune, for 2008	42
4.4 Percentage Families using chemical Fertilizer and chemical Pesticides, by Commune, for 2008 ..	43
5 Administration and Security	43

5.1	Birth Registration across 3 years.....	43
5.2	Number of unregistered Infants born in 2008, by Commune	43
5.3	Registered criminal Cases over 3 years.....	43
5.4	Registered criminal Cases per 10,000 people, by Commune, for 2008.....	43
5.5	Number of registered Land Disputes, by Commune, in 2008	44
6	Gender	44
6.1	Registered Domestic Violence over 3 years.....	44
6.2	Percentage of registered cases of Families experiencing domestic Violence, by Commune, in 2008	44
6.3	Women's involvement over 3 years.....	44
6.4	Percentage of Female Participants in Civil Society and of 18-60 year women with uncertain Jobs, by Commune, in 2008	45
6.5	Female-headed Households over 3 years.....	45
6.6	Percentage female-headed Households and with Children of less than 5 years old, by Commune, in 2008	45
7	Indigenous People in the District	46
7.1	Ethnic Minorities in the District over 3 years.....	46
7.2	Other Minorities in the District over 3 years.....	46
	SECTION C: PLANS AND PROJECTS	47
8	Priorities and Plans	49
8.1	Priorities of Commune Councils for 2009 in the District by Sector	49
8.2	Temporary Agreements by Commune, for 2009	53
8.3	Outputs, estimated and actual costs of C/S Fund Projects between 2005 and 2008, by Commune	65
8.4	Total Expenditure on C/S Fund Projects by sector and commune between 2005 and 2008.....	65
8.5	Actual 2009 C/S Fund projects by Commune	66
9	District level Projects from 2006 to 2009	67
9.1	District Initiative Infrastructure Projects from 2006 to 2009	67
9.2	District Initiative Service Projects from 2006 to 2009	68
9.3	Inter Commune Council Projects in 2008 and 2009	70
9.4	Other Projects in 2008 and 2009	72
	SECTION D: SERVICES AND ORGANIZATIONS	73
10	Infrastructure.....	75
10.1	Length of and Expenditure on Roads in 2008, by District	75
10.2	Scale of and Expenditure on Irrigation in 2008, by District.....	75
10.3	Power Supply in 2008, by District	76
11	Health Facilities.....	77

11.1 Health Facilities in the Province, by Operational District.....	77
11.2 Health Facilities and Staff in the province, by Operational District.....	77
11.3 Deliveries in 2007 in the Province, by Operational District.....	79
12 Education	80
12.1 Schools, Classes, Students, Staff, for for all levels, for 2007/2008 by District.....	80
12.2 Characteristics of Schools and School Principals for 2007/2008 by Commune	80
12.3 Enrolment by Level of Education, 2006/2007 by Commune	81
12.4 Enrolment by Level of Education, 2007/2008 by Commune	81
12.5 Aspects of Enrolment for 2007/2008 by Commune.....	81
12.6 School Buildings for all schools in the District for 2007/2008, by Commune	82
12.7 Conditions of Classrooms and Existence of Separate School Office and Library, by Commune	82
12.8 Community Participation and Financing across all schools in the District for 2007/2008 by Commune	82
12.9 Percentage Student Flow Rates and Graduation by level 2006/2007, by Commune	83
13 Staff and Resources at the District	84
13.1 District Councilors elected in 2009	84
13.2 Committees of the Council.....	84
13.3 Board of Governors.....	84
13.4 Offices under Sala Krong, Sala Srok and Sala Khan	85
13.5 Municipality/District/Khan line offices.....	85
13.6 Properties and Equipment of District Administration	85
13.7 Registered Revenue of the District Administration in 2008	86
13.8 Services in the District	86
13.9 Civil Society Organizations active in the District.....	87
13.10 Private Sector Organizations.....	88
SECTION E: POVERTY DATA	89
14 Data on Poverty	91
14.1 Predicted Poverty Rates for 2009, by commune	91
14.2 Poverty data from survey.....	91

List of Abbreviations

#	Number
AGR	Agriculture
BR	Birth Registration
C. Pilot	Piloted Commune
C/S	Commune / Sangkat
CBO	Community-Based Organization
CDB	Commune Database
CDPD	Commune Development and Planning Database
CIP	Commune Investment plan
CLTS	Community Led-Total Sanitation
Comm.	Commune
Com Cov	Commune Covered
CPA	Complementary Package of Activities
CPS	Community Preschool
CCWC	Commune Committees for Women and Children
DANIDA	Danish International Development Agency
DDLG	Democratic Development and Local Governance Project (EC-UNDP)
DFID	Department For International Development (UK)
DIP	District Initiative Project
DIS	District Information System
District PDRD	District Office of Rural Development
District WP	District Work Plan
DIW	District Integration Workshop
DoLA	Department of Local Administration
Dr	Doctor
DWRM	District Office of Water Resource and Meterology
ECD	Early Childhood education (part of PE)
EMIS	Education Management Information System
Event IC	Celebration of International Days
FDH	Former District Hospital
GTZ	German Society for Technical Cooperation (Gesellschaft für Technische Zusammenarbeit GmbH)
Ha	Hectare
HC	Health Center
HC (NB)	Health Center (no building)
HH	Headed Household
HSI	Intervention for Health
HP	Health Post
HW	Hand Washing
ICC	Inter Commune Council
IFAD	International Fund for Agricultural Development
IND	Industry
Inter-commune	Inter-Commune Project Management Committee or Inter-commune project
IO	International Organization
LASED	Land Allocation for Socio-Economic Development
LGCR	Local Governance for Children's Rights
M&E	Monitoring and Evaluation
MA	Medical Assistant
MoEYS	Ministry of Education, Youth and Sports
MoH	Ministry of Health

MoP	Ministry of Planning
MPA	Minimum Package of Activities
MW1	Primary Midwives
MW2	Secondary Midwives
n/a	Not available
NCD	National Contracts Database
NCDD	National Committee for Sub-National Democratic Development
NGO	Non-Governmental Organization
NRML	Natural Resources Management and Livelihood
NU1	Primary Nurse
NU2	Secondary Nurse
OD	Operational District
ODF	Open Defecation Free
Ope. Costs	Operational Costs
Others	Other Staff
PBW	Public Works
PDoEYS	Provincial Department of Education, Youth and Sport
PDRD	Provincial Department of Rural Development
PDWRM	Provincial Department of Water Resource and Meteorology
PE	Parenting Education
PHAST	Participatory Hygiene and Sanitation Transformation
PHD	Provincial Health Department
PID	Project Information Database
PMC	Project Management Committee
Pop 04-05	Population Covered 2004 or 2005
PSDD	Project to Support Democratic Development through Decentralization and Deconcentration
RRD	Rural Road Development
RH	Referral Hospital
RILGP	Rural Investment and Local Governance Project
RPRP	Rural Poverty Reduction Program
RuLIP	Rural Livelihoods Improvement Program
SIDA	Swedish International Development Cooperation Agency
SPPA	Senior Provincial Program Advisor
TBA	Traditional Birth Attendant
UNDP	United Nations Development Project
UNICEF	United Nations Children's Fund
Vil	Village
Vil Cov	Village Covered
VIL-HC	Distance from Village to Health Center
WASH	Water, Sanitation and Hygiene
WRM	Water Resource and Meteorology

Glossary

C/S Fund: The Commune/Sangkat Fund is established and managed by the Government of Cambodia to provide financial support for development projects and administrative costs of Commune/Sangkat Councils. The amount is determined as a percentage of the National Budget (for 2009: 2.8% over the 2008 budget) and is expected to increase gradually over the years. The total 2009 budget under this fund is \$ 27,643,902 (of which \$ 19,272,170 is for Development Projects and \$ 8,371,731 for Administration). Under the Rural Investment and Local Governance Project the World Bank currently reimburses the costs of development projects if these meet the Bank's criteria.

CDB: the Commune Data Base is a national database, compiled by the Ministry of Planning, on the basis of detailed questionnaires, completed at village and commune level, which are then sent to the Departments of Planning for data entry. The most recent round of data collection took place at the end of 2008 (and is reflected in the District Data Books). Commune, District and Provincial Profiles can be generated from this database and should be available from provincial Departments of Planning.

CDPD: the Commune Development and Planning Database is a database maintained by Departments of Planning and Ministry of Planning, recording proposed activities as determined and prioritized by Commune and Sangkat Councils; the Temporary Agreements between these councils and supporting agencies, as decided at District Integration Workshops and details on projects that actually take place at commune, district and provincial levels.

CIP: The Commune Investment Plan is a rolling three-year plan, developed and decided by the Commune or Sangkat Council. It sets priorities and identifies the projects proposed for the years to come.

Commune and Sangkat (C/S): the Communes (in rural areas) and Sangkats (in urban areas) are the lowest and smallest units of local government. Councils are elected directly, once in five years, for the 1417 Communes and 204 Sangkats. In the C/S there are 14,119 villages, which have Village Chiefs, but don't constitute a formal level of local government.

DIP: the District Initiative Project is jointly supported by the MDLF (Multi-Donor Livelihood Facility (supporting the NRM&L Program)) and PSDD. In 2009 it covers 106 districts, 60% of the total in the country, with a budget of \$ 3.2 million. It is focused on capacity development in planning, democratic development, public competitive procurement, financial management and service delivery.

DIS: The District Information System is a national database maintained by NCDD, recording resources, staff, revenue, infrastructure and equipment available in the 193 Districts and Khans throughout the country. The last update took place in July 2009.

District, Municipality and Khan constitutes the third level of Government in Cambodia. There are 159 rural Districts, 26 Municipalities and 8 Khans of Phnom Penh Capital. They all have Councils which were, for the first time, elected in May 2009, by the Commune/Sangkat Councilors. These councils have a mandate for 5 years.

DIW: District Integration Workshops are held between July and October, to bring Commune/Sangkat Councils, looking for support for their projects, together with the governmental and non-governmental agencies that may provide support.

ICC: Inter Communes Council projects are executed in 10 provinces under the Democratic and Decentralized Local Governance Project (DDLG). This five year project (2006-2010) is executed by Ministry of Interior and funded by the European Commission and UNDP. The project focuses on improving dialogue partnership and accountability; create a network of Commune Councils at the provincial and national level and support and contribute to local area development for poverty reduction. The work under the ICC component supports investments and services formulated through inter-commune dialogue and planning.

MEDiCAM: A non-profit and non-partisan membership organization for NGOs active in Cambodia's health sector. It is the primary networking agency for health-related NGOs.

NCDD: the National Committee for sub-National Democratic Development is the inter-ministerial body charged with the implementation of the Organic Law (a key legislative document, adopted in 2008, outlining the envisaged decentralization). NCDD also channels substantial financial assistance by a number of Development Partners, to projects and programs at various levels. This amounted to over \$ 91 million in 2008. More information at: www.ncdd.gov.kh. This website also provides access to reports, manuals, legal documents, details on projects and more.

OD: the Operational Districts are the districts as defined and used by the Ministry of Health. These do not coincide with the 193 (Administrative) Districts and Khans, as used by all other RGC agencies. The Operational Districts are usually larger, and so there are 77 Operational Districts against 193 administrative Districts and Khans. However they do fit within the boundaries of administrative provinces.

PID: The Project Information Database is the database maintained by NCDD at national and sub national level, to follow all aspects of projects by Commune and Sangkat Councils, including the C/S Fund projects

Provincial Investment Fund (PIF)

The Provincial Investment Fund is allocated to all Provinces and Municipalities according to a population based formula. Part of the fund is earmarked for support to planning activities of the Provincial / Municipal Department of Planning; and to gender mainstreaming activities of the Provincial Department of Women's Affairs. The remaining "un-earmarked PIF" is allocated by PRDC to sectoral technical departments against established criteria and in response to proposals with prioritisation taking into account: priorities formulated by the CS Councils and aggregated by District into District Priority Activities Matrices (DPAM); alignment with national planning and poverty alleviation criteria, complementarity with other planned activities; and performance of the Department concerned in implementation of activities in previous years. With this provisional allocation, the Department then programs activities through the District Integration Process. Finally, the agreed activities, plus support costs amounting to no more than 25% of the total, are included in a sub-contract signed between PRDC and the Department, pursuant to the overall PSDD contract signed between NCDD and PRDC. Total budget has been around \$ 2 million per year.

Province: the 23 Provinces and Phnom Penh Capital City represent the 2nd layer of government. They vary in size, from very small, like Kep (approx. 36,000 people) and Pailin (approx. 70,000 people), or large but with small populations, like Mondulkiri (over 60,000 people), and Ratanakiri (over 153,000) to densely populated and large, like Kampong Cham (over 1.7 million people) and Kandal (approx. 1.4 Million people).

PSDD: the Project to Support Democratic Development through Decentralization and Deconcentration is funded by DFID (UK), SIDA (Sweden) and UNDP and runs from 2006 till the end of 2010 (including a one year extension). Annual budgets range from \$ 11 million to over \$ 18 million. The project provides core technical support to NCDD and to the provinces, financial support to the C/S Fund, District Initiative, Provincial Investment Fund and capacity building support through training, studies and advisory services.

RILGP: The Rural Investment and Local Governance Project is a World Bank funded project that provides substantial support to C/S Fund projects and to developing the required infrastructure, policies, systems and skills. It started in 2003 with a Loan for \$ 22 million for 2003-2007 and was then extended with a Grant of \$ 36 million for the period of 2007-2010. Discussions about a possible RILGP 2 are taking place between RGC and the World Bank.

RPRP: the Rural Poverty Reduction Project is a seven year project from 2004 till 2010, funded by IFAD and UNDP and implemented through the Ministry of Agriculture, Forestry and Fishery, supported by the Ministry of Interior and facilitated by NCDD. The project is active in the provinces Prey Veng and Svay Rieng and focuses on 120,600 households below poverty line. The objective is poverty reduction with the active participation of the poor through improved livelihoods, Strengthened capacity, Sustainable farming systems and natural resource management, new and/or rehabilitated infrastructure development, increase accessibly to technology, services and markets for their economic and social development.

RULIP: the Rural Livelihoods Improvement Project is implemented by the Ministry of Agriculture Forestry and Fisheries (MAFF)' Project Support Unit- PSU, with the NCDD playing the role of cooperating agency. Funded by IFAD and UNDP, the project will run till 2014. The target group consists of poor households who have little or even no land, few livestock or other assets and often many dependents. The main goal of the project is to directly or indirectly improve the livelihood systems, food security and incomes of a total of 33,900 rural poor, ethnic minority and female headed households in targeted village of Kratie, Preah Vihear and Ratanakiri provinces in a sustainable manner.

Seth Koma: The UNICEF funded Seth Koma program focuses on measurable action for children and women. During 2006 -2010 it is implemented in six provinces. Government and UNICEF pursue a set of inter-related goals, addressing critical stages of the life cycle of the child: a) Mothers have safe pregnancies and deliveries and healthy newborns; b) best possible start in life of infant; c) Children enter schools at the right age of six years; d) Children are protected from exploitation, abuse, violence, discrimination and other risks; and e) Youth and adolescents acquire life skills, express their views, participate in the decisions.

Preface

The Government of Cambodia attaches great importance to optimal use of scarce resources and to participatory planning and management at all levels. The Organic Law which was adopted in 2008 provides the legal context for further steps towards improving and decentralizing planning, management and monitoring, and towards greater accountability and transparency of institutions at sub-national levels.

The Government has established elected Councils at the sub-national levels, and we will progressively give them the responsibilities, together with the human and financial resources, to deliver a wide range of public services. They will be more democratic, more efficient, more transparent and accountable, better at addressing gender and other inequalities, and at fighting corruption. We recognize that development does not come from government alone; it needs the involvement of citizens, civil society and the private sector, and the new system will facilitate this.

A central element in this process is the availability of information on any aspect of development to all concerned parties. The newly elected Councillors at District and Khan level, line departments operating at these levels, but also NGOs, Development Partners, Commune Councillors and citizens throughout Cambodia need information on problems and requirements, resources and opportunities, services and agencies, plans and projects. They will need such information to better understand the present situation, set targets for the future, monitor progress, know what others are doing and to apply resources wisely and this is the reason the District Data books will be so valuable.

The District Data Books are a major step towards full transparency and towards informed planning and decision-making. They provide all available data at District, Khan, Commune and Sangkat level in easily accessible formats, in Khmer and English, through over 16,000 printed copies, CD-ROMs and the NCDD website.

This is the first time in Cambodia (and possibly in South East Asia) that such detailed information is made so widely available and NCDD should be commended for the hard work that has gone into this. We also thank the Ministry of Planning, which provided the detailed data of the Commune Data Base, the sectoral ministries and provincial authorities who contributed data and the Development Partners who provided financial support.

It is our sincere hope that the publication of the District Data Books will strengthen capacities, especially at district levels, for evidence-based development planning. We also hope that this information will deepen the understanding among Ministries, Provincial Authorities, Development Partners, NGOs and research agencies of the realities at commune and district levels.

We call upon all to use and distribute this information, complement or correct where appropriate and to contribute new data in the years to come.

Sar KHENG

Deputy Prime Minister, Minister of Interior and Chairman of NCDD

Introduction

Purpose

The purpose of the District Data Books is to bring together information on any aspect of life and development of Districts, Khans, Communes and Sangkat, together and make this widely available. The primary targets are the newly elected District Councilors, district level line departments, provincial agencies, Development Partners and NGOs operating at this level. They need detailed knowledge on current living conditions, natural resources, infrastructure, agriculture and other economic activities, current service levels, past and planned projects and available resources.

While much information exists on many of the above aspects, it is often hard to access that information and much is lost to reports, databases and statistics that are not widely shared. Data are often only available in one language and often out-of-date, and many reports cover only one sector or region.

We found that these problems are especially acute at the district level. Now that Districts are becoming a much more significant level of local government and development planning, there is an urgent need for wide-ranging data to be used for setting base-lines, planning and prioritizing, monitoring and learning.

Approach

We have attempted to identify and compile all available statistics, reports, maps and other data at district and/or commune level. From this we have selected information that is available for all or most districts, reasonably reliable and up-to-date, sufficiently detailed and of possible interest to development planners, decision makers, agencies and citizens.

The major sources of the information in these District Data Books are:

- a) The Commune Data Base information over the years 2006 to 2009 (the most recent data were collected late last 2008), as compiled by the Ministry of Planning
- b) Detailed information directly collected from the Ministry of Health, the Ministry of Education, Youth and Sports and (for maps) the Ministry of Land Management, Urban Planning and Construction
- c) The Project Information Database (PID) at NCDD (up-to-date)
- d) The Commune Development and Planning Database (CDPD) (up to date)
- e) The District Information System (DIS) (updated per Mid 2009)
- f) Direct data collection at provincial and district level on private sector, irrigation, roads, and electricity, through provincial agencies
- g) Medical data collected from MEDiCAM
- h) The ID Poor Project – for poverty data on a number of provinces and districts
- i) NCDD's work on predictive poverty rates
- j) Specific projects for outputs, plans and budgets (Seth Koma, RILGP, RPRP and ICC)

Limitations of the data

We are fully aware that the data we collected are not always complete, consistent or correct. While we have rejected information that was wrong or very incomplete, we decided not to aim for statistical and scientific perfection, but to include information that is useful, relevant

and comprehensive. We also accepted different sources for the same data as this may encourage discussion on the quality of the respective data.

We strongly encourage anyone who notes errors or incompleteness in these data to contact us and to share their data. We hope that the next round of producing such District Data Books can draw on wider sources and more complete data.

We encourage the District Administrations, who receive these data also in digital format, not only to use these for their planning and monitoring, but also to start correcting and updating these data and to share new data with NCDD for future use.

Contents

The information in the following pages is organized in five sections:

- a) **Geographical data:** this section provides maps on infrastructure and administration and on land use and natural resources management. These maps are also provided in large format to all Districts and Khans.
- b) **District Profile:** this presents wide ranging data, covering 2006 – 2009, at district and commune level, extracted from the Commune Data Base, but edited for better understanding.
- c) **Plans and Projects:** this section presents development priorities determined by Commune and Sangkat Councils, Temporary Agreements, outputs and expenditure of major projects at Commune and District level over 2006 – 2008 and plans and budgets for 2009.
- d) **Services and Organizations:** this section provides details on key infrastructure (roads, electricity, irrigation systems) and services in health and education at district and commune level. It also provides an inventory of resources at the District Administration, NGOs operating in the district and private sector agencies active in the district.
- e) **Poverty Data:** this section provides predicted poverty rates for 2009 for all districts and communes and detailed poverty data compiled and processed by the ID Poor project for those that have been covered by this project.

The future

It is our hope that this is the start of a longer-term process. We hope that a next edition of these District Data Books will offer more comprehensive, correct and up-to-date information. We hope that the District Administrations will not only start using this information, but also improve and update it. For this they are all provided with the full data set in digital format.

We invite agencies, projects and experts to send reports, statistics and maps that could be used for a next version to us and we invite all users of the District Data Books to inform us about errors, updates and inconsistencies. Please contact us through info@ncdd.gov.kh

We now invite you to browse through this data book. You may open this randomly or use the table of contents and go to the aspects that have your special interest.

We hope that you will be informed, surprised and assisted. We hope, above all, that this information will lead to a deeper understanding of causes and effects of poverty, to purposeful decisions on how to tackle those causes and to greater transparency in using scarce resources for the benefit of all.

Martin de Graaf
Program Advisor, PSDD/NCD

SECTION A: GEOGRAPHY

1 Administration and Infrastructure

Please see separate folder containing A3 maps.

2 Land Use and Natural Resources

Please see separate folder containing A3 maps.

3 Geography

3.1 Land Area

Total Land Area (ha)	Forest Land Area (ha)		Cultivation Land Area (ha)	Construction Land Area (ha)	Other Land Area (ha)
	Total	Flooded Forest Area			
33083	5620	5620	11790	690	14983

3.2 Distances between Offices

Location	Distance (Km)
From District Office to C/S Office of Chol Sar	0
From District Office to C/S Office of Kaoh Thkov	0
From District Office to C/S Office of Kampong Ous	0
From District Office to C/S Office of Peam Chhkaok	0
From District Office to C/S Office of Prey Kri	0

SECTION B: DISTRICT PROFILE¹

¹ All data in this section come from the Commune Database (CDB) unless otherwise specified. These include primarily new CDB data, collected late 2008, and some data from earlier years. Please note that percentages are rounded to the nearest whole number.

1 General Information

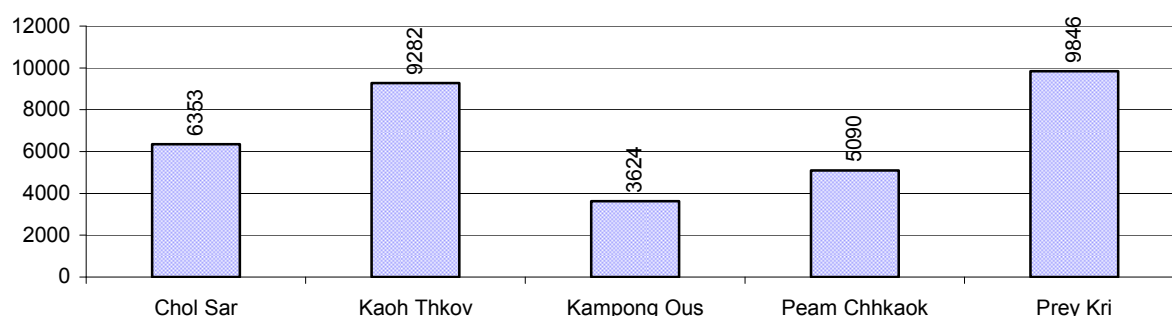
1.1 Population of the District

1.1.1 Total Population

Number of families	2005	2006	2007	2008
Total number of families	6,111 families	6,212 families	6,331 families	6,477 families
Increase (+)/Decrease (-) in nr of families		2%	2%	2%
Total population	31,102 pers	34,554 pers	33,855 pers	34,195 pers
Increase (+)/Decrease (-) in nr of people		11%	-2%	1%
Number of female Headed Households (HH)	796 families	909 families	882 families	874 families

Note: Percentages of population and increase/decrease are calculated on basis of the previous year. A negative sign in front of the percentage indicates a decrease in population.

1.1.2 Population, by Commune, in 2008



1.1.3 Population, by Age Group, over 3 years

Population by age group	2006	2007	2008	
	%	%	%	Number
Age 0-5 years (as percentage of the population)	15%	15%	15%	5,184 persons
Male 0-5 yrs	54%	49%	49%	2,555 persons
Female 0-5 yrs	46%	51%	51%	2,629 persons
Age 6-17 (as percentage of the population)	34%	32%	32%	10,972 persons
Male 6-17 yrs	55%	51%	51%	5,617 persons
Female 6-17 yrs	45%	49%	49%	5,355 persons
Age 18-60 (as percentage of the population)	46%	48%	47%	16,173 persons
Male 18-60 yrs	52%	47%	46%	7,513 persons
Female 18-60 yrs	48%	53%	54%	8,660 persons
Age 61 above (as percentage of the population)	5%	5%	5%	1,866 persons
Male 61	49%	40%	41%	759 persons
Female 61	51%	60%	59%	1,107 persons

Note: The overall percentage for each age group is calculated on the basis of the total population. The gender distribution of each group is calculated on the basis of the population within that particular age group.

1.2 Occupations

1.2.1 Percentage of families with a particular Occupation over 3 years

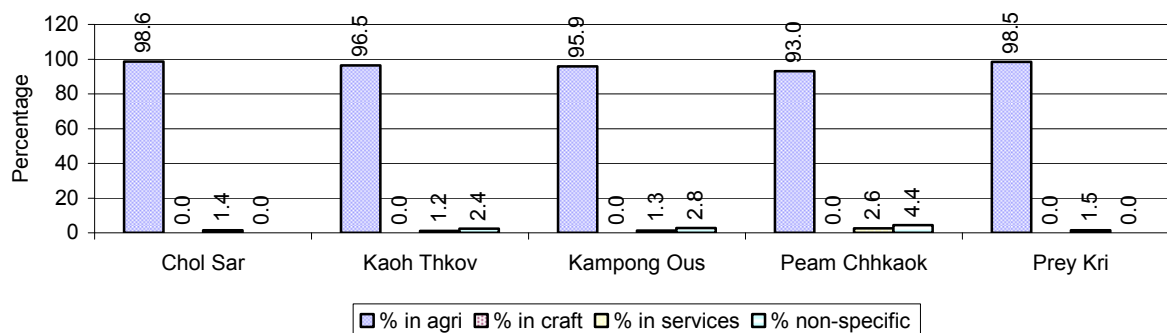
This table shows the percentage of the population who have a particular occupation (job), for example the percentage of the population in the district who are rice farmers, furniture crafter, trader, etc.

Description	2006	2007	2008	
	%	%	%	Number
Families whose main occupation is agriculture	95%	96%	97%	6,274 Families
Families whose primary occupation is rice farming	84%	85%	86%	5,583 Families
Families whose primary occupation is cultivating long-term crops	0%	0%	0%	10 Families
Families whose primary occupation is cultivating short-term crops	4%	5%	3%	217 Families
Families whose primary occupation is cultivating vegetable	1%	0%	1%	75 Families
Families whose primary occupation is fisherman	5%	5%	6%	375 Families
Families whose primary occupation is livestock farmer	0%	0%	0%	14 Families
Families whose primary occupation is NTFP collection	0%	0%	0%	0 Families
Families whose main occupation is craft work	0%	0%	0%	0 Families
Families, whose main occupation is in furniture craft, wooden, rattan, vine, bamboo	0%	0%	0%	0 Families
Families whose main occupation is in metal, aluminum, glass goods production	0%	0%	0%	0 Families
Families whose main occupation is food production	0%	0%	0%	0 Families
Families whose main occupation is tire, plastics and rubber goods production	0%	0%	0%	0 Families
Families whose main occupation is textile, clothing goods production	0%	0%	0%	0 Families
Families whose main occupation is in other production, not listed above	0%	0%	0%	0 Families
Families whose main occupation is services	1%	2%	2%	99 Families
Families whose main occupation is trade	1%	1%	1%	64 Families
Families whose main occupation is repair	0%	0%	0%	4 Families
Families whose main occupation is providing transport services	0%	0%	0%	17 Families
Families whose main occupation is providing other services	0%	0%	0%	14 Families
Families whose main occupation is not clear (or multi)	4%	2%	2%	104 Families

Note: The occupation percentages are calculated on the basis of the total number of families.

1.2.2 Percentage Families that work in one of four occupational sectors, by Commune in 2008

This table indicates the percentage of families involved in one of four occupation types: agriculture, craft, services or non-specific (other). Please note agriculture includes forestry activities such as cutting down trees and gathering gum from the trees.



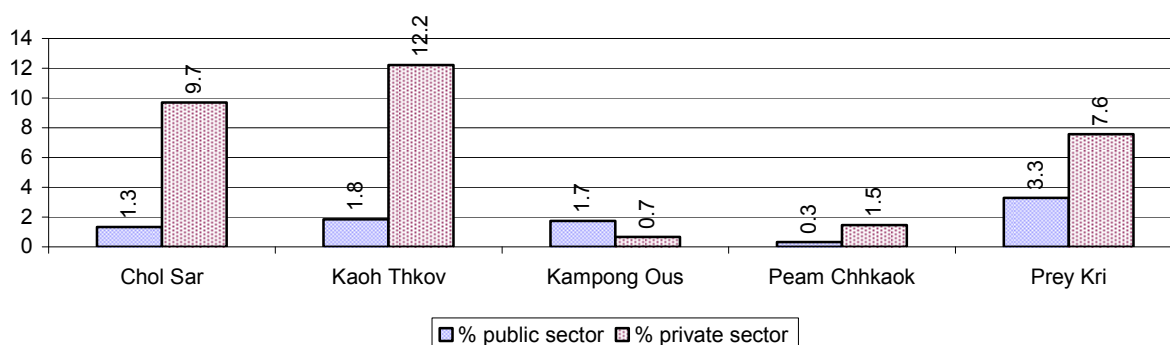
Note: Calculated on the basis of the total number of families within a commune.

1.2.3 Percentage of Families with public Sector, private Sector or uncertain Jobs, over 3 years

Description	2006	2007	2008	
	%	%	%	Number
Families that have a family member who is a government official, staff or worker	2%	2%	2%	123 families
Families that have a family member who is a private sector staff or worker	4%	7%	8%	488 families
Number of people aged 18-60 with uncertain/irregular jobs	0%	1%	2%	301 persons

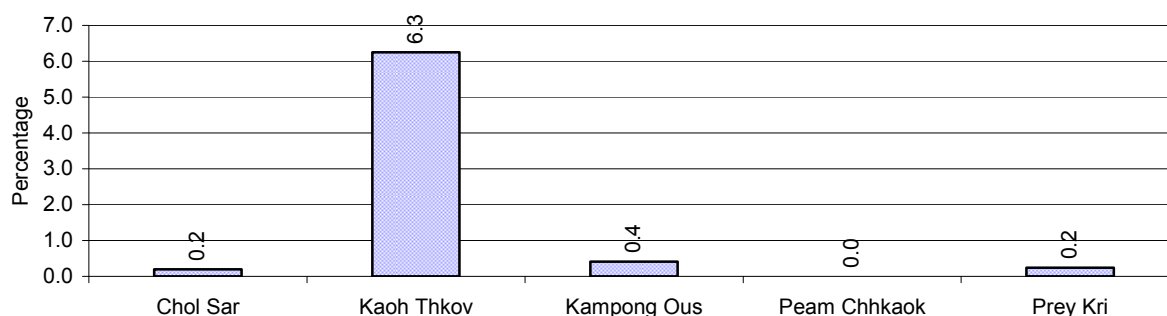
Note: In the first two rows percentages are calculated on the basis of the total number of families. In the third row the percentage is calculated on the basis of the total number of people aged 18-60 years.

1.2.4 Percentage of Families with public or private Sector Jobs, by Commune in 2008



Note: Calculated on the basis of the total number of families in the commune

1.2.5 Percentage of People aged 18-60 years with uncertain/irregular Jobs, by Commune, in 2008.



1.3 Property

1.3.1 Housing types and facilities over 3 years

This table shows the percentage of people living in a certain type of house. It also indicates how many houses have electricity or battery powered lights and how many have TV.

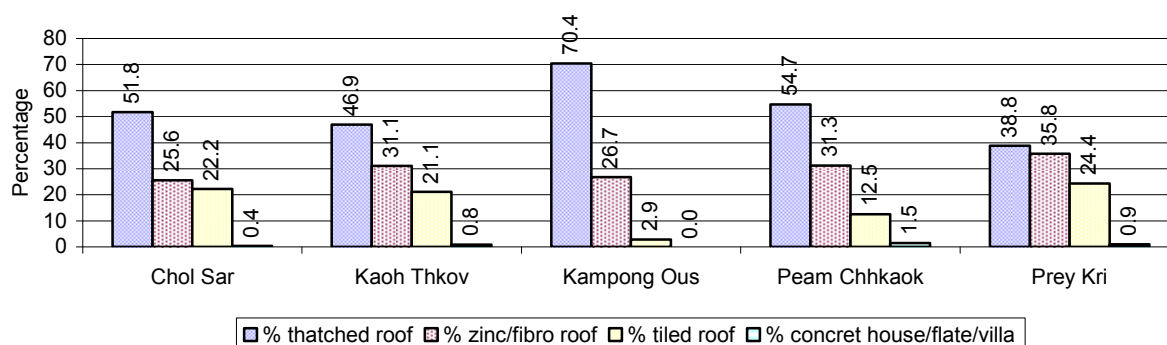
House Type	2006	2007	2008	
	%	%	%	Number
House with thatched roof	56 %	53 %	49 %	2,694 houses
House with zinc/fibro roof	25 %	28 %	31 %	1,689 houses
House with tiled roof	18 %	18 %	19 %	1,029 houses
Flats/apartments (with many families living)	0 %	0 %	0 %	0 houses
Concrete house or flat (with one family living)	1 %	1 %	1 %	41 houses
Villa house	0 %	0 %	0 %	4 houses
Houses with electricity	0 %	0 %	0 %	15 houses
Houses with battery light	92 %	91 %	94 %	5,119 houses
Houses with TV	71 %	75 %	80 %	4,364 houses

Note: Calculated against the total number of houses

1.3.2 Families living on public Land or without a permanent House

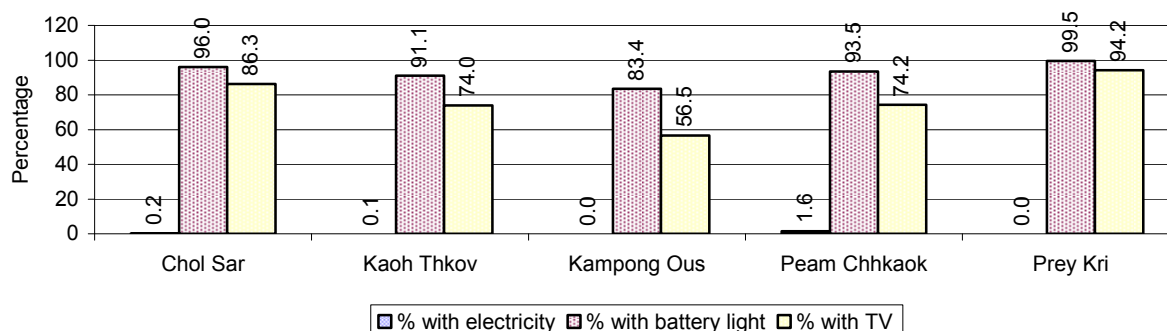
Living situation	2006	2007	2008
Families living in a house on public land	191 families	80 families	79 families
People, without permanent housing	9 person(s)	68 person(s)	5 person(s)

1.3.3 Percentage of Population living in a particular type of House, by Commune, in 2008



Note: Calculated against the total number of houses in each commune

1.3.4 Percentage of Houses with Electricity, Battery Lights and/or TVs, by Commune, in 2008



Note: Calculated against the total number of houses in each commune

1.3.5 Types of Vehicles and their ratio to Families across 3 years

This table shows the number of families per vehicle in the district. The last column shows the total number of each type of vehicle in the district for 2008.

Description	2006 ratio	2007 ratio	2008	
			Ratio	Number
Bicycle and bicycle with trailer	2	2	2	3,224
Ox-carts and horse-carts	13	14	22	301
Motorbike/with trailer	19	14	12	543
Motor tri-cycle	N/A	N/A	N/A	0
Large Transportation				
Total number of cars/trucks	270	171	249	26
Locally made vehicles	1,035	317	720	9
Trucks for goods transport	365	422	405	16
Buses/mini buses for passengers	N/A	N/A	N/A	0
Family cars	N/A	3,166	6,477	1
Agriculture machinery				
Tractors used for plowing	777	791	925	7
Power-tillage used for plowing	14	10	8	783
Other type of machinery				
Other type of machinery	6,212	N/A	N/A	0
Water transportation				
Row boats	1	1	1	4,646
Total number of motor boats				
Motor boats used for fishing	2	2	2	3,376
Motor boats used for passengers	3	3	3	2,418
Motor boats used for goods transporting	2,071	528	463	14
	10	8	7	944

Note: Ratio of families to a particular type of vehicle is the result of the total number of families divided by total number of that type of vehicle. Other types of vehicles, such as bulldozer, excavator, rollers etc. are not listed.

2 Infrastructure and Economy

2.1 Roads in meters over 3 years

Description	2006	2007	2008
Bituminous road	0 m	0 m	0 m
DBST, Macadam road	0 m	0 m	0 m
Concrete road	0 m	0 m	0 m
Laterite road	3,387 m	2,800 m	4,257 m
Constructed earth road	7,307 m	7,307 m	9,125 m
Un-constructed earth road	1,248 m	0 m	13,995 m

2.2 Sewerage Pipes in meters over 3 years

Description	Sewage pipe length		
	2006	2007	2008
Total length of sewage pipe, diameter 30-50 cm	0 m	0 m	0 m
Length of newly constructed sewage pipe, diameter 30-50 cm	0 m	0 m	0 m
Length of sewage pipe, diameter 30-50 cm needs repair/rehabilitation	0 m	0 m	0 m
Total length of sewage pipe, diameter of pipe 60-100 cm	0 m	0 m	0 m
Length of newly constructed sewage pipe, diameter 60-100 cm	0 m	0 m	0 m
Length of sewage pipe, diameter 60-100 cm needs repair/rehabilitation	0 m	0 m	0 m
Sewage pipe, diameter of pipe over 100 cm	0 m	0 m	0 m
Length of newly constructed sewage pipe, diameter over 100 cm	0 m	0 m	0 m
Length of sewage pipe, diameter over 100 cm needs repair/rehabilitation	0 m	0 m	0 m

2.3 Drainage and Bridges

Construction Type	2006		2007		2008	
	place(s)	Length	place(s)	Length	place(s)	Length
Single pipe culvert	42	192m	36	144 m	41	203 m
Double-pipe culvert	0	0m	0	0 m	1	13 m
Box pipe culvert	7	82m	5	62m	7	72 m
Wooden bridge	0	0m	0	0m	1	7 m
Concrete bridge	4	36m	4	36m	8	223 m
Bale bridge	0	0m	0	0m	0	0 m
Spillway construction	0	0m	0	0m	0	0 m

2.4 Services in the District

Descriptions	Number of places by year		
	2006	2007	2008
Public			
Electricity generating stations	0	0	11
Health clinics	0	0	0
Private			
Bicycle and motorcycle repair places	13	12	15
Agricultural machinery, tools and equipment repair places	6	4	4
Electronic tool repair places	5	5	4
Battery-charging services	27	31	33
Handicraft places, wooden furniture and forest by-products	1	1	1
Other handicraft places (excluding furniture)	0	0	0
Small-scale services (hairstylist, phone service, massage,	2	1	3

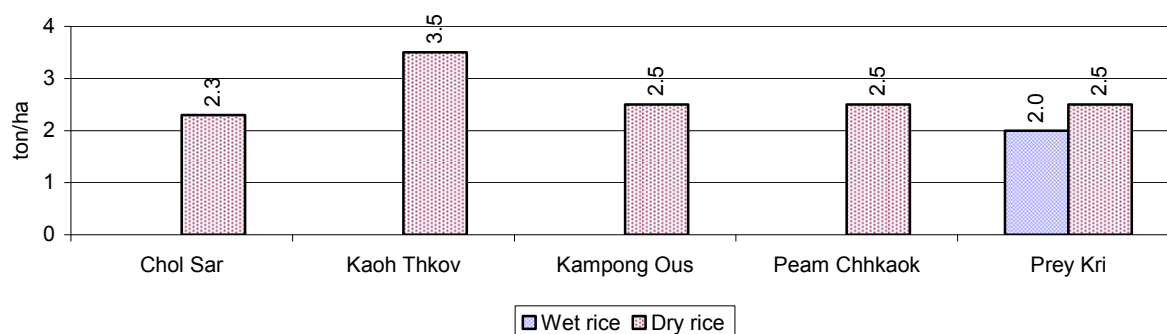
Descriptions	Number of places by year		
	2006	2007	2008
Karaoke, etc)			
Small-scale food shop businesses (Food, groceries, drink shop, etc)	17	0	0
Small-scale rice mills	179	189	210
Medium or large-scale rice mills	1	1	1
Small-scale markets	0	0	0
Large-scale market	0	0	0
Alcohol refinery places	189	191	192
Pharmacies and small drug stores	0	0	0
Hotels	0	0	0
Guest houses	0	0	0
Restaurants	0	0	0
Gasoline stations	0	0	0

2.5 Agriculture

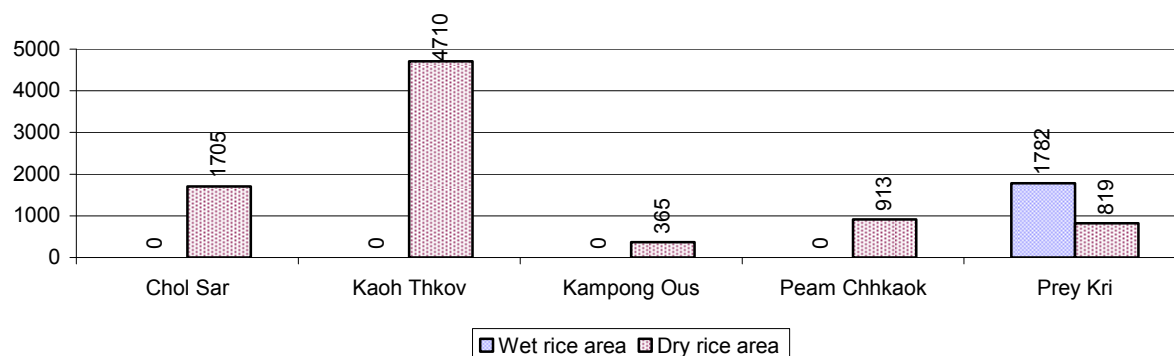
2.5.1 Rice cultivation in the District over 3 years

Description	2006	2007	2008
Total dry rice land area	7,853 ha	8,715 ha	8,566 ha
Actual dry rice cultivation area	7,650 ha	8,657 ha	8,512 ha
% actual cultivation to total land	97%	99%	99%
Total dry rice production	17,289 tonne(s)	21,643 tonne(s)	22,641 tonne(s)
Average dry rice yield	2.3 tonne(s)/ha	2.5 tonne(s)/ha	2.7 tonne(s)/ha
Total wet rice land area	1,782 ha	1,782 ha	1,782 ha
Actual wet rice cultivation area	1,782 ha	1,782 ha	1,782 ha
% actual cultivation to total land	100 %	100%	100%
Total wet rice production	2,673.00 tonne(s)	2,673.00 tonne(s)	3,564.00 tonne(s)
Average wet rice yield	1.5 tonne(s)/ha	1.5 tonne(s)/ha	2.0 tonne(s)/ha
Total intensive rice land area	1,270 ha	0 ha	0 ha
Actual intensive rice cultivation area	- ha	- ha	- ha
Average intensive rice yield	- tonne(s)/ha	- tonne(s)/ha	- tonne(s)/ha
Actual upland rice cultivation area	0 ha	0 ha	0 ha
Total upland rice production	- tonne(s)	- tonne(s)	- tonne(s)
Average upland rice yield	- tonne(s)/ha	- tonne(s)/ha	- tonne(s)/ha

2.5.2 Estimated wet and dry Season Rice Yield in tonne(s)/Ha, by Commune, in 2008



2.5.3 Cultivated wet and dry Season Rice areas in Ha, by Commune, in 2008



2.5.4 Estimated intensive Rice Yields in tonnes/Ha, by Commune, for 2008

There were no estimated intensive rice yields in this District in 2008

2.5.5 Estimated upland Rice Yield in tonnes/Ha, by Commune, for 2008

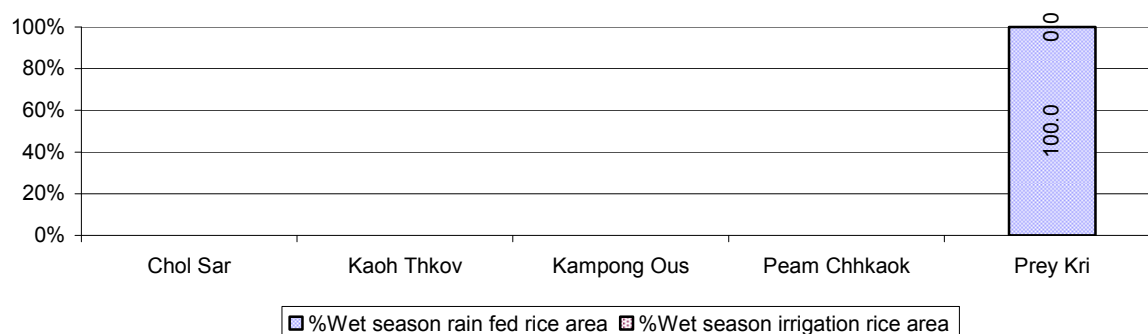
There were no estimated upland rice yields in this District in 2008

2.5.6 Wet season Rice irrigation across 3 years

Description		2006	2007	2008	
		%	%	%	Number
Total area of wet season rain fed rice land		100%	100%	100 %	1,782 ha
Percentage of wet season rice land that is irrigated; and for 2008 area in Ha		0 %	0 %	0 %	0 ha
Where	Area irrigated from canal/dam	- %	- %	- %	0 ha
	Area irrigated from river, stream, lake, natural pond	- %	- %	- %	0 ha
	Area irrigated from drilled well	- %	- %	- %	0 ha
	Area irrigated from dug pond	- %	- %	- %	0 ha

2.5.7 Water sources for wet Season Rice Cultivation, by Commune, in 2008

This chart shows the percentage of wet season rice cultivation receiving water from rain (natural) and from irrigation.



2.5.8 Access to Irrigation

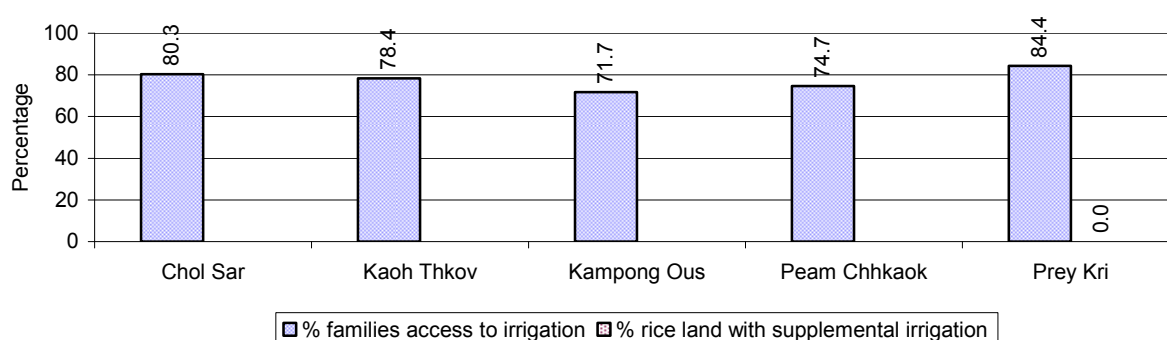
Description	2006 %	2007 %	2008	
			%	Number
Families who have access to irrigation water	67%	73%	79%	4,436 families
Families who have irrigation wells	0%	0%	0%	26 families

Note: Calculated against the total number of families are rice farmers

2.5.9 Number of Irrigation Wells over 3 years

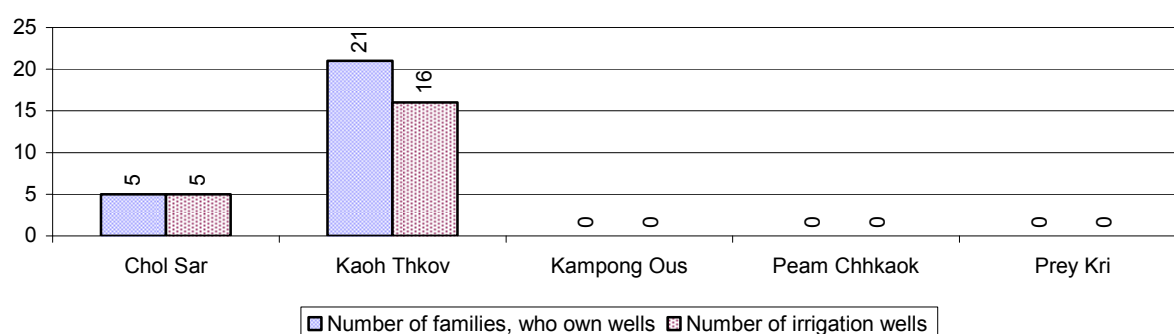
Description	2006	2007	2008
Number of irrigation wells	20 wells	10 wells	21 wells

2.5.10 Percentage of Families with access to (supplemental) Irrigation for wet Season Rice cultivation, by Commune, in 2008



Note: % of families, with access to irrigation is calculated against the total number of families, whose main occupation is rice farming. Irrigated wet rice land area is calculated against the total actual wet rice land cultivated areas

2.5.11 Irrigation Wells, by Commune, in 2008

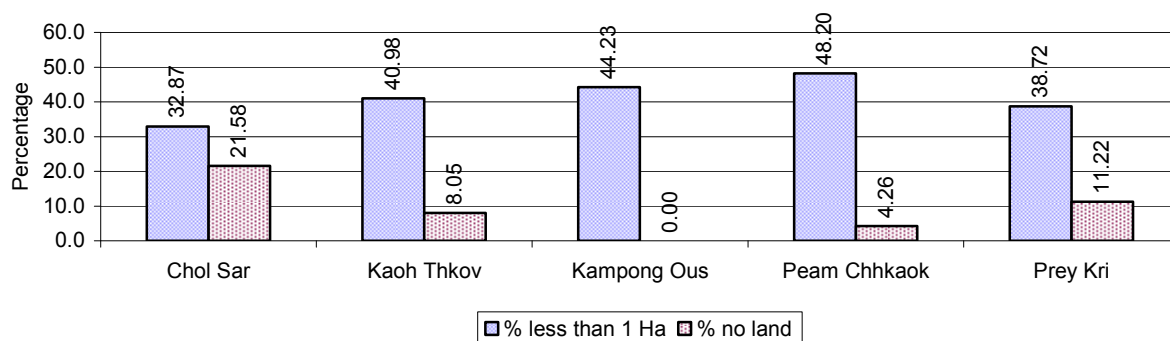


2.5.12 Farmers owning less than one hectare of Rice Land

Description	2006 %	2007 %	2008	
			%	Number
Families who have less than one hectare of rice land	45%	47%	40%	2,239 families
Families who do not own any rice land	7%	6%	10%	569 families

Note: Calculated on basis of total number of families who are rice farming

2.5.13 Percentage of Farmers with less than one Hectare or no Rice Land, by Commune, in 2008

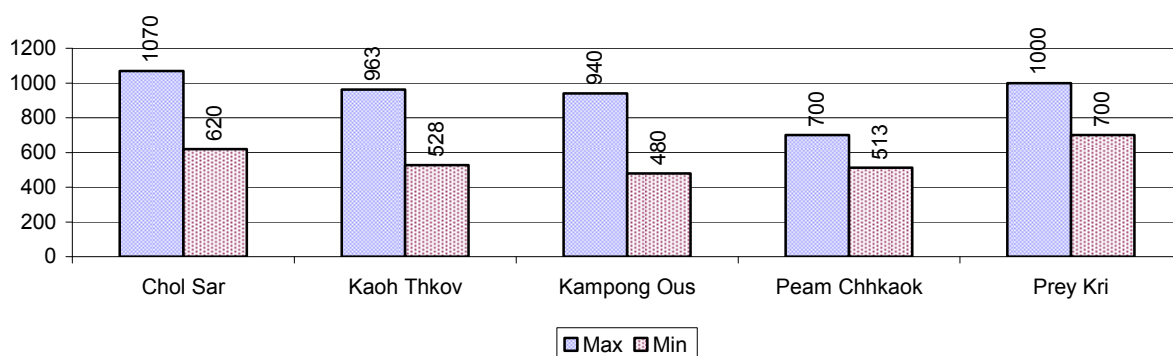


Note: Calculated on basis of total number of families who are rice farming

2.5.14 Average farm-gate Prices of Rice, over 3 years

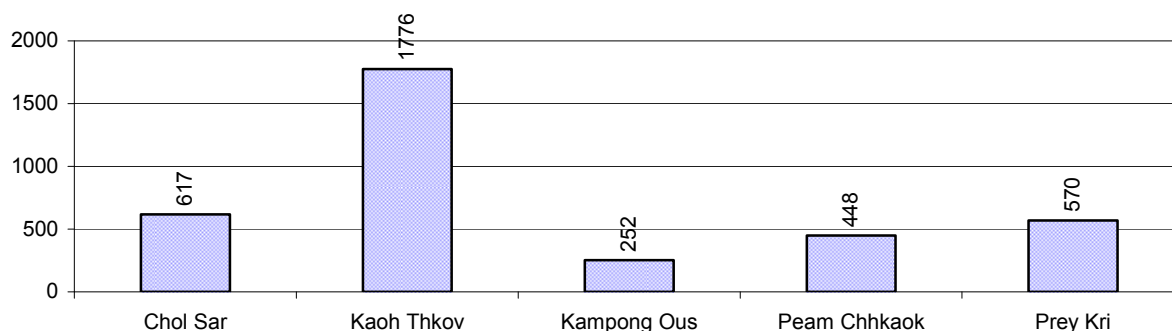
Description	2006	2007	2008
Maximum average farm gate price	559 Riels/Kg	681 Riels/Kg	935 Riels/Kg
Minimum average farm gate price	414 Riels/Kg	433 Riels/Kg	568 Riels/Kg
Average farm gate price	487 Riels/Kg	557 Riels/Kg	751 Riels/Kg
Average rice production per person	651 Kg/person	718 Kg/person	766 Kg/person

2.5.15 Minimum and maximum farm-gate Prices of Rice in Riel/kg, by Commune, in 2008



2.5.16 Production of Paddy in Kgs/Person, by Commune, in 2008

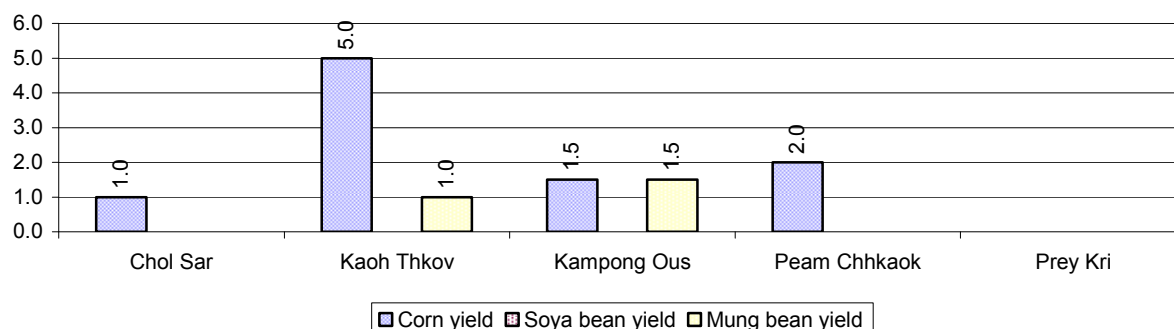
This table shows how much paddy (harvested rice) is produced in a year in a commune, in kgs per person.



2.5.17 Production of other Crops, over 3 years

Crops	2006	2007	2008
Corn cultivation area	1,463 ha	284 ha	272 ha
Estimated corn yield	1.4 tonne(s)/ha	2.4 tonne(s)/ha	2.4 tonne(s)/ha
Estimated corn production	2,048 tonne(s)	674 tonne(s)	646 tonne(s)
Soya bean cultivation area	0 ha	0 ha	0 ha
Estimated Soya bean yield	- tonne(s)/ha	- tonne(s)/ha	- tonne(s)/ha
Estimated Soya bean production	- tonne(s)	- tonne(s)	- tonne(s)
Mungbean cultivation area	52 ha	52 ha	43 ha
Estimated Mungbean yield	0.5 tonne(s)/ha	1.1 tonne(s)/ha	1.3 tonne(s)/ha
Estimated Mungbean production	26 tonne(s)	57 tonne(s)	54 tonne(s)
Peanut cultivation area	0 ha	0 ha	0 ha
Estimated Peanut yield	- tonne(s)/ha	- tonne(s)/ha	- tonne(s)/ha
Estimated Peanut production	- tonne(s)	- tonne(s)	- tonne(s)
Cassava cultivation area	4 ha	4 ha	0 ha
Estimated Cassava yield	1.5 tonne(s)/ha	10.0 tonne(s)/ha	- tonne(s)/ha
Estimated Cassava production	6 tonne(s)	40 tonne(s)	- tonne(s)
Sweet potatoes cultivation area	0 ha	0 ha	0 ha
Estimated Sweet potatoes yield	- tonne(s)/ha	- tonne(s)/ha	- tonne(s)/ha
Estimated Sweet potatoes production	- tonne(s)	- tonne(s)	- tonne(s)
Sesame cultivation area	0 ha	0 ha	0 ha
Estimated Sesame yield	- tonne(s)/ha	- tonne(s)/ha	- tonne(s)/ha
Estimated Sesame production	- tonne(s)	- tonne(s)	- tonne(s)

2.5.18 Yields of Corn, Soya beans and Mungbeans in tonne(s)/ha, by Commune, in 2008



2.5.19 Yields of Peanuts and Cassava in tonne(s)/ha by Commune, in 2008

There were no yields for any of these crops in this District in 2008

2.5.20 Yields of Sweet Potatoes and Sesame in tonne(s)/ha, by Commune, in 2008

There were no yields for any of these crops in this District in 2008

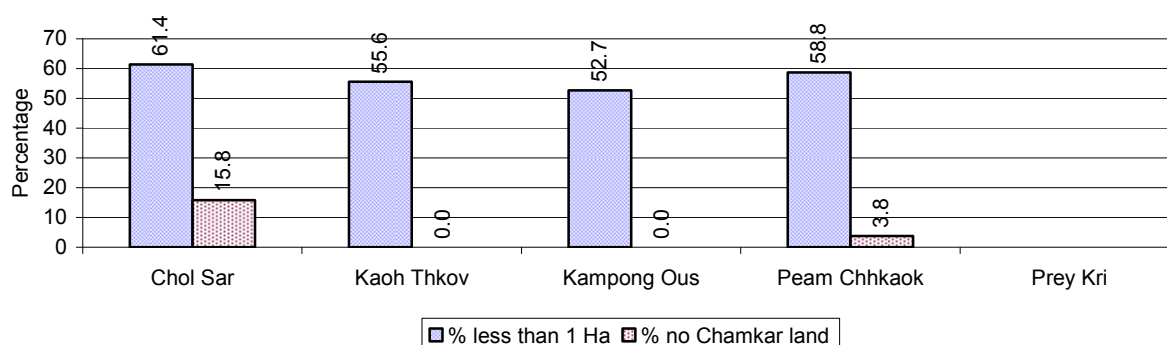
2.5.21 Percentage Farmers who own less than 1 Ha or no Chamkar land

Description	2006 %	2007 %	2008	
			%	Number
Families, who own less than 1ha of Chamkar land	58%	58%	56%	170 families
Families, with no Chamkar land	17%	9%	4%	12 families

Note 1: Calculated as a percentage of the total number of families whose main occupation is Chamkar (not rice) farming

Note 2: Chamkar land is no-rice land, i.e. other crops

2.5.22 Percentage Farmers owning less than 1 ha or no Chamkar land, by Commune, in 2008



Note: Percentage is calculated among families, who Chamkar farm as a main occupation, not the total population of the commune.

2.5.23 Percentage of Families raising Cattle/Buffalo, over 3 years

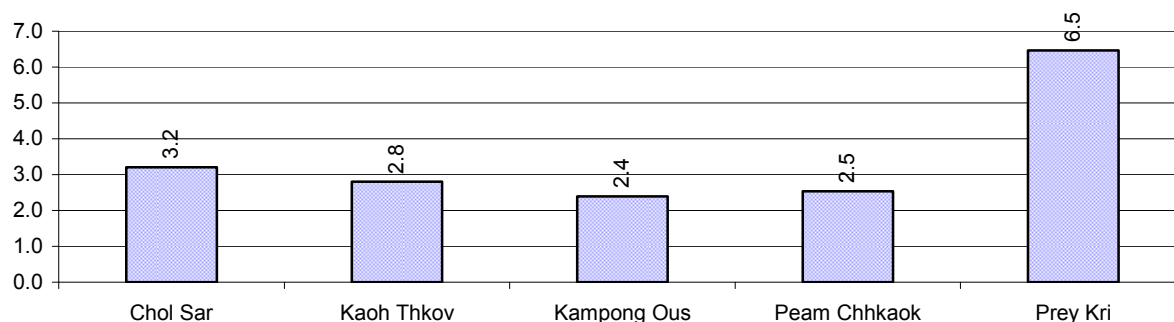
Description	2006 %	2007 %	2008	
			%	Number
Families raising cattle/buffalo	26%	26%	26%	1,690 families
Families raising cattle/buffalo as labor forces	11%	11%	10%	675 families

Note: Calculated against the total number of families.

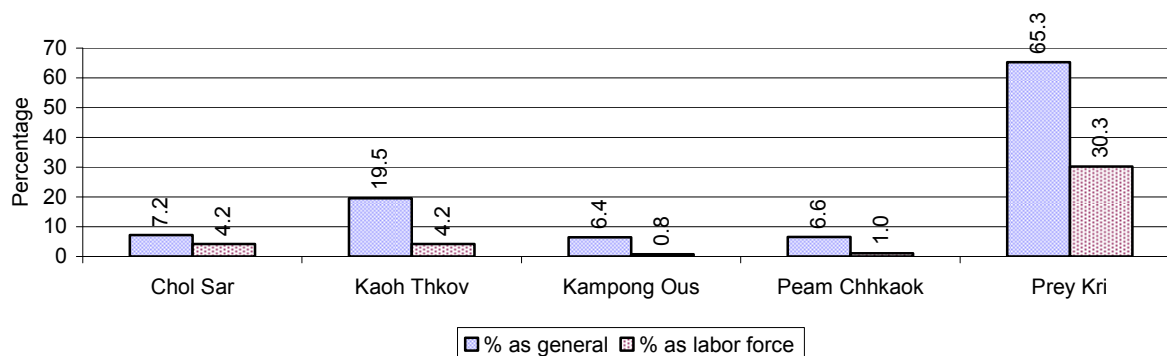
2.5.24 Number of Cattle/buffalo being raised, over 3 years

Description	2006	2007	2008
Total number of cattle/buffalo	8,691 head(s)	8,902 head(s)	8,943 head(s)
Average cattle/buffalo per families	5.5 head(s)/families	5.4 head(s)/families	5 head(s)/families

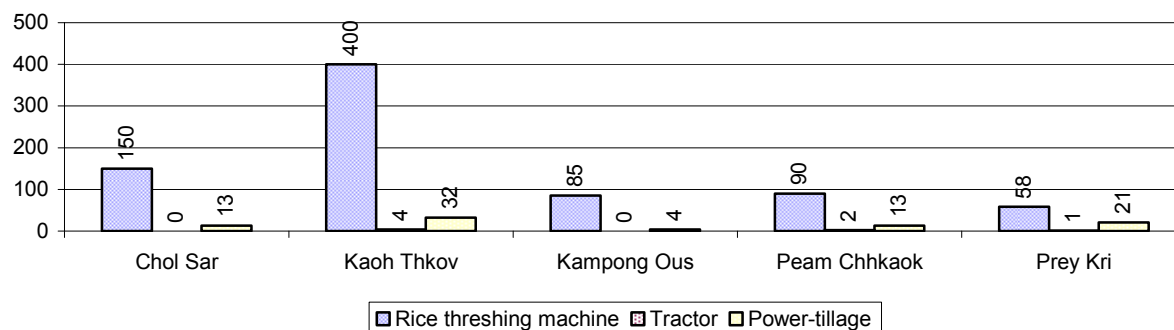
Note: Calculated by dividing total number of cattle/buffalo by total number of cattle/buffalo raising families

2.5.25 Average number of Cattle/Buffalo per Family, by Commune, in 2008

Note: Calculated by dividing total number of cattle/buffalo by total number of cattle/buffalo raising families

2.5.26 Percentage Families raising Cattle/Buffalo, for general and labor purposes in 2008, by Commune

Note: Calculated using the total number of families raising cattle/buffalo against the total number of families.

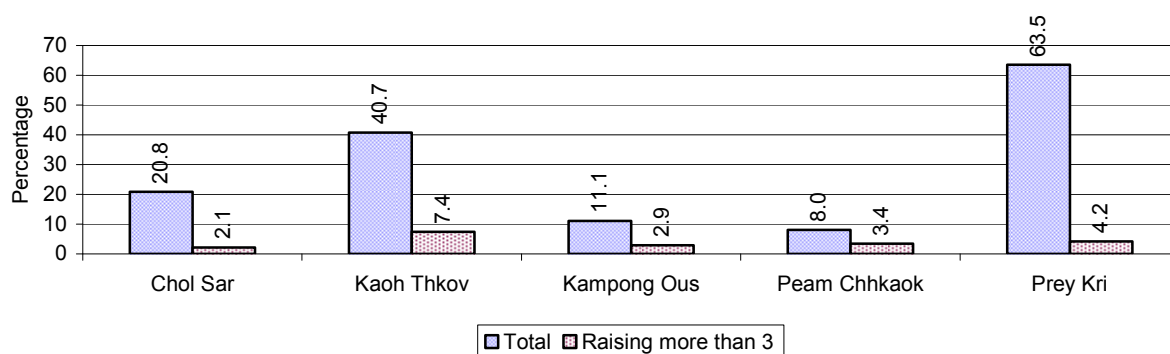
2.5.27 Type and number of agricultural Machines, by Commune, in 2008

2.5.28 Livestock-producing Households over 3 years

Description	2006 %	2007 %	2008	
			%	Number
Total number of families raising pigs	56%	43%	35%	2,250 families
number of families raising more than 3 pigs	6%	6%	4%	283 families
Total number of families raising chickens	85%	81%	79%	5,096 families
number of families raising more than 3 chickens	59%	59%	56%	3,622 families
Total number of families raising ducks	6%	6%	4%	288 families
number of families raising more than 5 ducks	2%	3%	3%	183 families
Total number of families raising goats or sheep	0%	0%	0%	17 families
Total number of families raising horses	2%	2%	3%	210 families

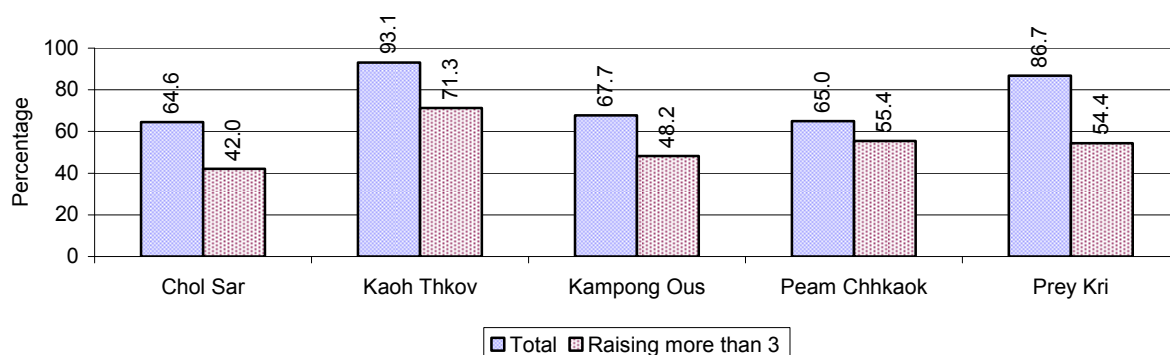
Note: Calculated against the total number of families

2.5.29 Percentage Families raising Pigs, by Commune, in 2008



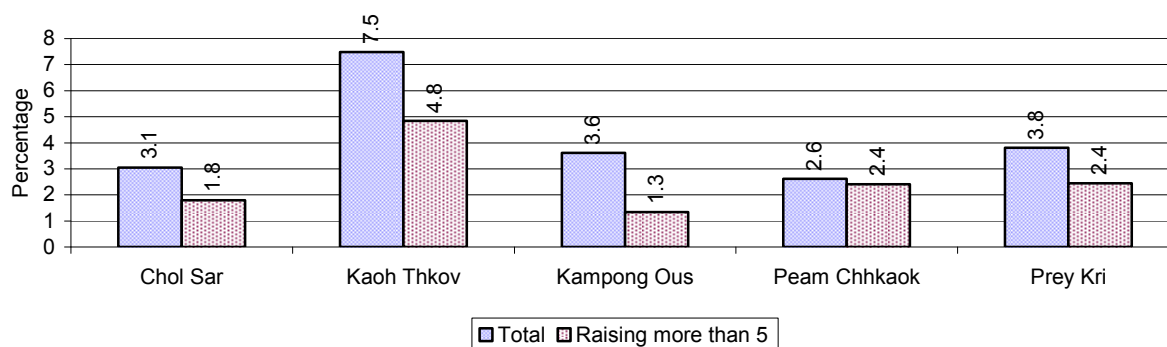
Note: Calculated against the total number of families in the commune

2.5.30 Percentage Families raising Chickens, by Commune, in 2008



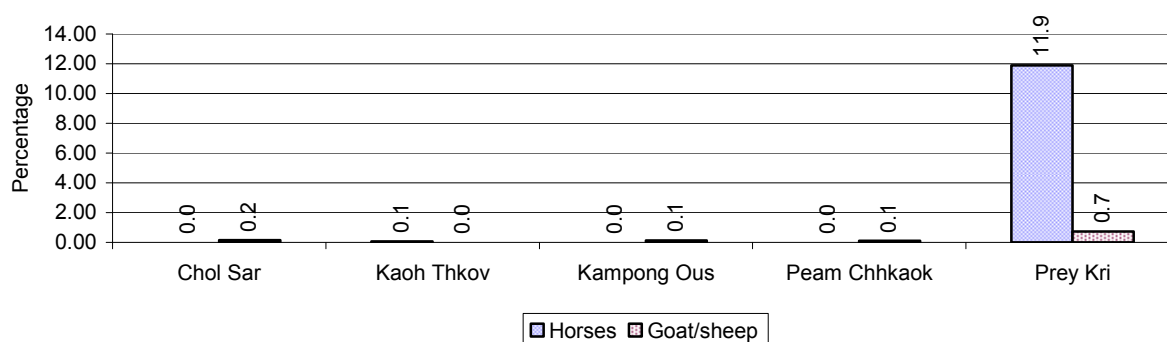
Note: Calculated against the total number of families in the commune

2.5.31 Percentage Families raising Ducks, by Commune, in 2008



Note: Calculated against the total number of families in the commune

2.5.32 Percentage Families raising Horses, Goats or Sheep, by Commune, in 2008



Note: Calculated against the total number of families in the commune

2.5.33 Livestock Farms over 3 years

Description	2006	2007	2008
Number of cattle/buffalo farms	4 farm(s)	0 farm(s)	0 farm(s)
Number of pig farms	0 farm(s)	0 farm(s)	0 farm(s)
Number of goat/sheep farms	0 farm(s)	2 farm(s)	0 farm(s)
Number of chicken farms	0 farm(s)	0 farm(s)	0 farm(s)
Number of duck farms	1 farm(s)	0 farm(s)	0 farm(s)

2.5.34 Number Livestock Farms, by Commune in 2008

There were no farms of this type in this District in 2008

Note: Number of farms are recorded by the village chief, not by counting number of livestock in each farm

2.5.35 Number Chicken and Duck Farms, by Commune, for 2008

There were no farms of this type in this District in 2008

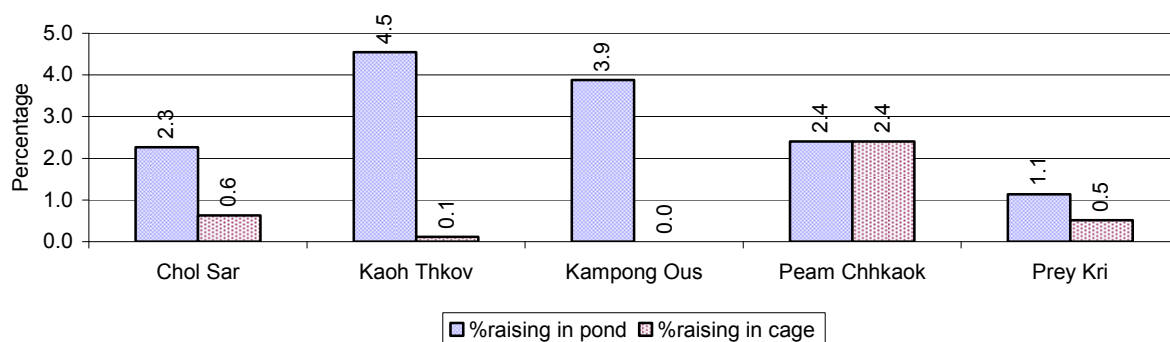
Note: Number of farm places recorded by village chief, not by counting number of livestock in each farm

2.5.36 Families raising Fish over 3 years

Description	2006	2007	2008
Total number of families raising fish	206 families	169 families	222 families
% families raising fish	3%	3%	3%
Number families raising fish in pond	150 families	126 families	180 families
% families raising fish in pond	2%	2 %	3%
Number fish pond	167 pond(s)	167 pond(s)	195 pond(s)
No. of ponds per family	1.1 pond/families	1.3 pond/families	1.1 pond/families
Number of families raising fish in cage	56 families	43 families	42 families
%families raising fish in cage	1 %	1 %	1%
Number of fish cage	56 cage(s)	44 cage(s)	49 cage(s)
No. of fish cage per family	1.0 cage /families	1.0 cage /families	1.2 cage /families

Note: % of families raising fish or fish in ponds or cages is calculated a percentage of the total number of families.

2.5.37 Percentage of Families raising Fish, by Commune, in 2008



Note: Calculated as a percentage of the total number of families in the commune.

2.5.38 Shrimp and Prawn Farming over 3 years

Description	2006	2007	2008
Number of families raising shrimps	0 families	0 families	0 families
% Families raising shrimps	0%	0%	0%
Number of shrimp ponds	0 pond	0 pond	0 pond
Total area raising shrimps	0 ha	0 ha	0 ha
Area per family	-ha/families	-ha/families	-ha/families
Number of families raising prawns	0 families	0 families	0 families
% families raising prawns	0%	0%	0%
Number prawn ponds	0 pond	0 pond	0 pond
Ponds per families	- pond/families	-pond/families	-pond/families
Number of prawn cages	0 cage	0 cage	0 cage
Cages per families	0 cage /families	0 cage /families	0 cage /families

Note: Percentage of families raising either prawns or shrimp is calculated against the number of families, who do aquaculture farming, NOT the total population.

2.5.39 Numbers of Families raising Shrimps and number of Shrimp Ponds, by Commune, in 2008

There were none of these in this District in 2008

2.5.40 Number of Families raising Prawn and Number of Prawn Ponds/Cages, by Commune, in 2008

There were none of these in this District in 2008

3 Social Aspects

3.1 Education

3.1.1 Kindergarten in the District over 3 years

Description	2006	2007	2008
Number of community kindergarten schools	0 school(s)	0 school(s)	0 school(s)
Number of community kindergarten class rooms	0 room(s)	0 room(s)	0 room(s)
Number of community kindergarten classes	0 class(es)	0 class(es)	0 class(es)
Number of community kindergarten teachers	0 person(s)	0 person(s)	0 person(s)
Number of women community kindergarten teachers	0 women	0 women	0 women
Number of state and private kindergarten schools	2 school(s)	0 school(s)	1 school(s)
Number of state and private kindergarten class rooms	2 room(s)	0 room(s)	2 room(s)
Number of state and private kindergarten classes	2 class(es)	0 class(es)	2 class(es)
Number of state and private kindergarten teachers	2 person(s)	2 person(s)	2 person(s)
Number of women state and private kindergarten teachers	2 women	2 women	2 women

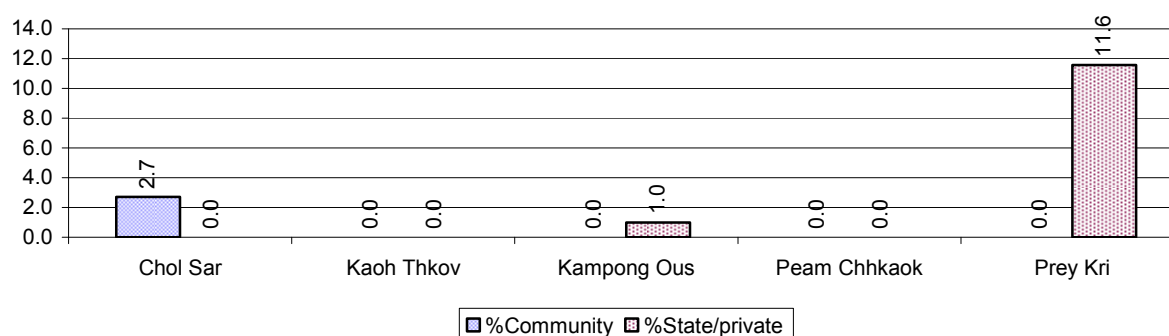
3.1.2 Percentage enrolment at Kindergarten level over 3 years

This table shows the percentage of the total 3-5 year old population attending kindergarten.

Description	2006 %	2007 %	2008	
			%	Number
Total percentage of children, 3-5 yrs, go to kindergarten	4%	3%	4%	120 person(s)
Percentage of children, 3-5 yrs, go community kindergarten	0%	0%	0%	14 person(s)
Percentage children, 3-5 yrs, go state/private kindergarten	4%	3%	4%	106 person(s)

Note: Calculated against the total for that age group

3.1.3 Percentage of Children 3-5 yrs attending Kindergarten, by Commune, in 2008



3.1.4 Basic Education over 3 years

Primary School

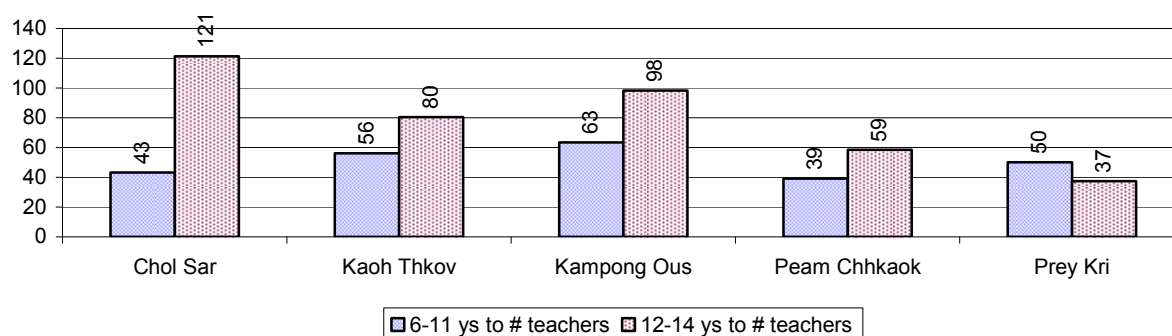
Description	2006	2007	2008
Number of primary schools	26 school(s)	20 school(s)	28 school(s)
Number of primary school rooms	96 room(s)	95 room(s)	121 room(s)
Number of primary classes	163 class(es)	123 class(es)	170 class(es)
Number of primary teachers	104 person(s)	86 person(s)	109 person(s)
Ratio of children 6-11 yrs to school	230	271	191
Ratio of children 6-11 yrs to school room	62	57	44
Ratio of children 6-11 yrs to class	37	44	32
Ratio of children 6-11 yrs to teacher	57	63	49

Note: According to education norm, children 6-11 yrs should attend primary school, while 12-14 yrs should be in lower secondary school, but in reality this varies.

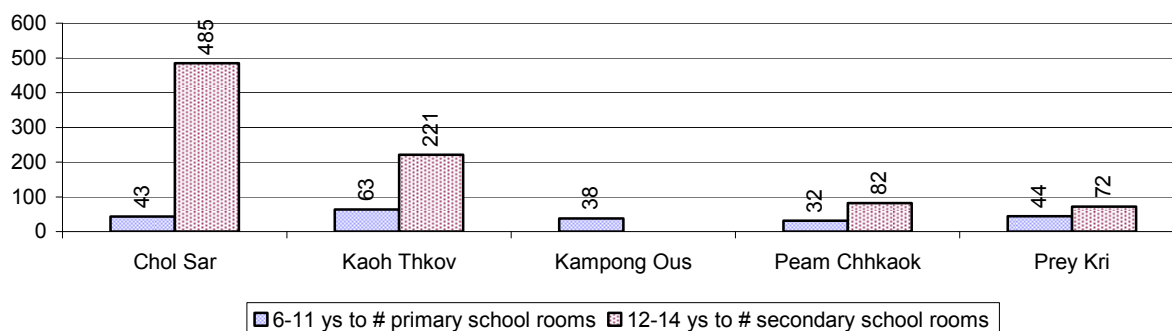
Lower Secondary School

Description	2006	2007	2008
Number of lower secondary schools	3 school(s)	4 school(s)	4 school(s)
Number of lower secondary school rooms	35 room(s)	26 room(s)	22 room(s)
Number of lower secondary classes	20 class(es)	20 class(es)	21 class(es)
Number of lower secondary teachers	26 person(s)	35 person(s)	48 person(s)
Ratio children 12-14 yrs to school	1,018	724	734
Ratio of children 12-14 yrs to school room	87	111	133
Ratio of children 12-14 yrs to class	153	145	140
Ratio of children 12-14 yrs to teacher	117	83	61

3.1.5 Ratio of 6-11 year old and 12-14 year old Children to number of Teachers, by Commune, in 2008



3.1.6 Ratio of 6-11 year old and 12-14 year old Children to number of School Rooms, by Commune, in 2008



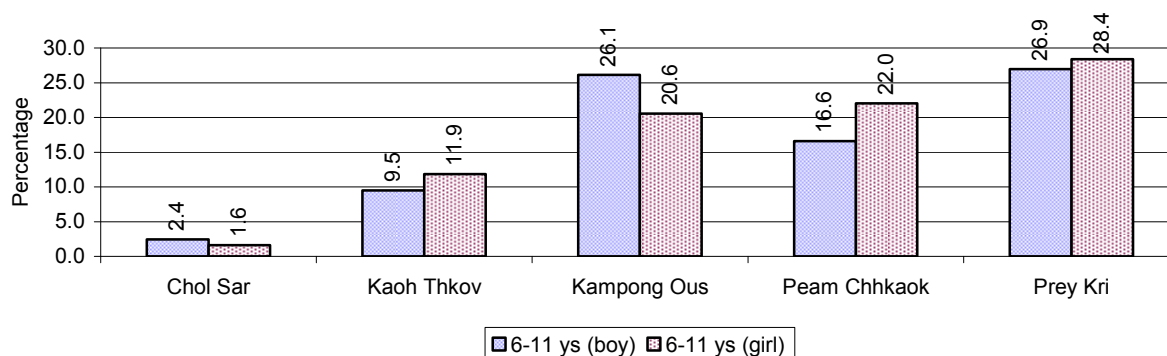
3.1.7 Enrolment status at Primary Level over 3 years

Description	2006 %	2007 %	2008	
			%	Number
Total children aged 6-11 years old	17%	16%	16%	5,356 person(s)
Total children aged 6-11 who are in school	83%	82%	84%	4,480 person(s)
Total children aged 6-11 who are not in school	17%	18%	16%	876 person(s)
Total girls aged 6-11 years old	17%	16%	15%	2,713 person(s)
Total girls aged 6-11 who are in school	84%	82%	83%	2,258 person(s)
Total girls aged 6-11 who are not in school	16%	18%	17%	455 person(s)
Total boys aged 6-11 years old	17%	16%	16%	2,643 person(s)
Total boys aged 6-11 who are in school	83%	83%	84%	2,222 person(s)
Total boys aged 6-11 who are not in school	17%	17%	16%	421 person(s)

Note 1: Percentage is calculated on the basis of the total number of children within 6-11 year age group for the first 3 rows and for the total girls and the total boys aged 6-11 yrs.

Note 2: Number of girls aged 6-11 who are in & not in school is calculated against the total number of girls aged 6-11 yrs. Number boys, 6-11 yrs who are in & not in school are calculated against the total number of boys aged 6-11 yrs.

3.1.8 Percentage of 6-11 year old Children not in School, by Commune, in 2008



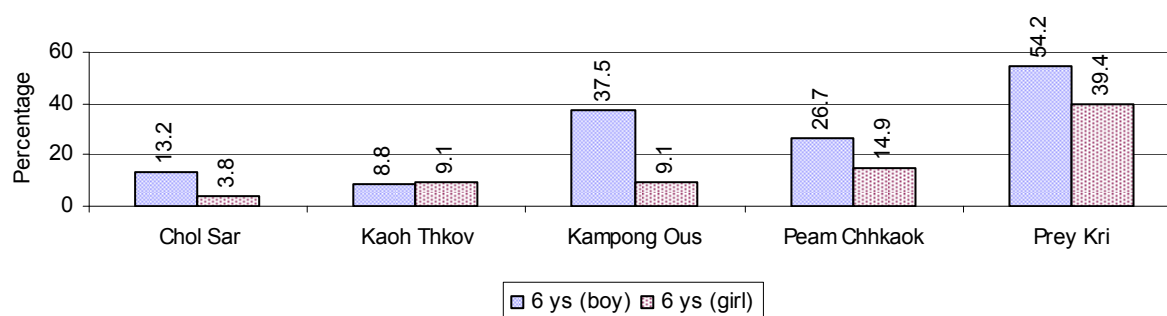
Note: calculated on the basis of the total number of children within 6-11 year age group in the commune.

3.1.9 Enrolment of 6 year old Children over 3 years

Description	2006 %	2007 %	2008	
			%	Number
Total % and number of children aged 6 years old	4%	3%	4%	1,271 person(s)
Total % of children aged 6 years old in school	75%	80%	71%	897 person(s)
Total % of children aged 6 years old not in school	25%	20%	29%	374 person(s)

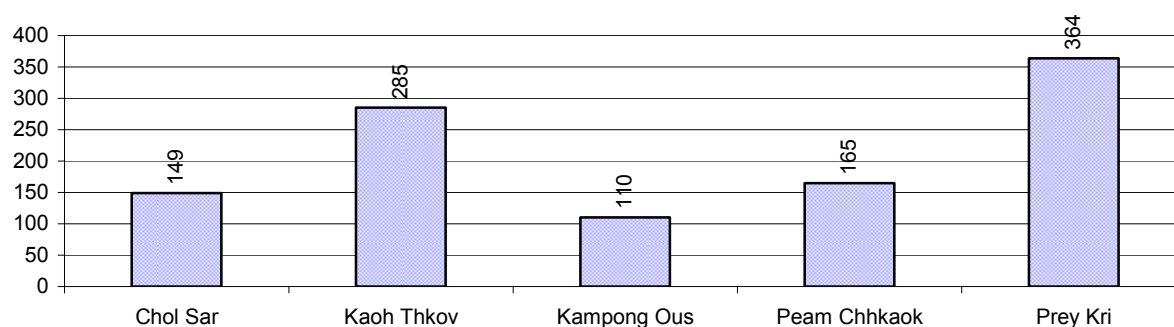
Note: First row calculated as a percentage of total population. Second and third row calculated as a percentage of the total number of 6 year olds.

3.1.10 Percentage of 6 year old Children not in School, by Commune, in 2008



Note: Calculated as a percentage of total 6 year old population

3.1.11 Number of 5 year old Children in each Commune in 2008

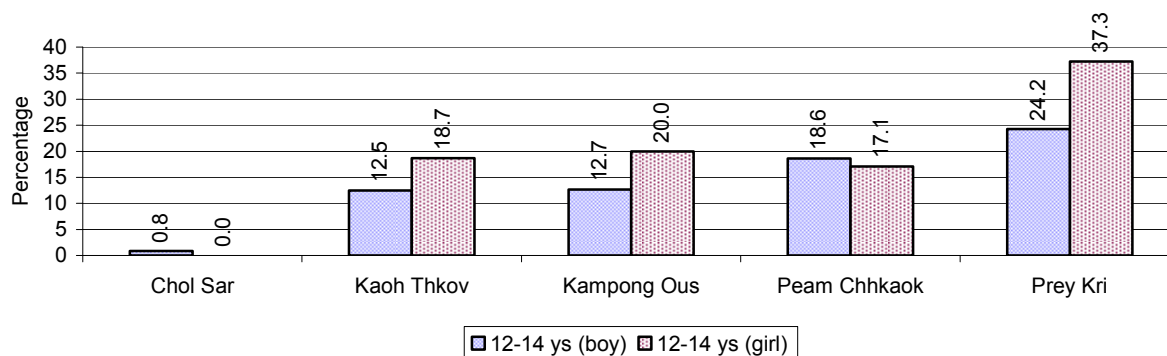


3.1.12 Enrolment at Lower Secondary Level over 3 years

Description	2006 %	2007 %	2008	
			%	Number
Total children aged 12-14 years old	9%	9%	9%	2,936 person(s)
Children aged 12-14 years old in school	65%	80%	82%	2,416 person(s)
Children aged 12-14 years old not in school	35%	20%	18%	520 person(s)
Total girls aged 12-14 years old	8%	8%	8%	1,412 person(s)
Girls aged 12-14 years old in school	71%	83%	79%	1,121 person(s)
Girls aged 12-14 years old not in school	29%	17%	21%	291 person(s)
Total boys aged 12-14 years old	9%	9%	9%	1,524 person(s)
Boys aged 12-14 years old in school	60%	78%	85%	1,295 person(s)
Boys aged 12-14 years old not in school	40%	22%	15%	229 person(s)

Note: Percentage is calculated on the basis of number of the total number of children within 12-14 yrs group, except for the first row of each section which is calculated on the basis of the total population.

3.1.13 Percentage of 12-14 year olds not in School, by Commune, in 2008



Note: Calculated as a percentage of the total 12-14 year old population in each commune

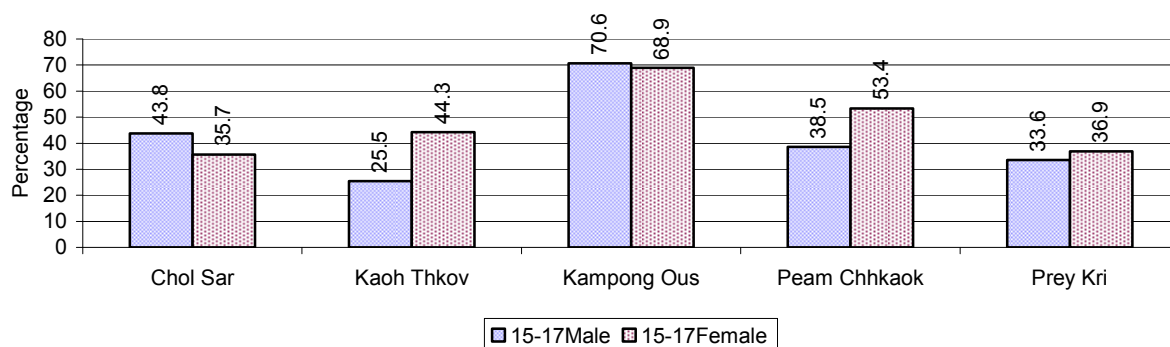
3.1.14 Upper Secondary Schools over 3 years

Description	2006	2007	2008
Number of upper secondary schools	0 school(s)	0 school(s)	1 school(s)
Number of upper secondary school rooms	0 room(s)	0 room(s)	3 room(s)
Number of upper secondary classes	0 class(es)	0 class(es)	3 class(es)
Number of upper secondary teachers	0 person(s)	1 person(s)	1 person(s)
Ratio of 15-17 yr olds to number of school	N/A	N/A	2,680
Ratio of 15-17 yr olds to number of school room	N/A	N/A	893
Ratio of 15-17 yr olds to number of classes	N/A	N/A	893
Ratio of 15-17 yr olds to number of teacher	N/A	2,578	2,680

3.1.15 Enrolment of 15-17 year old teenagers over 3 years

Description	2006	2007	2008
Number of teenage, 15-17 years old	2,616 person(s)	2,578 person(s)	2,680 person(s)
Number of teenage, 15-17 years old, who are not studying	1,429 person(s)	1,033 person(s)	1,096 person(s)
Percentage of teenage, 15-17 years old not studying	55%	40%	41%

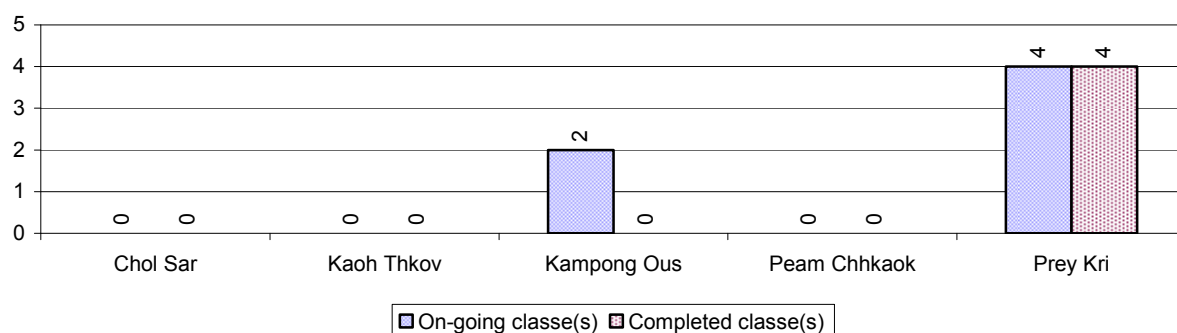
3.1.16 Percentage of 15-17 year old Teenagers not at School, by Commune, in 2008



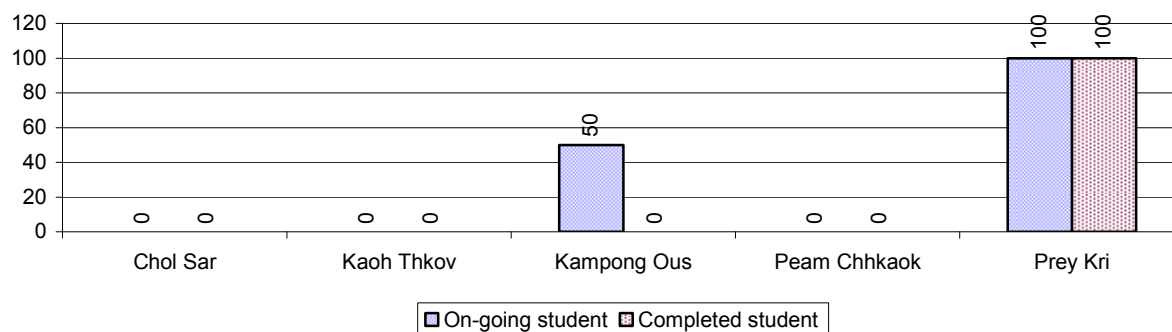
3.1.17 Literacy Classes as of 2008

Literacy classes	Organized by:		Other Program(s)	Total
	PDoEYS	NGOs		
Number of On-going literacy classes	6 class(es)	0 class(es)	0 class(es)	6 class(es)
Number of literacy students in on-going classes	150 person(s)	0 person(s)	0 person(s)	150 person(s)
Completed literacy class(es)	4 classes	0 classes	0 classes	4 classes
Number of literacy students that have completed literacy classes	100 person(s)	0 person(s)	0 person(s)	100 person(s)
Number of students that passed	76 person(s)	0 person(s)	0 person(s)	76 person(s)

3.1.18 Number of on-going and completed Literacy Classes, by Commune, in 2008



3.1.19 Students of on-going & completed Literacy Classes, by Commune, in 2008

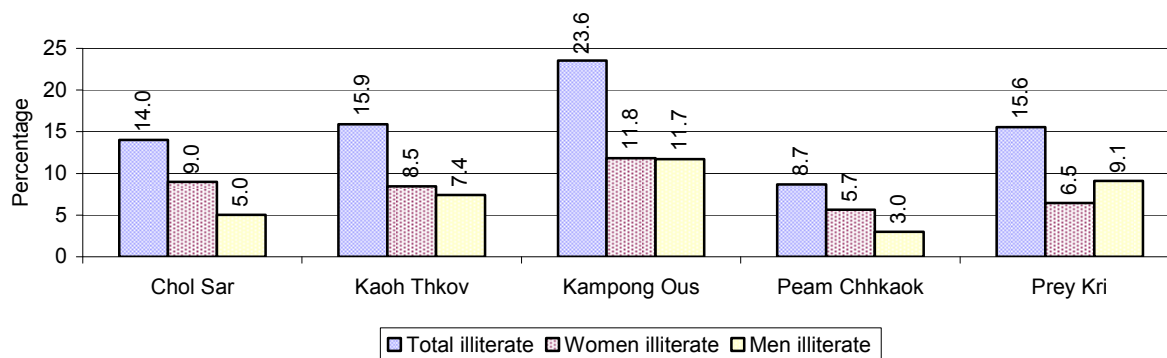


3.1.20 Percentage of illiterate People between 15-60, over 3 years

Illiteracy Status	2006 %	2007 %	2008	
			%	Number
Illiterate people, 15-60 years old	28%	18%	15%	2,864 person(s)
Illiterate females, 15-60 years old	13%	10%	8%	1,496 person(s)
Illiterate people, 15-17 years old	22%	13%	12%	316 person(s)
Illiterate females, 15-17 years old	10%	6%	6%	158 person(s)
Illiterate people, 18-24 years old	25%	15%	10%	492 person(s)
Illiterate females, 18-24 years old	10%	9%	6%	280 person(s)
Illiterate people, 25-60 years old	31%	21%	18%	2,056 person(s)
Illiterate females, 25-60 years old	16%	12%	9%	1,058 person(s)

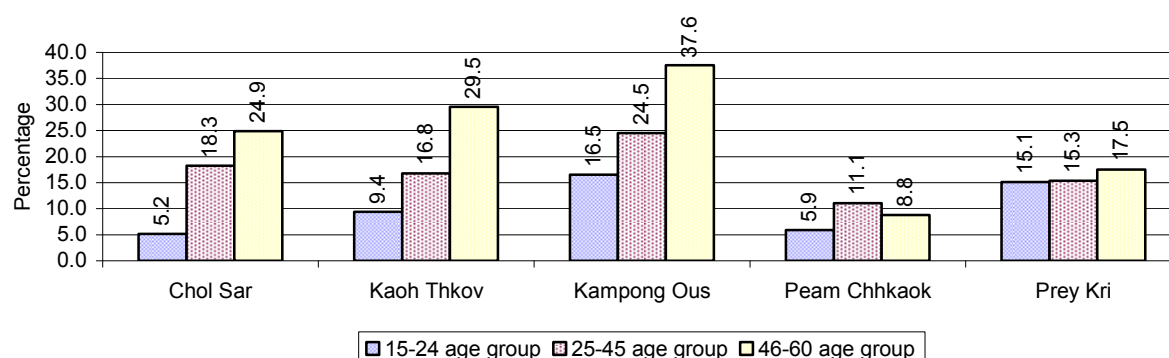
Note: Percentage is calculated on the basis of number of people in age each group.

3.1.21 Percentage illiterate People among 15-60 yrs old, by Commune, in 2008



Note: Percentages are calculated on the basis of number of people in that age group.

3.1.22 Percentage illiterate People for 15-24 yrs, 25-45 yrs and 46-60 yrs, by Commune, in 2008



Note: Percentage of illiterate people in each age group is calculated on the basis of number of people in that age group.

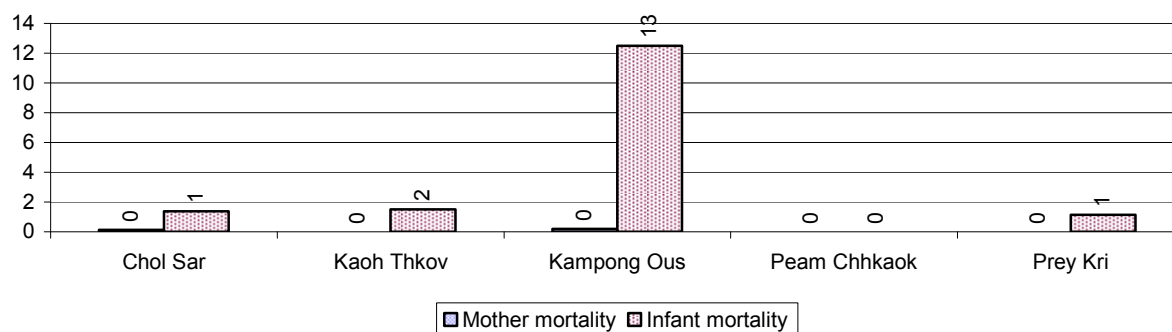
3.2 Health

3.2.1 Health Situation of Women and Children, over 3 years

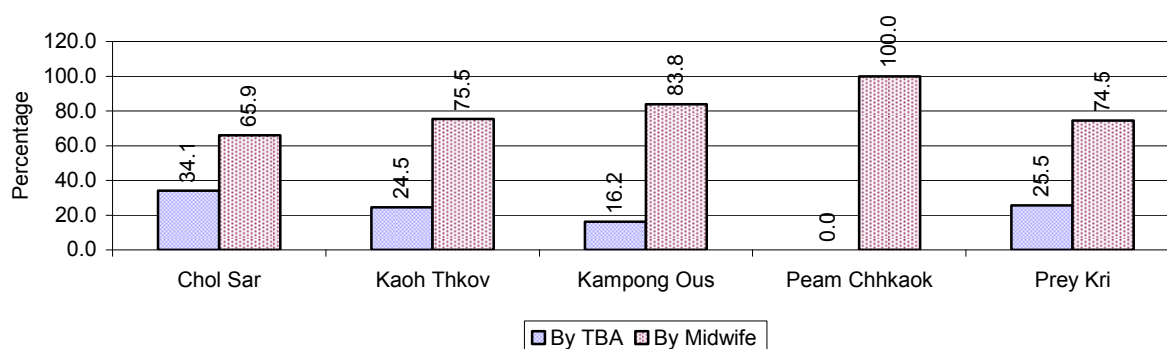
Description	2006	2007	2008
Number families with a birth during the year	663 families	686 families	568 families
Number of women who had their baby delivered by a TBA	439 person(s)	291 person(s)	134 person(s)
Percentage of women who had their baby delivered by a TBA	66 %	42 %	24 %
Number of women who had their baby delivered by a midwife	224 person(s)	395 person(s)	434 person(s)
Percentage of women had their baby delivered by a midwife	34 %	58 %	76 %
Number of mothers who died within 1 month of giving birth	0 person(s)	0 person(s)	2 person(s)
Mothers who died within 1 month of giving birth per 100,000 families having a delivery	0	0	352
Number of infants born during the year	663 person(s)	686 person(s)	568 person(s)
Number of Infants who died within 1 month	14 person(s)	21 person(s)	9 person(s)
Infants mortality within 1 month per 1,000 births	21	31	16
Number of children who died below the age of 5.	27 person(s)	23 person(s)	10 person(s)
Number of infants, aged 9-12 months, born during the year	439 person(s)	441 person(s)	388 person(s)
Nr. infants, aged 9-12 months, not receiving full immunization	38 person(s)	8 person(s)	16 person(s)
% of 9-12 months infants, not receiving full immunization	9 %	2 %	4 %

Note: TBA = Traditional Birth Attendant

3.2.2 Mothers dying within 0 days to 1 month of giving Birth and Infants dying within 1 month in 2008, by Commune

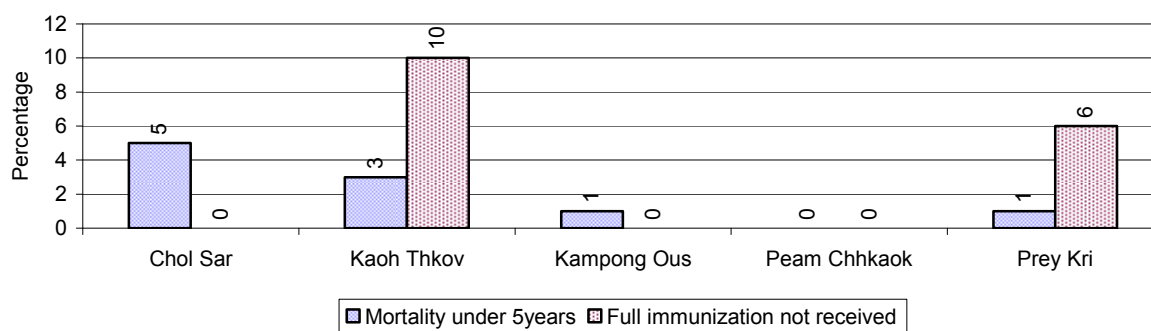


3.2.3 Percentage of Women delivering with a TBA or Midwife, by Commune



Note: Calculated as a percentage of total deliveries

3.2.4 Percentage of Children dying below 5 & of 9-12 months not receiving full Immunization, by Commune, in 2008



Note: Mortality rate calculated as a percentage of the total 5 year old population. Lack of immunization received calculated as a percentage of the total number 9-12 months olds there are

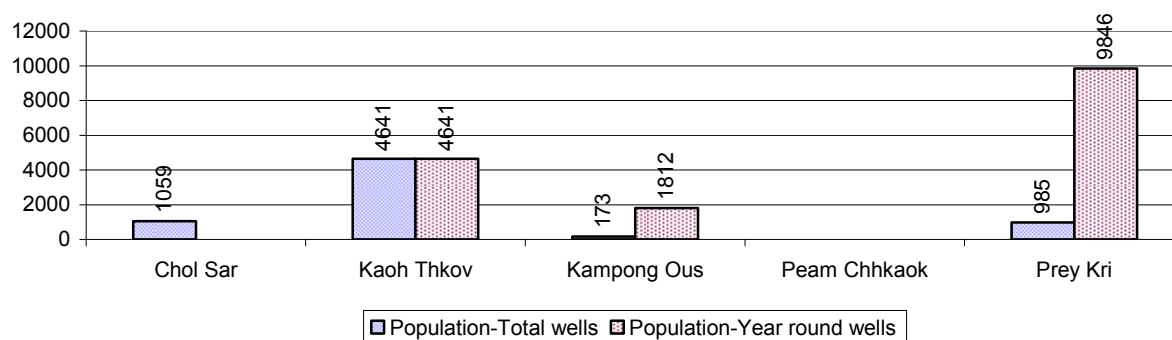
3.3 Water and Sanitation

3.3.1 Number of different types of Wells over 3 years

Type of wells	Number of wells by year		
	2006	2007	2008
Total number of pumped or mixed wells	15	14	28
Year-round usable pumped or mixed wells	0	0	3
Dry season unusable pump or mixed wells	15	14	25

Type of wells	Number of wells by year		
	2006	2007	2008
Pump or mixed wells needing repair/rehabilitation	1	7	17
<i>Total number of ring wells</i>	6	7	11
Year-round usable ring wells	1	1	2
Dry season unusable ring wells	5	6	9
Ring wells needing repair/rehabilitation	5	5	1
<i>Total number of unprotected dug wells</i>	0	0	0
Year-round usable unprotected dug wells	0	0	0
Dry season unusable unprotected dug wells	0	0	0

3.3.2 Ratio of People to Wells, by Commune, in 2008

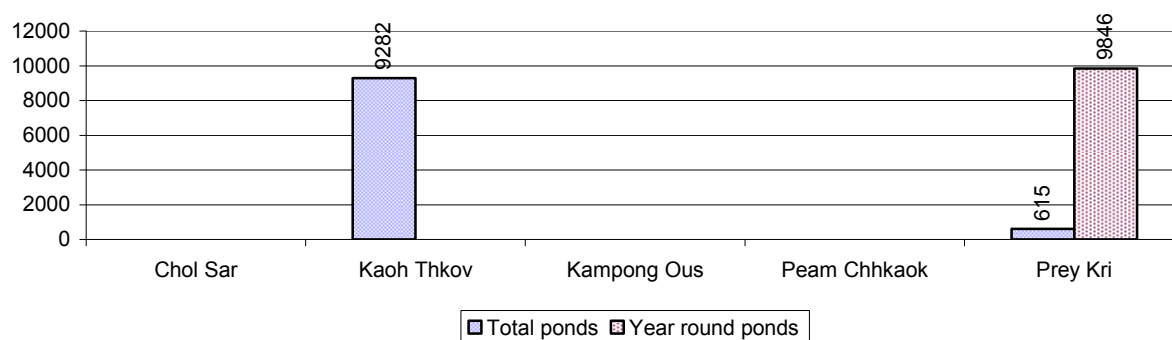


Note: Year-round wells excluding unprotected wells

3.3.3 Potable Ponds over 3 years

Type of Pond	2006	2007	2008
<i>Total number of normal-type ponds</i>	16 pond	15 pond	17 pond
Year-round usable normal-type ponds	1 pond	1 pond	1 pond
Dry season unusable normal-type ponds	15 pond	14 pond	16 pond
Normal-type ponds needing repair/rehabilitation	12 pond	11 pond	13 pond
<i>Total number of filter ponds</i>	0 pond	0 pond	0 pond
Year-round usable filter ponds	0 pond	0 pond	0 pond
Filter ponds, dry season unusable	0 pond	0 pond	0 pond
Filter ponds needing repair/rehabilitate	0 pond	0 pond	0 pond

3.3.4 Ratio of People to normal Ponds, by Commune in 2008



3.3.5 Ratio of People to Filter Ponds, by Commune, in 2008

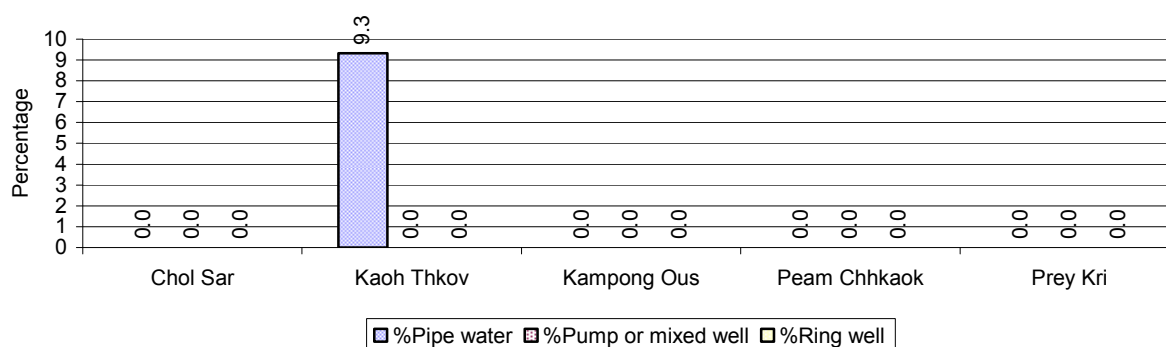
There were no filter ponds in this District in 2008

3.3.6 Source of potable Water for Households, over 3 years

Water sources	2006 %	2007 %	2008	
			%	Number
Families using water from purification system	0%	4 %	3 %	162 families
Families using water from pump, mixed wells	1%	0 %	0 %	0 families
Families using water from ring wells and open dug wells	3%	2 %	0 %	0 families
Families using water from pond	4%	9 %	13 %	811 families
Families using water from rain water storage	10%	4 %	0 %	0 families
Families using water from rivers, lakes, natural ponds and reservoirs	82%	80 %	85 %	5,504 families

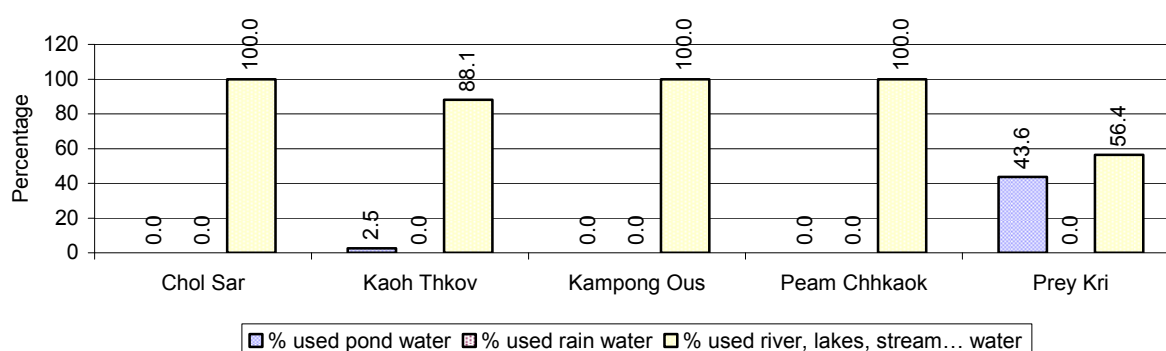
Note: Calculated as a percentage of the total number of families.

3.3.7 Percentage Families using different Water Sources, by Commune, in 2008



Note: Calculated as a percentage of the total number of families in each commune

3.3.8 Percentage Families using Water from Rain Water Storage, Ponds and natural Sources (rivers/lakes/natural ponds/reservoirs), by Commune, 2008



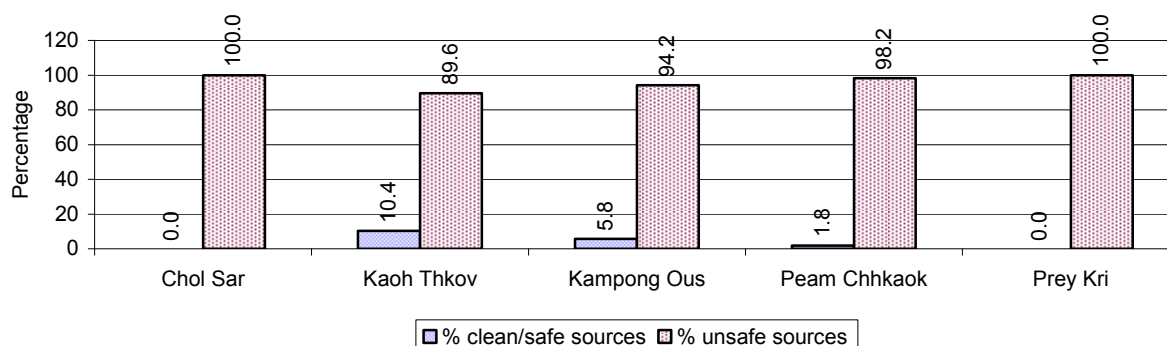
Note: Calculated as a percentage of the total number of families in each commune

3.3.9 Drinking Water Sources in the dry Season over 3 years

Percentage Families that get drinking water from:	2006 %	2007 %	2008	
			%	Number
from clean/safe sources	1 %	4 %	4 %	240 families
from unsafe sources	99 %	96 %	96 %	6,237 families

Note: Calculated as a percentage of the total number of families.

3.3.10 Percentage Families using safe and unsafe Water Sources in the dry Season, by Commune, in 2008



Note: Calculated as a percentage of the total number of families in each commune.

3.3.11 Drinking Water Purification by Households, over 3 years

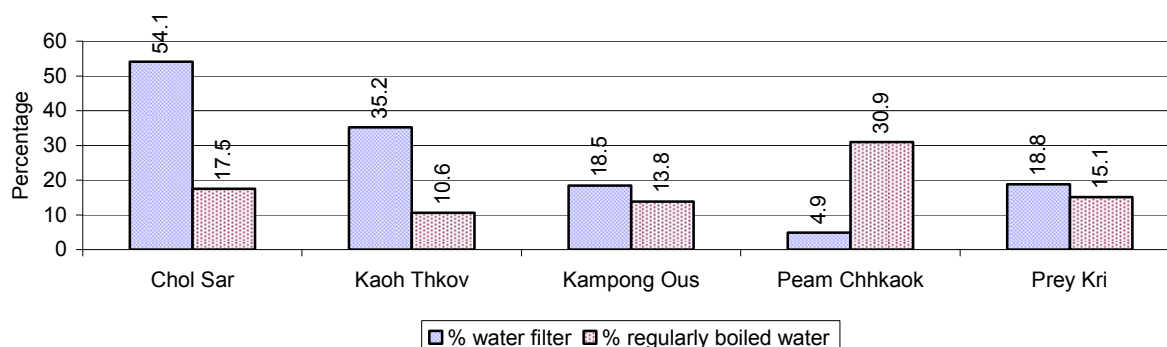
This table shows the different ways families make water safe for drinking.

Families, who:	2006	2007	2008	
	%	%	%	Number
Filter water for drinking	3%	14%	28 %	1,820 families
Boil water for drinking	14%	11%	17 %	1,073 families

Note: Calculated as a percentage of the total number of families

3.3.12 Percentage Families filtering Water or regularly boiling Water, by Commune, in 2008

This graph shows the different ways families make drinking water safe.



Note: Calculated on as a percentage of the total number of families in each commune.

3.3.13 Families' access to Water, over 3 years

Families access to water	2006	2007	2008	
	%	%	%	Number
Families with water at home or in less then 150m	43%	4%	71 %	4,591 families
Families with water 150m or more away from home	3%	0%	5 %	323 families

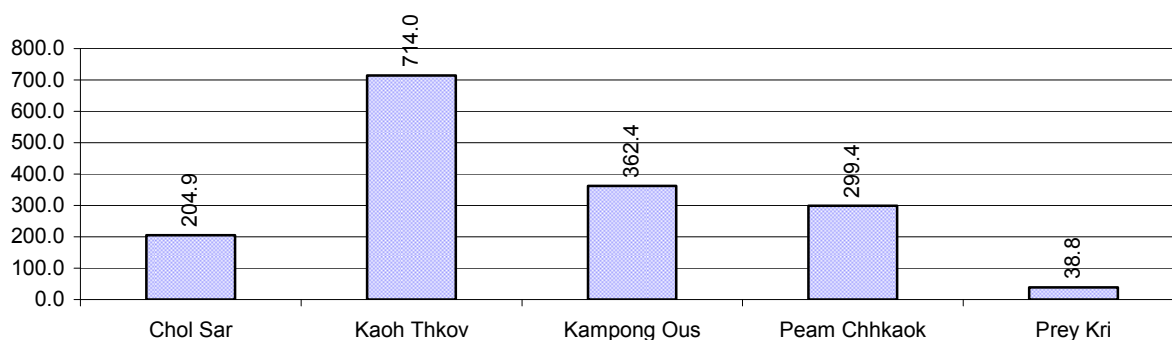
Note: Calculated as a percentage of the total number of families

3.3.14 Ratio of people to Latrines over 3 years

Description	2006	2007	2008	
	Ratio	Ratio	Ratio	Number
Ratio of people to latrines	160.0	144.7	105.2	325.0

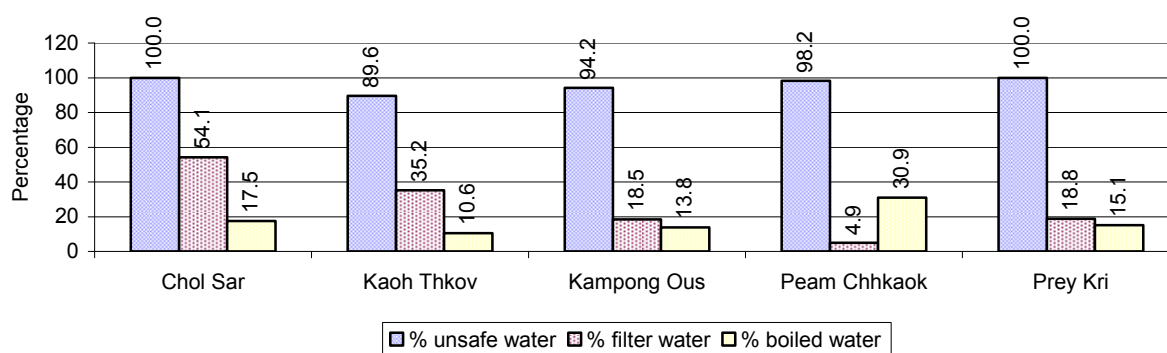
Note: Ratio calculated by dividing the number of houses with latrines by the total population

3.3.15 Ratio of People to Latrines, by Commune, in 2008



Note: Ratio calculated by dividing the number of houses with latrines by the total population in a Commune.

3.3.16 Percentage of Families drinking boiled, filtered or unsafe Water, by Commune, in 2008



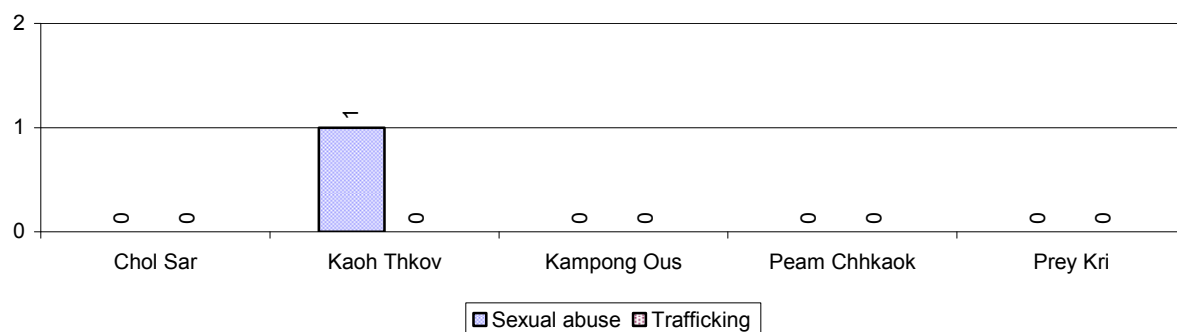
Note: Calculated as a percentage of the total number of families in each commune.

3.4 Vulnerable groups

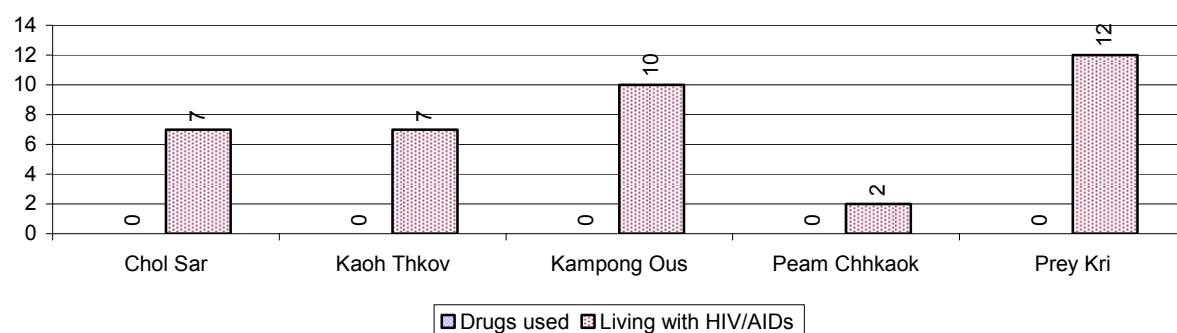
3.4.1 Vulnerable Groups in need of special Protection over 3 years

Vulnerable groups	2006	2007	2008
Victims of sexual abuse	1 person(s)	0 person(s)	1 person(s)
Victims of human trafficking	0 person(s)	0 person(s)	0 person(s)
Families with family member(s) using drugs	0 families	1 families	0 families
Families with family member(s) living with HIV/AIDS	13 families	32 families	38 families
Children under 18 yrs old whose parent died of AIDS	51 person(s)	50 person(s)	61 person(s)
Orphaned/abandoned children under 18 yrs old (all cases)	217 person(s)	197 person(s)	227 person(s)
Elderly persons without guardian	45 person(s)	50 person(s)	75 person(s)
Disabled people able to earn an income	27 person(s)	30 person(s)	38 person(s)
Disabled people unable to earn an income	39 person(s)	61 person(s)	24 person(s)
Disabled people under 18 yrs old	23 person(s)	29 person(s)	16 person(s)
Victims of natural disasters	742 families	42 families	66 families
Victims of land mines and unexploded weapons	32 person(s)	5 person(s)	0 person(s)

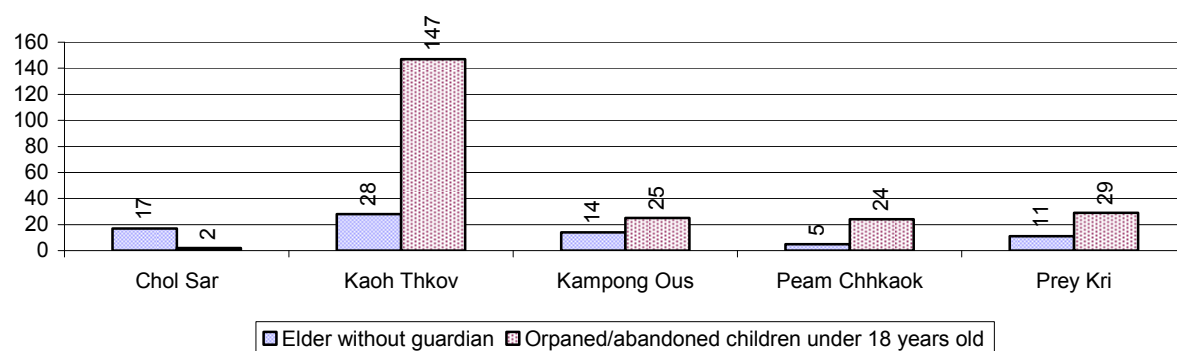
3.4.2 Registered Victims of sexual Abuse or Trafficking, by Commune, for 2008



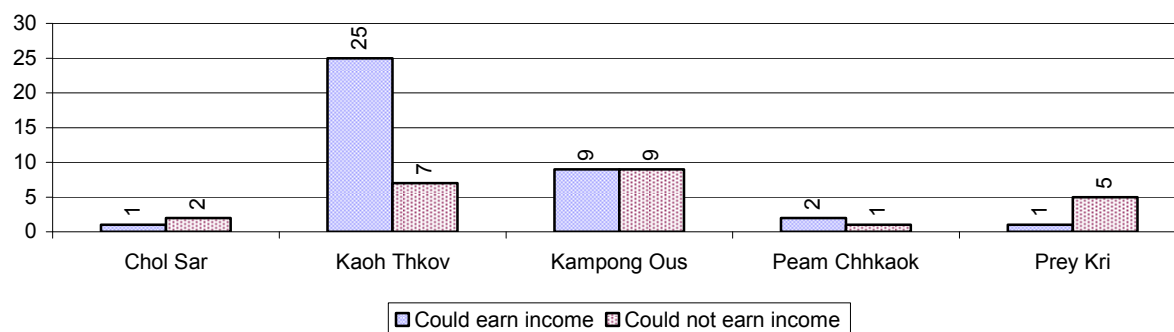
3.4.3 Registered Families with Member(s) using Drugs or living with HIV/AIDS, by Commune, for 2008



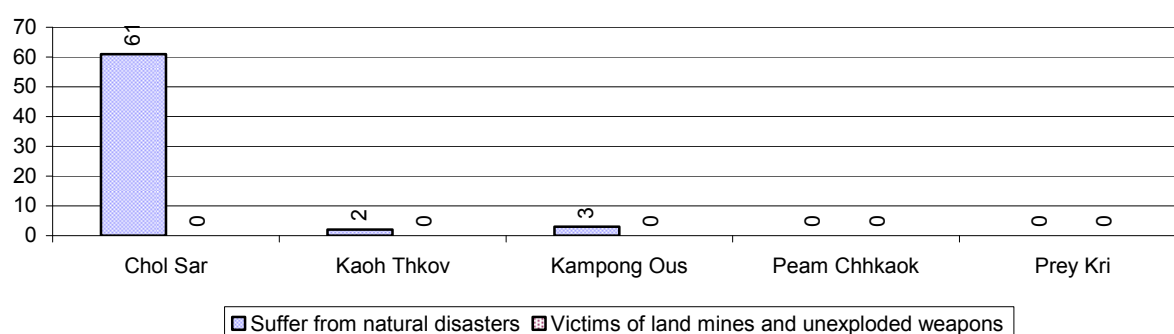
3.4.4 Elderly Persons without a Guardian and orphaned/abandoned Children under 18 years old, by Commune, for 2008



3.4.5 Number of disabled People who could or could not earn an Income, by Commune, for 2008



3.4.6 Number of Families who suffered from natural Disasters, and number of Victims of Land Mines and unexploded Weapons, by Commune, in 2008



3.5 Migration

3.5.1 Migration over 3 years

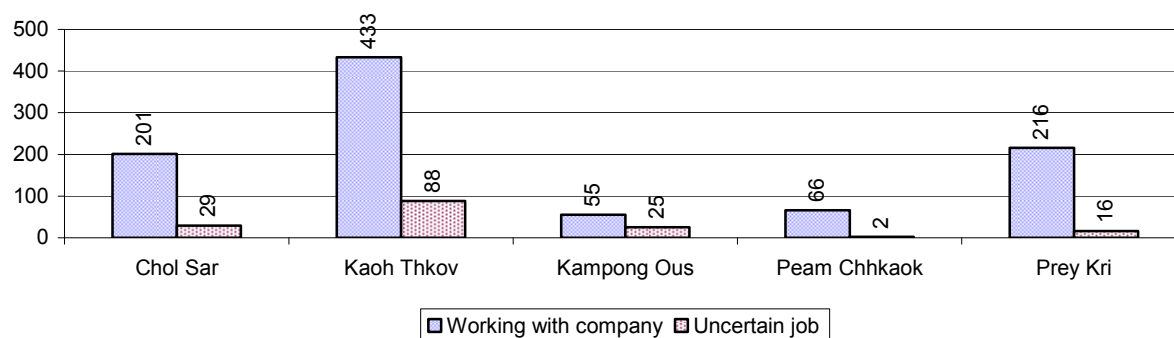
Description	2006	2007	2008
Number of families permanently in-migrated	23 families	74 families	33 families
Total number of people	121 person(s)	315 person(s)	141 person(s)
Total number of female	67 person(s)	162 person(s)	80 person(s)
Number of families permanently out-migrated	29 families	33 families	68 families
Total number of people	112 person(s)	150 person(s)	289 person(s)
Total number of female	52 person(s)	80 person(s)	154 person(s)
Number of families staying temporarily	52 families	51 families	22 families
Total number of people	179 person(s)	154 person(s)	85 person(s)
Total number of female	80 person(s)	73 person(s)	40 person(s)

3.5.2 Job Migration

Description	2006	2007	2008
Number of people migrated to work with company/factory	4%	5%	6%
Number of people migrated to work, but have uncertain jobs	0%	1%	1%

Note: Calculated as a percentage of the total population of 18-60 year olds

3.5.3 Number of People working outside their home Villages in a Company/Factory or with an uncertain Job in 2008

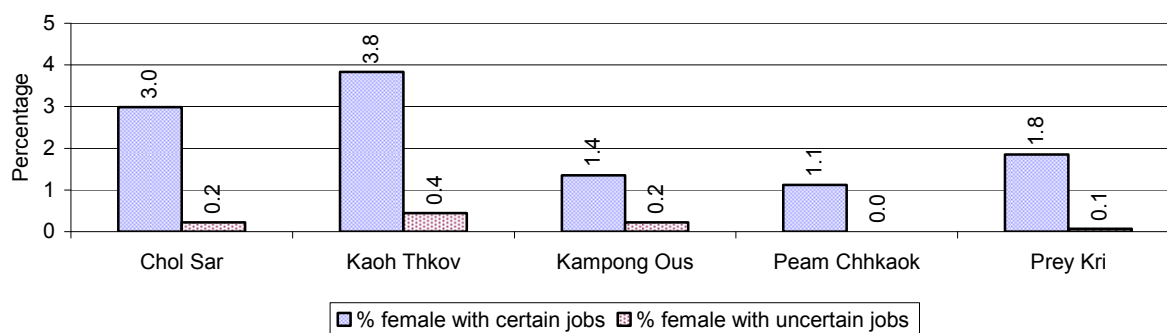


3.5.4 Female migration over 3 years

Description	2006 %	2007 %	2008	
			%	Number
Total number of migrants	2.3%	2.8%	3.3%	1,131 person(s)
Number of female migrants	1.8%	2.3%	2.6%	904 person(s)
Total number of migrants, who go to work with company/factory (with certain jobs)	2.0%	2.5%	2.8%	971 person(s)
Number of female migrants with certain jobs	1.7%	2.2%	2.4%	834 person(s)
Total number of migrants with uncertain jobs	0.2%	0.3%	0.5%	160 person(s)
Number of female migrants with uncertain jobs	0.1%	0.1%	0.2%	70 person(s)

Note: Calculated as a percentage of the total population

3.5.5 Percentage female Migrants with certain and uncertain Jobs, by Commune, in 2008



Note: Calculated as a percentage of the total population of the commune

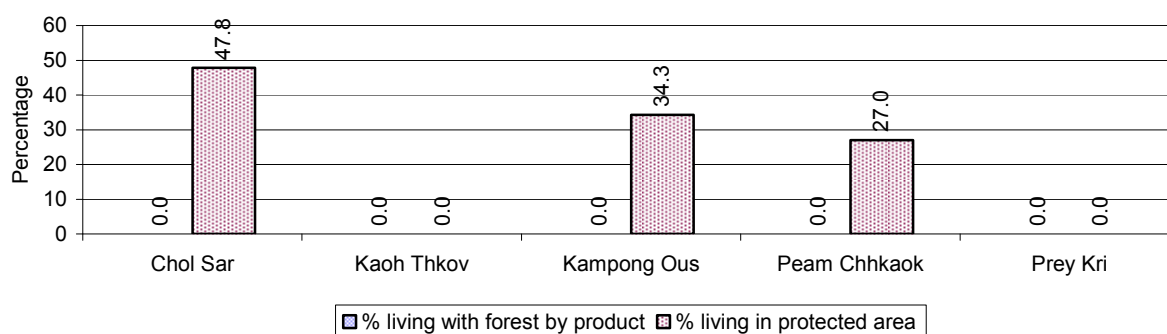
4 Natural Resources and Environment (NRE)

4.1 Families involved with NRE issues over 3 years

Description	2006 %	2007 %	2008	
			%	Number
Families living with forest by products	0 %	0 %	0 %	0 families
Families living in a protected area	21 %	14 %	17 %	1,125 families
Houses with access to garbage collection service	0 %	0 %	0 %	0 families
Families affected by environmental pollution	16 %	16 %	4 %	246 families
Families using chemical fertilizer	67 %	68 %	79 %	5,136 families
Families using chemical pesticide	72 %	72 %	76 %	4,943 families

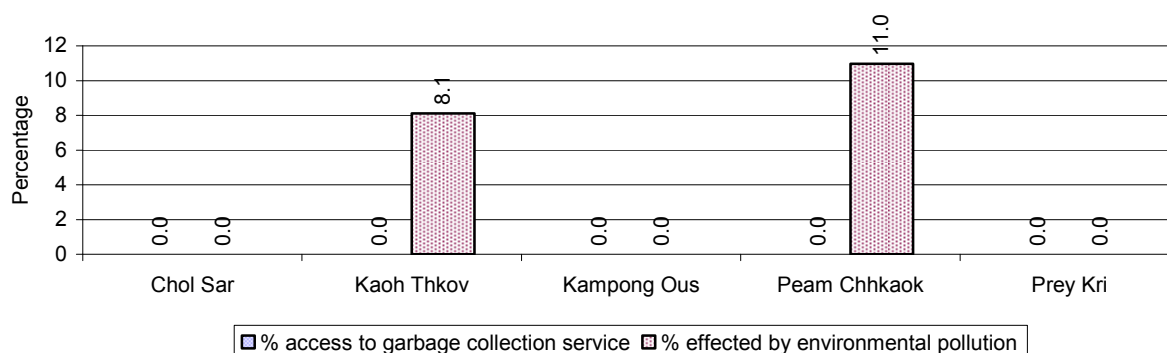
Note: Calculated as a percentage of the total number of families

4.2 Percentage of Families involved with Natural Resource issues, by Commune, for 2008



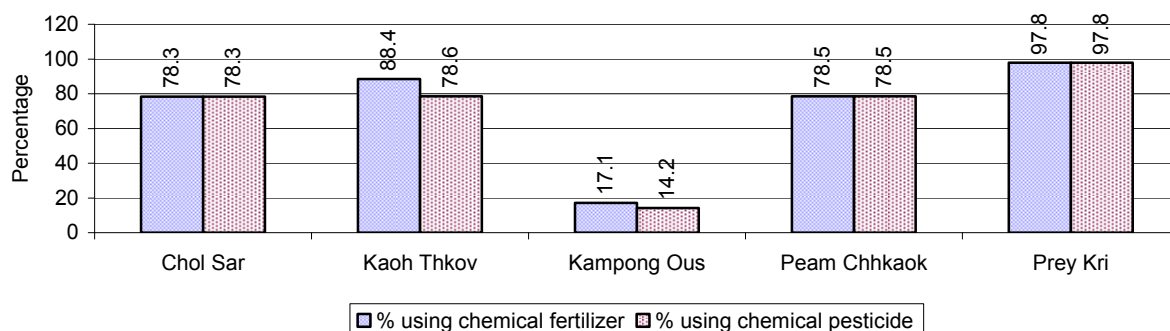
Note: Calculated as a percentage of the number of families in each commune

4.3 Percentage Houses with access to Garbage collection and Families affected by environmental Pollution, by Commune, for 2008



Note: Garbage collection is calculated as a percentage of the total number of houses in each commune and families affected by environmental pollution is calculated as a percentage of the total number of families in each commune.

4.4 Percentage Families using chemical Fertilizer and chemical Pesticides, by Commune, for 2008



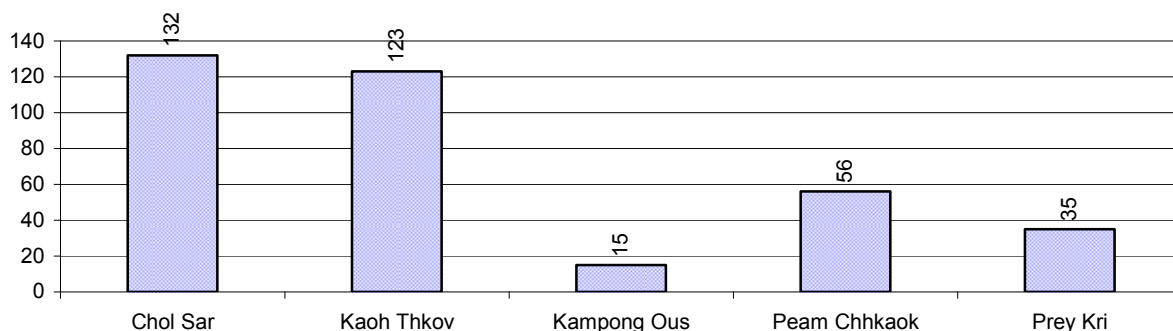
Note: Calculated as a percentage of the total number of families in each commune

5 Administration and Security

5.1 Birth Registration across 3 years

Description	2006	2007	2008
Number of infants to be registered	649 person(s)	665 person(s)	559 person(s)
Number of unregistered infants the year	210 person(s)	452 person(s)	361 person(s)
Percentage of infants unregistered	32 %	68 %	65 %

5.2 Number of unregistered Infants born in 2008, by Commune

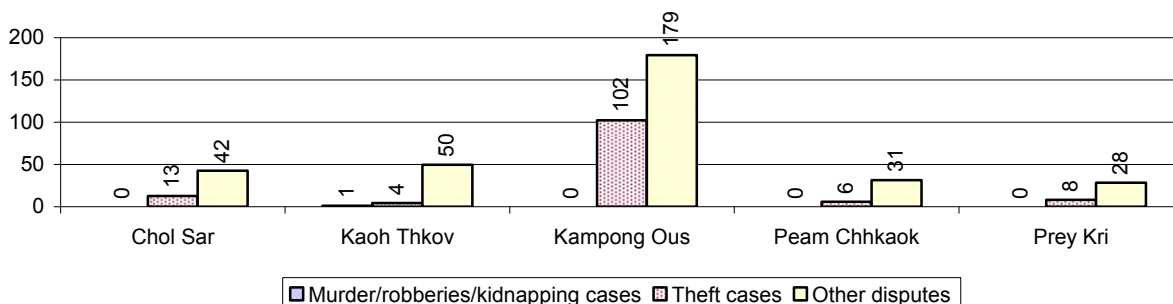


5.3 Registered criminal Cases over 3 years

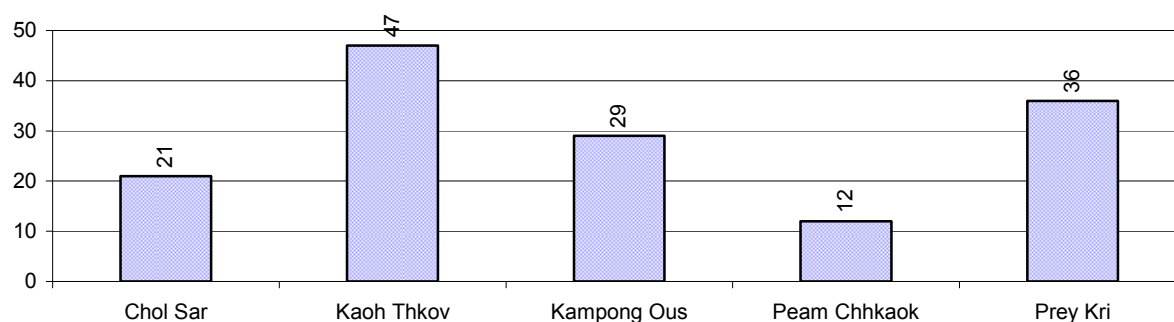
Description	2006	2007	2008
Murders, robberies and kidnapping cases	2 case(s)	0 case(s)	1 case(s)
Theft cases	47 case(s)	56 case(s)	60 case(s)
land dispute cases	144 case(s)	138 case(s)	145 case(s)
Other disputes cases	164 case(s)	166 case(s)	182 case(s)

Note: this reflects only registered criminal cases

5.4 Registered criminal Cases per 10,000 people, by Commune, for 2008



5.5 Number of registered Land Disputes, by Commune, in 2008

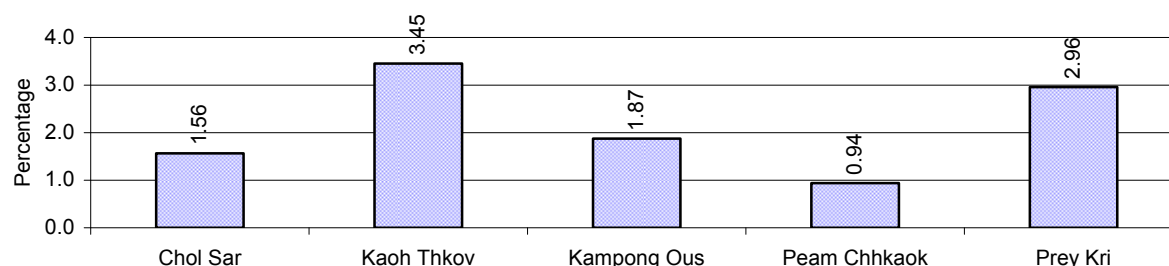


6 Gender

6.1 Registered Domestic Violence over 3 years

Description		2006	2007	2008
Families experiencing domestic violence		137 families	138 families	155 families(s)
% families experiencing domestic violence		2 %	2 %	2 %
Domestic violence cases reported by village chiefs		71 case(s)	82 case(s)	200 case(s)
Type	Physical violence	21 case(s)	75 case(s)	127 case(s)
	Sexual violence	0 case(s)	0 case(s)	1 case(s)
	Mental violence	32 case(s)	3 case(s)	44 case(s)
	Household economic violence	18 case(s)	4 case(s)	28 case(s)
Number of administrative decisions on domestic violence		48 case(s)	82 case(s)	148 case(s)
% of administrative decisions on domestic violence		68 %	100 %	74 %

6.2 Percentage of registered cases of Families experiencing domestic Violence, by Commune, in 2008



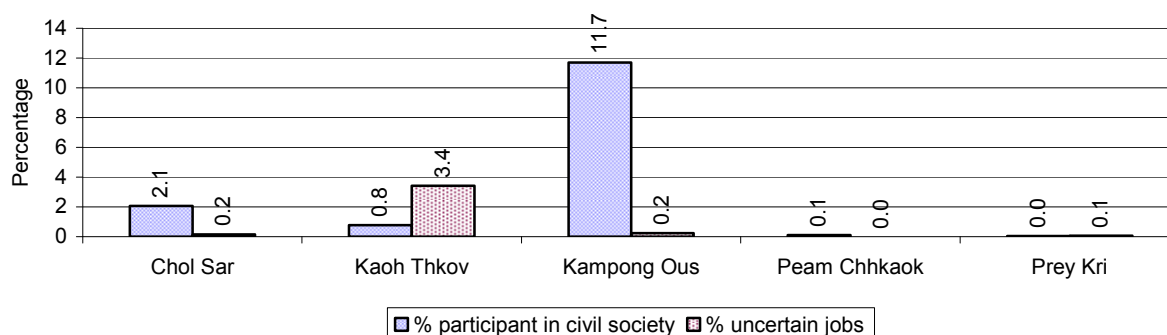
Note: Calculated as a percentage of the total number of families in each commune

6.3 Women's involvement over 3 years

Description	2006 %	2007 %	2008	
			%	Number
People participating in civil society	3%	4%	4%	1,448 person(s)
Women participating in civil society	1%	1%	2%	636 person(s)
People, 18-60 yrs, with uncertain/irregular jobs	0%	1%	2%	301 person(s)
Women, 18-60 yrs, with uncertain/irregular jobs	0%	0%	1%	164 person(s)

Note: Participation can be in NGOs, CBOs, credit groups, women's unions, parties and other civil society organizations. The first section is calculated as a percentage of the total population. The second section is calculated as a percentage of the total 18-60 year old population.

6.4 Percentage of Female Participants in Civil Society and of 18-60 year women with uncertain Jobs, by Commune, in 2008



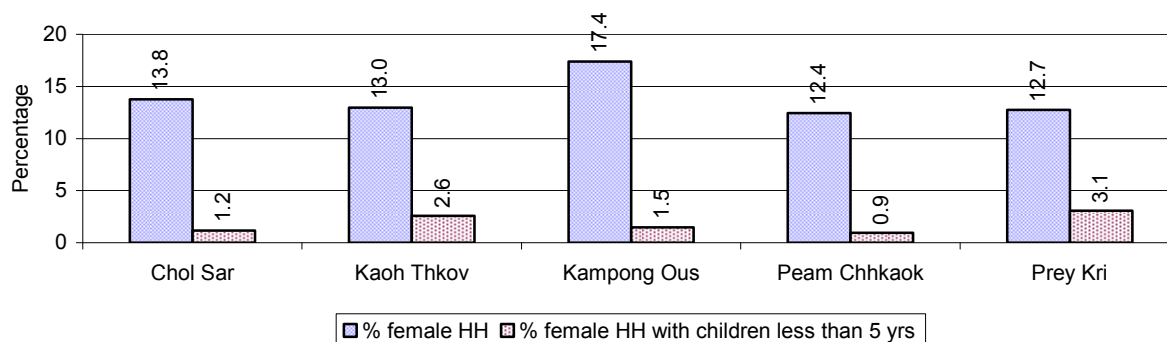
Note: Percentage of female participants in civil society is calculated as a percentage of the total population per commune. The percentage of 18-60 years old women with uncertain jobs is calculated as a percentage of the total 18-60 year old population per commune.

6.5 Female-headed Households over 3 years

Families with:	2006	2007	2008	
	%	%	%	Number
Households in which a woman is the family head	15%	14%	13%	874 families
Households in which a woman is the family head with children of less than 5 yrs	2%	2%	2%	134 families

Note: Calculated as a percentage of the total number of families

6.6 Percentage female-headed Households and with Children of less than 5 years old, by Commune, in 2008



Note: Calculated as a percentage of the total number of families in each commune
HH: Headed Household

7 Indigenous People in the District

7.1 Ethnic Minorities in the District over 3 years

Race of indigenous	2006		2007		2008	
	# families	# population	# families	# population	# families	# population
Phnong	0 families	0 person(s)	0 families	0 person(s)	0 families	0 person(s)
Kouy	0 families	0 person(s)	0 families	0 person(s)	0 families	0 person(s)
Stieng	0 families	0 person(s)	0 families	0 person(s)	0 families	0 person(s)
Mil	0 families	0 person(s)	0 families	0 person(s)	0 families	0 person(s)
Kroal	0 families	0 person(s)	0 families	0 person(s)	0 families	0 person(s)
Thmorn	0 families	0 person(s)	0 families	0 person(s)	0 families	0 person(s)
Khaonh	0 families	0 person(s)	0 families	0 person(s)	0 families	0 person(s)
Tompouonn	0 families	0 person(s)	0 families	0 person(s)	0 families	0 person(s)
Charay	0 families	0 person(s)	0 families	0 person(s)	0 families	0 person(s)
Kroeung	0 families	0 person(s)	0 families	0 person(s)	0 families	0 person(s)
Kavet	0 families	0 person(s)	0 families	0 person(s)	0 families	0 person(s)
Saouch	0 families	0 person(s)	0 families	0 person(s)	0 families	0 person(s)
Lun	0 families	0 person(s)	0 families	0 person(s)	0 families	0 person(s)
Kachak	0 families	0 person(s)	0 families	0 person(s)	0 families	0 person(s)
Praov	0 families	0 person(s)	0 families	0 person(s)	0 families	0 person(s)
Others	0 families	0 person(s)	0 families	0 person(s)	0 families	0 person(s)
Total	0 families	0 person(s)	0 families	0 person(s)	0 families	0 person(s)

Note: "Others" refer to other ethnic groups which are not listed.

7.2 Other Minorities in the District over 3 years

Minority	2006		2007		2008	
	# families	# population	# families	# population	# families	# population
Khmer Islamic	2 families	6 person(s)	0 families	0 person(s)	0 families	0 person(s)
Vietnamese	31 families	155 person(s)	0 families	0 person(s)	31 families	196 person(s)
Laos	0 families	0 person(s)	0 families	0 person(s)	0 families	0 person(s)

Note: Number of indigenous and minority population are additional data, so some village may not recorded.

SECTION C: PLANS AND PROJECTS

8 Priorities and Plans

8.1 Priorities of Commune Councils for 2009 in the District by Sector

The District Priority Activity Matrix (DPAM) data are taken from the CDPD. The DPAM is used for the District Integration Workshop (DIW), to show what kind of projects the commune has proposed in their Commune Investment Plan (CIP) for 2009. Donors, departments and other agencies then consider which projects they want to support and which projects they are not interested in. This results in Temporary Agreements between the Commune Council and the Supporter (NGO, Department, private donor, etc), as shown in table 8.2

No.	Project Name	Chol Sar	Kaoh Thkov	Kampong Ous	Peam Chhkaok	Prey Kri	Req.Project
		40201	40202	40203	40204	40205	Total
Economic							
1	Compost fertilizer training	2 training	2 training	2 training	2 training	3 training	6
2	Chemical and pesticide application training		3 training		3 training	3 training	3
3	Mixed farming system training				4 training		1
4	Rice seed production training	2 training				3 training	2
5	Rice field demonstration		2 training				1
6	Mushroom growing training		2 training	2 training	3 training		3
7	Rice cultivation technique training			2 training			1
8	Animal vaccination request	2 time	2 training			3 training	3
9	Village veterinary training	1 training	1 training			3 training	3
10	Animal raising training	1 training		2 training	4 training	3 training	4
11	Calf for raising request	55 Head					1
12	Pesticide request			2 time			1
13	Vegetable seeds request		400 Kg				1
14	Chicken request		575 Head				1
15	Fish raising training	1 training			4 training	3 training	3
16	Fishing technique training				200 Head		1
17	Road maintenance committee					3 training	1
18	Culvert construction		6 place			5 place	2
19	Bridger construction	3 place	1000 m		33 m		3
20	Port construction	5 set					1
21	Laterite/natural gravel road repairing	2500 m	3770 m	2130 m	1875 m	2857 m	5
22	Canal construction			180 m	2095 m	867 m	3
23	Dam construction					961 m	1
24	Water gate construction		13 place			8 place	2
25	Culvert with stop logs construction					15 place	1

District Data Book 2009: Development Plans and Projects

No.	Project Name	Chol Sar	Kaoh Thkov	Kampong Ous	Peam Chhkaok	Prey Kri	Req.Project
		40201	40202	40203	40204	40205	Total
26	Dam repairing	4990 m	9000 m	1500 m		2193 m	4
27	Spillway repairing		2000 m				1
28	Pig bank					258 Head	1
29	Livestock bank		300 Head				1
30	Saving group association strengthening	20 Team				33 time	2
Social							
1	Family planning				10 Time		2
2	Mosquito insecticide spraying campaign					3 training	2
3	Patients transport mean improvement	50 person		10 time			3
4	Maternal health care education	2 training					1
5	Latrine construction	230 toilet	1200 toilet	25 toilet	800 toilet	336 family	5
6	Latrine construction at school			1 toilet	6 toilet		2
7	Sanitation education		2 training			3 training	3
8	Village health post construction	1 building					1
9	Patient transportation means established		2 set				1
10	Commune health center repairing				25 m		1
11	Patient transportation means repairing				2 set		1
12	Water filter equipment supply				383 Container	769 family	2
13	Water supply			100 Container			1
14	Giant water jar provision			25 Jar	800 Jar		2
15	Family wate jars provision	70 Jar	603 Container	5 Reservoir	5 tank	336 Reservoir	6
16	Pump wells construction	15 well					1
17	Ponds repairing					5 place	1
18	Safe water equipment maintaining/repairing training					5 place	1
19	Literacy class			2 class	2 class	6 class	3
20	Literacy teacher support					6 person	1
21	Literacy class materials support					3 time	1
22	Junior high school construction	1 building					1
23	School building		4 building				1
24	Primary school creation/construction	3 building					1
25	Kindergarten school construction/repair	1 building	10 building	1 class	2 building		4

District Data Book 2009: Development Plans and Projects

No.	Project Name	Chol Sar	Kaoh Thkov	Kampong Ous	Peam Chhkaok	Prey Kri	Req.Project
		40201	40202	40203	40204	40205	Total
26	Pre-school teacher/kid keeper support		10 person	11 training	2 person		3
27	Motivating pupil's parents for school enrollment		2 training			33 training	2
28	School materials support to poor pupils			1 time	1 Time	3 time	3
29	Scholarship provision to poor pupils		2 set			3 training	2
30	Skill training project	4 training					1
31	Teacher/volunteer teacher training		7 person			3 training	2
32	Emergency relief	5 training				3 time	2
33	Flood refuge mound/temporary shelter provision			2 place			1
34	Emergency relief for the poor			1 time			1
35	Emergency assistance network/relief preparation	2 training		4 Time			3
36	Khmer "Pinpeat" music skill training/provision			1 training			1
37	Food/materials support to orphan	25 person					1
38	House for the poor construction/repairing	30 building		50 house			2
39	Boat provision to poor family			25 set			1
40	Elderly people support				1 time		1
NREM							
1	Environmental awareness and law education	2 time		2 training	1 training	3 training	4
2	Fishery law education		4 training	5 board			2
3	Forestry law education	2 training					1
4	Education on importance of the forests		3 training			2 place	2
5	Bamboo forest plantation/coservation	1 place					1
6	Education on the effect of polluted water		2 training				1
7	Establishment of NREM protection community					2 place	1
8	Tree plantation project	1 place		500 Tree			2
9	Illegal fishing prevention	2 training	3 training		3 training	3 training	4
10	Strengthening fishery community		5 training				1
11	Natural water ways/reservoirs rehabilitation/conservation	1 place	6 place				2
12	Community forestry activities support		4 training				1
13	Drainage canal construction/rehabilitation					2857 m	1
14	Waste management education		2 training				1
15	Waste control measurement					3 training	1
Administration and Security							
1	Civil registration encouragement				3 training		1
2	Land law dissemination	2 time	5 training	1 training	2 training	3 training	5

District Data Book 2009: Development Plans and Projects

No.	Project Name	Chol Sar	Kaoh Thkov	Kampong Ous	Peam Chhkaok	Prey Kri	Req.Project
		40201	40202	40203	40204	40205	Total
3	Provision of land titles/certificates	5503 doc				3 time	2
4	Drug and related law education		2 training				1
5	Human right and related law education		3 training				1
6	Penal and civil law dissemination	2 training	4 training	2 training	2 training	3 training	5
7	Traffic law and public order dissemination			1 training			1
Gender							
1	Gender mainstreaming concept training			1 training		3 training	2
2	Gender concept/equity mainstreaming					3 training	1
3	Women leadership strengthening/capacity building					1 time	1
4	Woman and children's rights dissemination					3 training	1
5	Women/children rights alleviation support					3 training	1
6	Women vocational training	2 training	5 training	1 training		3 training	4
7	Tailor skill training				1 training		1
8	Materials support to create women job	30 person					1
9	Law against domestic violence dissemination	2 training	66 training	1 training	2 training	3 training	5

Source: CDPD – District Priority Matrix

8.2 Temporary Agreements by Commune, for 2009²

At the District Integration Workshop (DIW) the Supporters (donors, agencies, private donors, NGOs, etc.) identify which projects/activities they would like to support or they put forward their own projects to be implemented in a particular commune. Once there is agreement between Commune Councils and Supporters on specific projects a **Temporary Agreement** is signed by the commune and the Supporter to show their mutual commitment to the identified projects/activities.

It is important to keep in mind that such Temporary Agreements do not necessarily result in implementation.

8.2.1 Temporary Agreements for 2009 as per DIW 2008 for Commune: Chol Sar

Commune GIS	Commune	Temporary Agreements				Supporter	Funding Source	Listed in CIP before DIW
		Project Name	Quantity	Unit	Est.Cost (K.Riels)			
Economic								
40201	Chol Sar	Rice bank support	1	place	600	Commission of Cambodia for Development		<input type="checkbox"/>
40201	Chol Sar	Community training	1	Time	420	Commission of Cambodia for Development		<input type="checkbox"/>
40201	Chol Sar	Village net work meeting	5	Time	320	Commission of Cambodia for Development		<input type="checkbox"/>
40201	Chol Sar	Community study tour	1	Time	300	Commission of Cambodia for Development		<input type="checkbox"/>
40201	Chol Sar	Compost fertilizer training	1	training	400	World Vision International - Cambodia		✓
40201	Chol Sar	Community training project	1	Time	100	Commission of Cambodia for Development		<input type="checkbox"/>
40201	Chol Sar	Small scale infrastructure support	20	m	2000	Commission of Cambodia for Development		<input type="checkbox"/>
40201	Chol Sar	Agriculture extension project	1	Time	120	Commission of Cambodia for Development		<input type="checkbox"/>
40201	Chol Sar	Seed provision to farmers	1	Time	100	Commission of Cambodia for Development		<input type="checkbox"/>
40201	Chol Sar	Farmer materials support	1	Time	80	Commission of Cambodia for Development		<input type="checkbox"/>
40201	Chol Sar	Self-help group meeting support	5	Time	340	Commission of Cambodia for Development		<input type="checkbox"/>

² Not all the data from the CDPD has been translated to English, this has resulted in some cells in the TA tables being blank.

District Data Book 2009: Development Plans and Projects

Commune GIS	Commune	Temporary Agreements				Supporter	Funding Source	Listed in CIP before DIW
		Project Name	Quantity	Unit	Est.Cost (K.Riels)			
40201	Chol Sar	Self-help group planning support	1	Time	120	Commission of Cambodia for Development		<input type="checkbox"/>
40201	Chol Sar	Disaster management training	1	Time	200	Commission of Cambodia for Development		<input type="checkbox"/>
40201	Chol Sar	Emergency relief within community	1	Time	800	Commission of Cambodia for Development		<input type="checkbox"/>
40201	Chol Sar	Village saving group meeting support	5	Time	300	Commission of Cambodia for Development		<input type="checkbox"/>
40201	Chol Sar	Agriculture extension project	1	Time	400	Commission of Cambodia for Development		<input type="checkbox"/>
Social								
40201	Chol Sar	Poor pupils support	12	Month	1440	Commission of Cambodia for Development		<input type="checkbox"/>
40201	Chol Sar	Emergency relief	1	training	400	World Vision International - Cambodia		✓
40201	Chol Sar	Emergency assistance network/relief preparation	4	training	160	World Vision International - Cambodia		✓
40201	Chol Sar	Emergency assistance network/relief preparation	1	training	400	World Vision International - Cambodia		✓
40201	Chol Sar	House for the poor construction/repairing	1	building	2500	World Vision International - Cambodia		✓
40201	Chol Sar	Food/materials support to orphan	1	Time	2000	World Vision International - Cambodia		✓
40201	Chol Sar	Fund and DRR materials support	1	Time	800	Commission of Cambodia for Development		<input type="checkbox"/>
NREM								
40201	Chol Sar	Environmental awareness and law education	1	time	400	Department of Environment		✓
40201	Chol Sar	Tree plantation project	1	place	3000	World Vision International - Cambodia		✓
40201	Chol Sar	Fishery community join meeting	5	Time	12500	Commission of Cambodia for Development		<input type="checkbox"/>
40201	Chol Sar	Illegal fishing activities control	1	training	600	Commission of Cambodia for Development		<input type="checkbox"/>

District Data Book 2009: Development Plans and Projects

Commune GIS	Commune	Temporary Agreements				Supporter	Funding Source	Listed in CIP before DIW
		Project Name	Quantity	Unit	Est.Cost (K.Riels)			
40201	Chol Sar	NRM conservation area demarcation support	1	place	2400	Commission of Cambodia for Development		<input type="checkbox"/>
Administration and Security								
40201	Chol Sar	Land law dissemination	1	time	400	Department of Land Management, Urban Planning & Construction		✓
40201	Chol Sar	Commune planning meeting support	1	Time	100	Commission of Cambodia for Development		<input type="checkbox"/>
40201	Chol Sar	Inter-commune project support	1	Time	80	Commission of Cambodia for Development		<input type="checkbox"/>
40201	Chol Sar	Community information board support	1	Time	880	Commission of Cambodia for Development		<input type="checkbox"/>
Gender								
40201	Chol Sar	Law against domestic violence dissemination	1	training	400	World Vision International - Cambodia		✓
40201	Chol Sar	Women Right's Day organizing	1	Time	140	Commission of Cambodia for Development		<input type="checkbox"/>
40201	Chol Sar	Woman network planning support	1	Time	120	Commission of Cambodia for Development		<input type="checkbox"/>
40201	Chol Sar	Women capacity strengthening meeting	1	Time	320	Commission of Cambodia for Development		<input type="checkbox"/>

8.2.2 Temporary Agreements for 2009 as per DIW 2008 for Commune: Kaoh Thkov

Commune GIS	Commune	Temporary Agreements				Supporter	Funding Source	Listed in CIP before DIW
		Project Name	Quantity	Unit	Est.Cost (K.Riels)			
Economic								
40202	Kaoh Thkov	Community training project	1	training	320	Commission of Cambodia for Development		<input type="checkbox"/>
40202	Kaoh Thkov	Community training	3	Time	1660	Commission of Cambodia for Development		<input type="checkbox"/>
40202	Kaoh Thkov	Vegetable seeds request	8	Kg	340	Commission of Cambodia for Development		✓
40202	Kaoh Thkov	Agriculture extension project	1	time	140	Commission of Cambodia for Development		<input type="checkbox"/>
40202	Kaoh Thkov	Village net work meeting	5	Time	440	Commission of Cambodia for Development		<input type="checkbox"/>
40202	Kaoh Thkov	Rice bank support	1	village	12000	Commission of Cambodia for Development		<input type="checkbox"/>
40202	Kaoh Thkov	Village saving group meeting support	5	Time	600	Commission of Cambodia for Development		<input type="checkbox"/>
40202	Kaoh Thkov	Farmer materials support	1	time	140	Commission of Cambodia for Development		<input type="checkbox"/>
40202	Kaoh Thkov	Self-help group planning support	2	Time	200	Commission of Cambodia for Development		<input type="checkbox"/>
40202	Kaoh Thkov	Self-help group meeting support	5	Time	480	Commission of Cambodia for Development		<input type="checkbox"/>
40202	Kaoh Thkov	Agriculture extension project	3	training	200	Commission of Cambodia for Development		<input type="checkbox"/>
40202	Kaoh Thkov	Cow bank support	1	Time	9600	Commission of Cambodia for Development		<input type="checkbox"/>
40202	Kaoh Thkov	Fund for group activities	1	time	2400	Commission of Cambodia for Development		<input type="checkbox"/>
40202	Kaoh Thkov	Community study tour support	1	Time	896	Commission of Cambodia for Development		<input type="checkbox"/>
Social								
40202	Kaoh Thkov	Emergency reliefs	1	Time	100	Commission of Cambodia for Development		<input type="checkbox"/>

District Data Book 2009: Development Plans and Projects

Commune GIS	Commune	Temporary Agreements				Supporter	Funding Source	Listed in CIP befor DIW
		Project Name	Quantity	Unit	Est.Cost (K.Riels)			
40202	Kaoh Thkov	Poor pupils support	12	training	1680	Commission of Cambodia for Development		<input type="checkbox"/>
40202	Kaoh Thkov	Traditional dance group strengthening	1	training	276	Department of Culture and Fine Arts		<input type="checkbox"/>
40202	Kaoh Thkov	HIV/AIDS carrier support	1	Time	60	Commission of Cambodia for Development		<input type="checkbox"/>
40202	Kaoh Thkov	Vagabond people support	1	Time	60	Commission of Cambodia for Development		<input type="checkbox"/>
40202	Kaoh Thkov	Fund, house and boats support	1	Time	10000	Commission of Cambodia for Development		<input type="checkbox"/>
NREM								
40202	Kaoh Thkov	Natural water ways/reservoirs rehabilitation/conservation	1	Time	2000	Commission of Cambodia for Development		✓
40202	Kaoh Thkov	Illegal fishing prevention	2	training	1200	Commission of Cambodia for Development		✓
40202	Kaoh Thkov	Strengthening fishery community	5	Time	1540	Commission of Cambodia for Development		✓
40202	Kaoh Thkov	Environmental pollution caused by solid waste dissemination	1	training	125	Commission of Cambodia for Development		<input type="checkbox"/>
40202	Kaoh Thkov	Waste management education	1	training	130	Department of Environment		✓
Administration and Security								
40202	Kaoh Thkov	Land law dissemination	1	training	125	Department of Land Management, Urban Planning & Construction		✓
40202	Kaoh Thkov	Commune planning meeting support	1	Time	120	Commission of Cambodia for Development		<input type="checkbox"/>
40202	Kaoh Thkov	Inter-commune project support	1	Time	80	Commission of Cambodia for Development		<input type="checkbox"/>
40202	Kaoh Thkov	Disaster management training	1	Time	340	Commission of Cambodia for Development		<input type="checkbox"/>
40202	Kaoh Thkov	Community information board support	3	Time	1320	Commission of Cambodia for Development		<input type="checkbox"/>
Gender								

Commune GIS	Commune	Temporary Agreements				Supporter	Funding Source	Listed in CIP before DIW
		Project Name	Quantity	Unit	Est.Cost (K.Riels)			
40202	Kaoh Thkov	Woman network planning support	2	time	400	Commission of Cambodia for Development		<input type="checkbox"/>
40202	Kaoh Thkov	Women Right's Day organizing	1	Time	320	Commission of Cambodia for Development		<input type="checkbox"/>
40202	Kaoh Thkov	Women network join meeting	1	Time	200	Commission of Cambodia for Development		<input type="checkbox"/>

8.2.3 Temporary Agreements for 2009 as per DIW 2008 for Commune: Kampong Ous

Commune GIS	Commune	Temporary Agreements				Supporter	Funding Source	Listed in CIP befor DIW
		Project Name	Quantity	Unit	Est.Cost (K.Riels)			
Economic								
40203	Kampong Ous	Rice bank support	1	Time	60	Commission of Cambodia for Development		<input type="checkbox"/>
40203	Kampong Ous	Compost fertilizer training	2	training	1000	World Vision International - Cambodia		✓
40203	Kampong Ous	Strengthening fishery community	1	Time	120	Commission of Cambodia for Development		<input type="checkbox"/>
40203	Kampong Ous	Village net work meeting	5	Time	180	Commission of Cambodia for Development		<input type="checkbox"/>
40203	Kampong Ous	Rice cultivation technique training	2	training	1000	World Vision International - Cambodia		✓
40203	Kampong Ous	Training project for community	1	Time	400	Commission of Cambodia for Development		<input type="checkbox"/>
40203	Kampong Ous	Agriculture extension project	1	Time	18	Commission of Cambodia for Development		<input type="checkbox"/>
40203	Kampong Ous	Farmer materials support	1	Time	10	Commission of Cambodia for Development		<input type="checkbox"/>
40203	Kampong Ous	Partnership project support	1	Time	80	Commission of Cambodia for Development		<input type="checkbox"/>
40203	Kampong Ous	Self-help group strengthening meeting	5	Time	240	Commission of Cambodia for Development		<input type="checkbox"/>
40203	Kampong Ous	Self-help group planning support	1	Time	120	Commission of Cambodia for		<input type="checkbox"/>

District Data Book 2009: Development Plans and Projects

Commune GIS	Commune	Temporary Agreements				Supporter	Funding Source	Listed in CIP before DIW
		Project Name	Quantity	Unit	Est.Cost (K.Riels)			
						Development		
40203	Kampong Ous	Village saving group meeting support	5	Time	320	Commission of Cambodia for Development		<input type="checkbox"/>
Social								
40203	Kampong Ous	Fund and DRR materials support	1	Time	600	Commission of Cambodia for Development		<input type="checkbox"/>
40203	Kampong Ous	KMeragpÁt;pÁg;Twks¥at	100	Container	5000	World Vision International - Cambodia		✓
40203	Kampong Ous	Latrine construction at school	1	toilet	10000	World Vision International - Cambodia		✓
40203	Kampong Ous	House for the poor construction/repairing	50	house	150000	World Vision International - Cambodia		✓
40203	Kampong Ous	Emergency assistance network/relief preparation	4	Time	800	World Vision International - Cambodia		✓
40203	Kampong Ous	Khmer "Pinpeat" music skill training/provision	1	training	328	World Vision International - Cambodia		✓
40203	Kampong Ous	Emergency reliefs	1	Time	100	Commission of Cambodia for Development		<input type="checkbox"/>
40203	Kampong Ous	Fishing nets support to the poor	500	package	17500	World Vision International - Cambodia		<input type="checkbox"/>
NREM								
40203	Kampong Ous	Tree plantation project	500	Tree	5000	World Vision International - Cambodia		✓
40203	Kampong Ous	Fishery law education	3	board	32	Commission of Cambodia for Development		✓
40203	Kampong Ous	Environmental awareness and law education	1	training	400	Department of Environment		✓
40203	Kampong Ous	Conservation zone creation	1	Time	40000	Commission of Cambodia for Development		<input type="checkbox"/>
Administration and Security								
40203	Kampong Ous	Community study tour organizing	1	time	320	Commission of Cambodia for Development		<input type="checkbox"/>
40203	Kampong Ous	Disaster management training	1	Time	80	Commission of Cambodia for Development		<input type="checkbox"/>

Commune GIS	Commune	Temporary Agreements				Supporter	Funding Source	Listed in CIP befor DIW
		Project Name	Quantity	Unit	Est.Cost (K.Riels)			
40203	Kampong Ous	Community news dissemination support	1	Time	10	Commission of Cambodia for Development		<input type="checkbox"/>
40203	Kampong Ous	Commune planning meeting support	1	Time	80	Commission of Cambodia for Development		<input type="checkbox"/>
40203	Kampong Ous	Fishery community join meeting	5	Time	660	Commission of Cambodia for Development		<input type="checkbox"/>
Gender								
40203	Kampong Ous	Women Right's Day organizing	1	Time	10	Commission of Cambodia for Development		<input type="checkbox"/>
40203	Kampong Ous	Woman network planning support	1	Time	130	Commission of Cambodia for Development		<input type="checkbox"/>
40203	Kampong Ous	Woman network capacity strengthening join meeting	1	Time	120	Commission of Cambodia for Development		<input type="checkbox"/>

8.2.4 Temporary Agreements for 2009 as per DIW 2008 for Commune: Peam Chhkaok

Commune GIS	Commune	Temporary Agreements				Supporter	Funding Source	Listed in CIP befor DIW
		Project Name	Quantity	Unit	Est.Cost (K.Riels)			
Economic								
40204	Peam Chhkaok	Self-help group planning support	1	Time	72	Commission of Cambodia for Development		<input type="checkbox"/>
40204	Peam Chhkaok	Agriculture extension project	1	training	60	Commission of Cambodia for Development		<input type="checkbox"/>
40204	Peam Chhkaok	Community strengthening meeting	5	Time	220	Commission of Cambodia for Development		<input type="checkbox"/>
40204	Peam Chhkaok	Village net work meeting	5	Time	120	Commission of Cambodia for Development		<input type="checkbox"/>
40204	Peam Chhkaok	Self-help group strengthening meeting	5	Time	140	Commission of Cambodia for Development		<input type="checkbox"/>
40204	Peam Chhkaok	Village saving group meeting support	5	Time	60	Commission of Cambodia for Development		<input type="checkbox"/>
Social								

District Data Book 2009: Development Plans and Projects

Commune GIS	Commune	Temporary Agreements				Supporter	Funding Source	Listed in CIP befor DIW
		Project Name	Quantity	Unit	Est.Cost (K.Riels)			
40204	Peam Chhkaok	Disaster management training	1	Time	80	Commission of Cambodia for Development		<input type="checkbox"/>
40204	Peam Chhkaok	Emergency relief	1	Time	80	Commission of Cambodia for Development		<input type="checkbox"/>
40204	Peam Chhkaok	Disaster management committee strengthening	3	training	2000	Commission of Cambodia for Development		<input type="checkbox"/>
40204	Peam Chhkaok	Project proposal and report writing training	2	training	3400	Commission of Cambodia for Development		<input type="checkbox"/>
40204	Peam Chhkaok	Vitamin A day	2	training	80	Commission of Cambodia for Development		<input type="checkbox"/>
NREM								
40204	Peam Chhkaok	NRM conservation area demarcation support	1	place	2400	Commission of Cambodia for Development		<input type="checkbox"/>
40204	Peam Chhkaok	Windy protection tree seedling supply	1	training	1000	Commission of Cambodia for Development		<input type="checkbox"/>
40204	Peam Chhkaok	Environmental awareness and law education	1	training	400	Department of Environment	PIF	✓
40204	Peam Chhkaok	Community fishery training	1	Time	200	Commission of Cambodia for Development		<input type="checkbox"/>
40204	Peam Chhkaok	Illegal fishing activities control	1	Time	120	Commission of Cambodia for Development		<input type="checkbox"/>
Administration and Security								
40204	Peam Chhkaok	DRR materials support	1	Time	340	Commission of Cambodia for Development		<input type="checkbox"/>
40204	Peam Chhkaok	Inter-commune project support	1	Time	80	Commission of Cambodia for Development		<input type="checkbox"/>
40204	Peam Chhkaok	Commune planning meeting support	1	training	80	Commission of Cambodia for Development		<input type="checkbox"/>
Gender								
40204	Peam Chhkaok	Women capacity strengthening meeting	1	Time	80	Commission of Cambodia for Development		<input type="checkbox"/>
40204	Peam Chhkaok	Women Right's Day organizing	1	Time	100	Commission of Cambodia for Development		<input type="checkbox"/>
40204	Peam	Woman planning support	1	Time	80	Commission of Cambodia for		<input type="checkbox"/>

Commune GIS	Commune	Temporary Agreements				Supporter	Funding Source	Listed in CIP befor DIW
		Project Name	Quantity	Unit	Est.Cost (K.Riels)			
	Chhkaok					Development		

8.2.5 Temporary Agreements for 2009 as per DIW 2008 for Commune: Prey Kri

Commune GIS	Commune	Temporary Agreements				Supporter	Funding Source	Listed in CIP befor DIW
		Project Name	Quantity	Unit	Est.Cost (K.Riels)			
Economic								
40205	Prey Kri	Community study tour support	1	Time	100	Commission of Cambodia for Development		<input type="checkbox"/>
40205	Prey Kri	Compost fertilizer training	3	training	10	World Vision International - Cambodia		✓
40205	Prey Kri	Community strengthening meeting	5	Time	660	Commission of Cambodia for Development		<input type="checkbox"/>
40205	Prey Kri	Village net work meeting	5	Time	180	Commission of Cambodia for Development		<input type="checkbox"/>
40205	Prey Kri	Agriculture extension project	1	Time	80	Commission of Cambodia for Development		<input type="checkbox"/>
40205	Prey Kri	Community training project	1	Time	200	Commission of Cambodia for Development		<input type="checkbox"/>
40205	Prey Kri	Livestock dung collection dissemination	1	time	40	World Vision International - Cambodia		<input type="checkbox"/>
40205	Prey Kri	Self-help group strengthening meeting	1	Time	120	Commission of Cambodia for Development		<input type="checkbox"/>
40205	Prey Kri	Self-help group planning support	1	time	80	Commission of Cambodia for Development		<input type="checkbox"/>
40205	Prey Kri	Partnership project support	1	Time	80	Commission of Cambodia for Development		<input type="checkbox"/>
40205	Prey Kri	Emergency relief	1	Time	200	Commission of Cambodia for Development		<input type="checkbox"/>
40205	Prey Kri	Fishing equipment purchasing	1	Time	200	World Vision International - Cambodia		<input type="checkbox"/>
40205	Prey Kri	Village saving group meeting support	5	Time	300	Commission of Cambodia for Development		<input type="checkbox"/>

District Data Book 2009: Development Plans and Projects

Commune GIS	Commune	Temporary Agreements				Supporter	Funding Source	Listed in CIP before DIW
		Project Name	Quantity	Unit	Est.Cost (K.Riels)			
Social								
40205	Prey Kri	Sanitation education	1	time	10	World Vision International - Cambodia		✓
40205	Prey Kri	Traditional dance group strengthening	1	training	450	Department of Culture and Fine Arts		□
40205	Prey Kri	Bird flue awareness training	2	time	800	World Vision International - Cambodia		□
40205	Prey Kri	Well repairing/maintenance training	2	place	21	World Vision International - Cambodia		✓
40205	Prey Kri	KMeragppl;meFüa)aycMeraHTwks¥at	10	family	110	World Vision International - Cambodia		✓
40205	Prey Kri	Latrine construction	15	family	213	World Vision International - Cambodia		✓
40205	Prey Kri	Fund and DRR materials support	1	Time	800	Commission of Cambodia for Development		□
40205	Prey Kri	Mosquito insecticide spraying campaign	2	time	15	World Vision International - Cambodia		✓
40205	Prey Kri	Motivating pupil's parents for school enrollment	1	time	10	World Vision International - Cambodia		✓
40205	Prey Kri	Emergency relief	2	time	15	World Vision International - Cambodia		✓
NREM								
40205	Prey Kri	Establishment of NREM protection community	3	place	120	Commission of Cambodia for Development		✓
40205	Prey Kri	Environmental awareness and law education	1	time	142	Department of Environment		□
40205	Prey Kri	Waste control measurement	3	time	16	World Vision International - Cambodia		✓
40205	Prey Kri	Environmental awareness and law education	2	time	13	World Vision International - Cambodia		✓
40205	Prey Kri	Fishery community training	1	training	10	Commission of Cambodia for Development		□
Administration and Security								
40205	Prey Kri	Disaster management training	1	Time	80	Commission of Cambodia for		□

District Data Book 2009: Development Plans and Projects

Commune GIS	Commune	Temporary Agreements				Supporter	Funding Source	Listed in CIP befor DIW
		Project Name	Quantity	Unit	Est.Cost (K.Riels)			
						Development		
40205	Prey Kri	Support food stuff and materials to families affected by disaster	1	time	820	World Vision International - Cambodia		<input type="checkbox"/>
40205	Prey Kri	Crime activities control	1	time	280	Commission of Cambodia for Development		<input type="checkbox"/>
40205	Prey Kri	Disaster management budget support for quarterly meeting	1	time	230	World Vision International - Cambodia		<input type="checkbox"/>
40205	Prey Kri	Commune planning meeting support	1	Time	80	Commission of Cambodia for Development		<input type="checkbox"/>
40205	Prey Kri	Land law dissemination	1	time	13	Department of Land Management, Urban Planning & Construction		✓
Gender								
40205	Prey Kri	Woman and children's rights dissemination	1	training	10	World Vision International - Cambodia		✓
40205	Prey Kri	Women vocational training	1	training	10	World Vision International - Cambodia		✓
40205	Prey Kri	Law against domestic violence dissemination	1	time	10	World Vision International - Cambodia		✓
40205	Prey Kri	Women network strengthening meeting	1	Time	140	Commission of Cambodia for Development		<input type="checkbox"/>
40205	Prey Kri	Woman network planning support	1	Time	120	Commission of Cambodia for Development		<input type="checkbox"/>
40205	Prey Kri	Women Right's Day organizing	1	Time	120	Commission of Cambodia for Development		<input type="checkbox"/>

Source: CDPD, District Level Detail TA resulting from DIW

8.3 Outputs, estimated and actual costs of C/S Fund Projects between 2005 and 2008, by Commune

Commune	Project Type	Budget Year	Output		Quantity	Unit	Unit Cost MR	
			Description	Type			Estimate	Actual
Chol Sar	Irrigation	2005	Earth dam	Repair	1.2	Km	27.03	26.48
Chol Sar	Irrigation	2006	Earth dam	Repair	2.054	Km	29.37	29.10
Chol Sar	Irrigation	2007	Earth dam	Repair	1.08	Km	30.16	29.92
Kaoh Thkov	Irrigation	2005	Earth dam	Repair	0.81	Km	27.73	25.33
Kaoh Thkov	Irrigation	2006	Earth dam	Repair	1.502	Km	36.29	35.60
Kaoh Thkov	Rural Transport	2007	Laterite road	Upgrade	2.66	Km	34.37	33.57
Kampong Ous	Irrigation	2005	Earth dam	Repair	1.06	Km	25.17	21.84
Kampong Ous	Rural Transport	2006	Laterite road	Upgrade	1.3	Km	28.89	28.50
Kampong Ous	Rural Transport	2007	Laterite road	Upgrade	0.87	Km	25.30	25.26
Peam Chhkaok	Irrigation	2005	Earth dam	Repair	1.6	Km	25.09	24.58
Peam Chhkaok	Irrigation	2006	Earth dam	Repair	1.939	Km	27.62	26.98
Peam Chhkaok	Irrigation	2007	Earth dam	Repair	0.75	Km	27.66	27.41
Prey Kri	Rural Transport	2005	Concrete bridge, single span	New	1	Place	31.43	30.70
Prey Kri	Rural Transport	2006	Laterite road	Repair	1.468	Km	32.91	32.00
Prey Kri	Rural Transport	2007	Laterite road	Upgrade	2.6	Km	32.70	31.90
Prey Kri	Rural Transport	2008	Earth road	Repair	1.818	Km	34.81	39.29

*Source: PID***8.4 Total Expenditure on C/S Fund Projects by sector and commune between 2005 and 2008**

Sector	Total Cost in Million Riels				
	Chol Sar	Kaoh Thkov	Kampong Ous	Peam Chhkaok	Prey Kri
Irrigation	85.50	60.92	21.84	78.97	
Rural Transport		33.57	53.76		133.89

Source: PID

8.5 Actual 2009 C/S Fund projects by Commune

Commune	Project Type	Project Output		Quantity	Unit	Fund Source (Riels)		
		Description	Type			Total	C/S	Local Contribution
Chol Sar	Rural Transport	Natural Gravel road	Repair	0.721	km	71,541,101	69,610,901	1,930,200
Chol Sar	Rural Transport	Natural Gravel road	Repair	1.809	km	71,541,101	69,610,901	1,930,200
Kaoh Thkov	Rural Transport	Sand Road	Repair	3.185	km	80,877,050	80,004,650	872,400
Kaoh Thkov	Rural Transport	Sand Road	Repair	1.035	km	80,877,050	80,004,650	872,400
Kampong Ous	Irrigation	Earth dam	Repair	1.7	km	36,163,500	34,163,500	2,000,000
Kampong Ous	Irrigation	Earth dam	Repair	1.7	km	28,237,050	26,237,050	2,000,000
Peam Chhkaok	Rural Transport	Natural Gravel road	Repair	1.88	km	41,573,000	39,073,000	2,500,000
Peam Chhkaok	Rural Transport	Earth road	Repair	2.1	km	30,126,200	28,477,500	1,648,700
Prey Kri	Rural Transport	Natural Gravel road	Repair	1.913	km	57,462,401	54,884,501	2,577,900

Source: PID

9 District level Projects from 2006 to 2009

District Initiative Projects (DIPs) are funded by Danida, DFID and PSDD (UNDP, DFID and SIDA).

Funding for 2006-2008

Between 2006 and 2008 there were 14 provinces funded by PSDD and 10 by Danida and DFID. The list of provinces and who funded these is below

Danida and DFID funded DIPs:

Kampong Cham	Kampong Speu	Koh Kong	Kratie	Monduliri
Pursat	Ratanakiri	Siem Reap	Sihanoukville	Kep

PSDD funded DIPs:

Banteay Meanchey	Battambang	Kampong Chhnang	Kandal	Phnom Penh
Prey Veng	Svay Rieng	Takeo	Kampong Thom	Preah Vihear
Stung Treng	Kampot	Oddar Meanchey	Pailin	

Funding for 2009

In 2009 there was a change to the number of provinces funded by the two streams. Danida and DFID were still funding the same 10 provinces they had been funding the previous three years, but two more provinces were added *Kampong Thom and Kampot*. Now PSDD funds 12 provinces and Danida and DFID fund 12.

9.1 District Initiative Infrastructure Projects from 2006 to 2009

9.1.1 District Initiative Infrastructure Projects for 2006 to 2008

Date	Project Name	Implementing Agencies	Budget (US\$)	Project Output & Capacity	Number of Beneficiaries
2006	Secondary school and furniture	Education department	18,850.00		
2007	Repair laterite road 5,000 m	Inter-commune	7,611.00		
2008	Rehabilitation of earth road mixed with sand	Inter-commune	8,303.00	3500m	

9.1.2 District Initiative Infrastructure Projects in 2009

No District Initiative Infrastructure Projects have been implemented in this district for 2009

9.2 District Initiative Service Projects from 2006 to 2009

9.2.1 District Initiative Service Projects for 2006 to 2008

Date	Project Names	Implementing agencies	Budget (US\$)	Project Output & Capacity	Number of Beneficiaries
2006	Education on anti-domestic violence law	Women Affairs department	945.00		
2006	Education of land law	Land management department	150.00		
2006	Gender concept training	Women Affairs department	700.00		
2006	Vocational training for women on tailoring	Women Affairs department	2,500.00		
2006	Training child protection networks	Social Affairs department	1,100.00		
2006	Traditional dance training for school students	Culture department	500.00		
2007	Education on use of latrine	District RD	215.35		
2007	Dissemination on use of chemical fertiliser and pesticide	District Agri	100.90		
2007	Training on management of soil fertility (using natural fertilizer & pesticide)	District Agri	400.40		
2007	Dissemination on penalty law and public order	District Police	238.30		
2007	Dissemination on land law	District Land	255.00		
2007	Dissemination on gender, prevention from domestic violence and protection on victims	District WA	538.00		
2007	Education on moral society	District Culture	82.25		
2007	Training on traditional dancing	District Culture	390.00		
2007	Strengthening commune and village women leaders	District WA	339.80		
2007	Conduct training and demonstration on rice cultivation technique	District Agri	171.90		
2008	Domestic violence prevention	DWAO	438.12		
2008	Children network formation	DSWO	180.00		
2008	Strengthen commune women affair and children focal prson	DWAO	132.50		
2008	Legal and civil code announcement	District police	119.00		
2008	Land law announcement	DLTO	324.20		
2008	Traffic law announcement	DP&TO	183.20		
2008	Environment awareness &law	DEA	279.18		
2008	Rice production techniques	DAO	444.00		
2008	Training on traditional culture performance	DCO	375.00		
2008	Strengthen commune road maintenance committee	DRDO	177.82		

9.2.2 District Initiative Service Projects in 2009

Project Name	Sector	Implementing Agency	Budget	Project outputs/ capacities	No. of Beneficiaries		Progress	Remarks on Issues of Progress
					Total	Female		
Training on rice insentive cultivation	AGR	Agriculture Office	\$1,184.50	3 courses	150	90	0%	Sub-contracts just signed on March 12-09
Training on animal health and production	AGR	Agriculture Office	\$833.00	3 courses	90	50	0%	
Dissemination on domestic violence law vulnerable people prevention	GEN	WA Office	\$1,036.00	3 courses	135	85	0%	
Education of life-skills and social morality	SOC	WA Office	\$1,032.50	4 courses	160	110	0%	
Announcement of civil and legal codes	SOC	Police Inspection	\$671.00	4 courses	160	100	0%	
Announcement/strengthening road maintenance committee	RRD	RD Office	\$706.00	2 courses	60	10	0%	
Announcement of children right/protection law	GEN	Social Affairs Office	\$587.00	4 courses	120	70	0%	
Announcement of land law	LUM	LMUCC Office	\$870.00	5 courses	150	80	0%	

9.3 Inter Commune Council Projects in 2008 and 2009

9.3.1 ICC Projects in 2008

Districts	Project Location	Beneficiary Commune/ Sangkat	Outputs	Project Size	Unit	Contract Cost	Fund Sources	
							ICC Fund	Community
Tuek Phos	Chaong Maong, Akphi Wat	Chaong Maong, Akphi Wat	Bridge construction	1	Unit	\$24,156.00	\$24,055.00	\$101.00
			Laterite road upgrade	119	Metre			
Total for Tuek Phos						\$24,156.00	\$24,055.00	\$101.00
Baribour	AngchagnRong,Popel	AngchagnRong,Popel,PechchangVa,KhonRong	Road culvert construction	5	Unit	\$35,810.00	\$35,780.00	\$30.00
			Laterite road upgrade	3,682	Metre			
Total for Baribour						\$35,810.00	\$35,780.00	\$30.00
Samaki Meanchey	Sethey, Thlokvien	Sethey,Thlok Vien, Tbeng Khpuos, Svay, Kreang Lovea, Khnar Chhmar	Road culvert construction	6	Unit	\$31,068.00	\$30,978.00	\$90.00
			Laterite road upgrade	5,194	Metre			
Total Samkimeanchhey						\$31,068.00	\$30,978.00	\$90.00
Rolea B'ier	Prasneb, Banteay Preal	Prasneb, Banteay Preal, Pongro, Krang Leav	Road culvert construction	4	Unit	\$30,130.00	\$30,000.00	\$130.00
			Laterite road upgrade	2,068	Metre			
Total for Rolea B'ier						\$30,130.00	\$30,000.00	\$130.00
Kampong Tralach	Kampong Tralach, Lonwek	Kampong Tralach, Lonwek, Ampil Tik, Chresh	Twin road culvert	3	Unit	\$32,786.00	\$32,586.00	\$200.00
			Laterite road upgrade	4,045	Metre			
Total for Kampong Tralach						\$32,786.00	\$32,586.00	\$200.00
Total for Kampong Chhnang Province						\$153,950.00	\$153,399.00	\$551.00

9.3.2 ICC Projects in 2009

Districts	Project Location	Beneficiary Commune/ Sangkat	Outputs	Project Size	Unit	Contract Cost	Fund Sources	
							ICC Fund	Community
Samaki Meanchey	Sethey, Thlork Vean	Sethey, Thlork Vean, Khnar Chmar, Kraing Lvea, Tbeng Khpos	New Bridge	13	Meter	\$26,337.00	\$26,287.00	\$50.00
			Culvert	1	Place			
			Laterite road upgrade	570	Meter			
Total for Samaki Meanchey						\$26,337.00	\$26,287.00	\$50.00
Kampong Tralach	Chhouk Sar, Thmor Ith	Chhouk Sar, Thmar Ith, Ta Ches, Peany, Ou Russey	Laterite road upgrade	2,700	Meter	\$24,689.36	\$24,624.36	\$65.00
			Culverts	10	Place			
			New Bridge	1	Place			
	Seb, Chhouk Sar	Seb, Chhouk Sar, Toek Hout, Chouen Kriev	Laterite road upgrade	8,977	Meter	\$32,147.81	\$31,947.81	\$200.00
			Culverts	8	Place			
Total Kampong Tralach						\$56,837.17	\$56,572.17	\$265.00
Boribor	Pich Changvar, Trapeang Chan	Pich Changvar, Trapeang Chan, Punley, Popel, Chhnok tru	Laterite road upgrade	3,450	Meter	\$26,995.00	\$26,945.00	\$50.00
			Culverts	1	Place			
Total for Boribor						\$26,995.00	\$26,945.00	\$50.00
Touek Phos	Cheab	Cheab, Khlong Popok, Akphivath, Tang Krasaing	New Spillway	37	Meter	\$50,580.00	\$30,341.00	\$20,239.00
			Earth Dike Upgrade	1,400	Meter			
			Canal Rehabilitation	1,695	Meter			
			Concrete Dike	2	Place			
Total for Kampong Tralach						\$50,580.00	\$30,341.00	\$20,239.00
Total for Kampong Chhnang						\$160,749.17	\$140,145.17	\$20,604.00

Source: ICC project, Ministry of Interior (DoLA), -UNDP project for Local Governance – DDLG

9.4 Other Projects in 2008 and 2009

9.4.1 RPRP

There are no RPRP projects being implemented in this district or province at this time. The RPRP is only being implemented in Svay Rieng and Prey Veng

9.4.1.1 RPRP Projects from 2006 to 2008

No RPRP projects in this district at this time

9.4.1.2 RPRP Projects in 2009

No RPRP projects in this district at this time

9.4.2 Seth Korma

9.4.2.1 Seth Koma 2007

There are no Seth Korma projects being implemented in this district or province at this time.

Source: UNICEF

9.4.2.2 Seth Koma 2008

There are no Seth Korma projects being implemented in this district or province at this time.

Source: UNICEF

9.4.2.3 Seth Koma 2009

There are no Seth Korma projects being implemented in this district or province at this time.

Source: UNICEF

SECTION D: SERVICES AND ORGANIZATIONS

10 Infrastructure

10.1 Length of and Expenditure on Roads in 2008, by District

Roads	KCH	Kampong Chhnang	Boribor	Roleap Ear	Teuk Phos	Kapong Leng	Choul Kiri	Kampong Tralach	Samaky Meanchey
Length of paved road in the district	148	28	30	38	10	0	0	33	9
Length of unpaved roads in the district	235	51	6	56	41	32	0	39	11
Amount spent on construction of roads in 2008 (\$)	664,381	252,250	0	299,684	112,447	0	0	0	0
Amount spent on repair and rehabilitation of roads in 2008 (\$)	433,793	52,986	86,086	77,872	104,578	0	0	86,055	26,217

Note 1: Please note that these data are not necessarily complete or correct. The data are derived from government agencies at provincial and district level which used different recording systems, did not always have complete data or were, sometimes, less than willing to share their data.

Note 2: Please be aware that these data are incomplete due to the fact that the amounts for the construction, repair and rehabilitation recorded reflect only funds provided by the government, not the contributions by any other parties.

10.2 Scale of and Expenditure on Irrigation in 2008, by District

Irrigation	KCH	Kampong Chhnang	Boribor	Roleap Ear	Teuk Phos	Kapong Leng	Choul Kiri	Kampong Tralach	Samaky Meanchey
Number of irrigation schemes operating in 2008	3	0	0	1	0	0	1	1	0
Total nr of hectares under irrigation in dry season 2008	674	0	0	159	0	0	197	318	0
Total funds spent in 2008 on construction of irrigation systems (\$)	n/a	0	0	n/a	0	0	n/a	n/a	n/a
Total funds spent in 2008 on rehabilitation/repair of irrigation systems (\$)	n/a	0	0	n/a	0	0	n/a	n/a	n/a
Total funds spent in 2008 on operation and maintenance (\$)	n/a	0	0	n/a	0	0	n/a	n/a	n/a

Note 1: Please note that these data are not necessarily complete or correct. The data are derived from government agencies at provincial and district level which used different recording systems, did not always have complete data or were, sometimes, less than willing to share their data.

Note 2: Please be aware that the data above are incomplete as these only reflect funds provided by the government, not the contributions by farmers or other parties.

10.3 Power Supply in 2008, by District

Electricity	KCH	Kampong Chhnang	Boribor	Roleap Ear	Teuk Phos	Kapong Leng	Choul Kiri	Kampong Tralach	Samaky Meanchey
Total number of electricity connections to households	5,790	3,236	330	802	509	0	0	913	0
Total number of electricity connections to agencies, companies, organizations	n/a	n/a	n/a	n/a	n/a	0	0	n/a	0
Total volume in KWh of electricity consumed last in 2008	3,204,489	2,869,179	43,300	104,884	60,526	0	0	126,600	0
Total amount collected from users for consumed electricity (\$)	1,173,336	929,614	30,626	89,535	49,454	0	0	74,107	0
Per capita electricity consumption in 2008 in Kwh	32	887	131	131	119	0	0	139	0

Note 1: Please note that these data are not necessarily complete or correct. The data are derived from government agencies at provincial and district level which used different recording systems, did not always have complete data or were, sometimes, less than willing to share their data.

Note 2: These data only record electricity provided by electricity companies and does not include homes powered by generators or batteries (for this information see Section B: General Profile, Part 1: General Information; table 1.3.1 and chart 1.3.4).

Note 3: In most provinces electricity is only provided through town-based networks

Note 4: Per capita consumption is calculated by dividing the total volume of electricity produced in 2008 by the number of people living in each district as per the 2008 census (for the provincial data it is calculated against the number of people living in the province)

11 Health Facilities

Please note that the Operational District (health) boundaries are different to the administrative district boundaries. Therefore the data provided here shows the facilities, staff, NGOs etc in each Operational District within the province NOT the administrative district.

Acronyms

Com Cov	Commune Covered	MW2	Secondary Midwives
CPA	Complementary Package of Activities	NU1	Primary Nurse
Dr	Doctor	NU2	Secondary Nurse
FDH	Former District Hospital	OD	Operational District
HC	Health Center	Others	Other Staff
HC (NB)	Health Center no building	PHD	Provincial Health Department
HP	Health Post	Pop 04-05	Population Covered 2004 or 2005
MA	Medical Assistant	RH	Referral Hospital
MPA	Minimum Package of Activities	Vil Cov	Village Covered
MW1	Primary Midwives	VIL-HC	Distance from Village to Health Center

11.1 Health Facilities in the Province, by Operational District

Kompong Chhang	OD	RH	HC	HP
Kampong Chhnang.	1	1	23	3
Kampong Tralach	1	1	11	
Total	2	2	34	3
Total	10	10	135	0

11.2 Health Facilities and Staff in the province, by Operational District

This table shows health facilities, staff and coverage of health facilities in each operational district.

No	Facility Name	Type	Class	Dr	Ma	Nu2	Nu1	Mw2	Mw1	Others	Com Cov	Vil Cov	Pop. 04-05
Kampong Chhnang.													
1	Akphivoadth	FDH	CPA+MPA	1	0	2	6	2	2	1	4	24	19,801
2	Cheung Kreav	HC	MPA	0	0	1	2	1	2	3	2	15	8,769
3	Chhnok Tru	HC	MPA	0	0	4	2	1	0	2	2	8	7,623
4	Chieb	HC	MPA	0	0	1	5	0	0	4	3	28	13,545
5	Chranouk	HC	MPA	0	0	0	5	0	2	0	2	6	8,358
6	Chrey Bak	FDH	MPA	0	0	1	6	1	2	1	2	19	11,620
7	Kampong Chhnang	HC	MPA	1	1	2	2	1	0	2	3	17	17,638
8	Kampong Hau	FDH	CPA+MPA	0	0	1	10	3	1	4	3	17	13,788
9	Krang Skear	HC	MPA	0	0	1	3	0	0	6	2	9	11,781

District Data Book 2009: Development Plans and Projects

No	Facility Name	Type	Class	Dr	Ma	Nu2	Nu1	Mw2	Mw1	Others	Com Cov	Vil Cov	Pop. 04-05
10	Krasang Doh Laeung	HP	Nil	0	0	0	1	0	0	0	1	1	-
11	Peam Chhkaok	HC	MPA	0	0	0	3	0	2	2	3	11	10,815
12	Pech Changvar	HP	Nil	0	0	0	1	0	0	0	1	1	-
13	Phsar	HC	MPA	0	0	1	2	2	1	5	4	20	14,717
14	Phsar Chhnang	HC	MPA	1	0	1	3	1	3	0	2	9	17,717
15	Pongro	HC	MPA	0	0	2	5	1	3	3	4	34	18,267
16	Ponley	FDH	CPA+MPA	1	2	0	10	2	3	4	3	24	17,825
17	Pralay Meas	HC	MPA	0	0	1	3	1	3	1	3	13	8,878
18	Preah Kosamak	HC	MPA	0	1	0	1	0	2	4	2	10	7,730
19	Prey Khmer	HC	MPA	0	0	0	4	2	4	1	3	21	18,358
20	Prey Kri	FDH	CPA+MPA	0	1	2	5	2	2	1	2	8	13,700
21	Srae Thmei	HC	MPA	0	0	3	3	0	2	1	1	12	9,729
22	Svay Chrum	HC	MPA	0	0	2	3	0	0	3	1	22	12,778
23	Svay Rumppear	HC	MPA	0	0	1	4	1	1	0	3	10	11,032
24	Tang Krasang	HC	MPA	0	0	1	1	1	0	4	2	12	8,461
Total:				4	5	27	90	22	35	52	58	351	282,930
Kampong Tralach													
1	Trapeang Chan	HC	MPA	0	0	1	0	1	1	8	3	16	10,880
2	Ampil Tuek	HC	MPA	0	0	0	2	0	3	4	1	11	28,532
3	Kampong Tralach Leu	HC	MPA	0	0	1	4	0	3	6	2	19	35,046
4	Koh Thkov	HC	MPA	1	0	1	2	0	1	4	1	10	17,562
5	Krang Lvea	HC	MPA	0	0	1	3	0	2	2	3	13	18,571
6	Longveaek	HC	MPA	1	0	0	4	0	2	4	5	18	23,935
7	Saeb	HC	MPA	0	1	1	3	1	0	3	3	18	42,024
8	Sala Lek Pram	HC	MPA	1	1	1	2	0	2	4	5	20	23,896
9	Svay	HC	MPA	1	0	1	1	0	4	1	3	25	148,349
10	Svay Chuk	HC	MPA	0	0	0	4	0	3	6	3	30	32,064
11	Ta Ches	HC	MPA	0	1	0	3	0	2	3	2	20	133,224
Total:				4	3	7	28	2	23	45	31	200	514,083
Total All				8	8	34	118	24	58	97	89	551	797,013

Source: MEDiCAM – Infrastructure - (http://www.medicam-cambodia.org/hsi/health_system/srch/index.asp?cboLcn=6&cmdSearch=Search&cboCHName=&cboType=)

11.3 Deliveries in 2007 in the Province, by Operational District

OD	Deliveries	Deliveries at home		Deliveries	Total deliveries	Total deliveries
	at HC	By Health Staff	ByTBAs	at RH	by Health Staff	by health staff and TBAs
Kampong Chhnang	1630	723	2367	667	3020	5387
Kampong Tralach	1283	157	1597	398	1838	3435
Boribo	1241	119	1103	0	1360	2463
<i>Sub-total</i>	<i>4154</i>	<i>999</i>	<i>5067</i>	<i>1065</i>	<i>6218</i>	<i>11285</i>

Source: MoH, Annual Statistics 2007

12 Education³

12.1 Schools, Classes, Students, Staff, for all levels, for 2007/2008 by District

District	Number of Schools	Disadv. Schools	Number of Classes	Classes in Pagoda	Enrollment		Repeaters		Teaching Staff		Non-Teaching Staff		Total Staff	
					Total	Girl	Total	Girl	Total	Female	Total	Female	Total	Female
Baribo	43	0	328	0	13,456	6,443	1,341	521	319	104	93	17	412	121
Chulkiri	27	0	202	4	8,553	3,931	1,424	581	130	37	28	5	158	42
Kampong Chhnang	16	0	290	0	12,819	6,051	551	187	434	206	109	48	543	254
Kampong Leng	37	0	262	3	10,897	5,168	1,498	655	193	65	43	13	236	78
Kampong Tralach	59	0	488	2	21,553	10,064	1,855	786	414	131	99	22	513	153
Rolea Pa-ir	93	0	584	0	22,058	10,693	1,709	675	652	309	142	45	794	354
Samaki Meanchey	40	0	371	3	17,684	8,523	1,854	747	295	62	69	7	364	69
Teuk Phos	51	0	366	2	15,036	7,363	829	357	294	80	60	13	354	93
Whole Province	366	0	2,891	14	122,056	58,236	11,061	4,509	2,731	994	643	170	3,374	1,164
- Urban Area	16	0	290	0	12,819	6,051	551	187	434	206	109	48	543	254
- Rural Area	350	0	2,601	14	109,237	52,185	10,510	4,322	2,297	788	534	122	2,831	910

12.2 Characteristics of Schools and School Principals for 2007/2008 by Commune

Commune	Number of Schools				2 - Shift	Floating	Schools	Attached	Schools Without		Characteristics of School Principals (Incharge)			
	Pre-Sch	Primary	College	Lycee	Schools	Schools	in Pagoda	Pre-Sch	Water Sup.	Latrine	Avg. Age	Avg. Service	U.Sec+ Ed.	Female
Chol Sar	0	5	1	0	5	0	0	0	5	4	27.7	9.8	4	0
Kaoh Thkov	0	7	1	0	7	0	0	0	5	5	39.6	17.1	1	0
Kampong Ous	0	2	0	0	2	0	1	0	0	1	37.8	20.0	0	1
Peam Chhkaok	0	4	1	0	4	0	1	0	5	4	38.2	14.8	2	0
Prey Kri	2	3	0	1	3	0	2	2	6	3	38.8	19.7	0	3

³ All the data for section 12 comes from the Ministry of Education, Youth and Sport (MoEYS)

12.3 Enrolment by Level of Education, 2006/2007 by Commune

Commune	School	Pre school		Primary School		Lower Secondary School		Upper Secondary School		Enrolment	
		Total	Female	Total	Female	Total	Female	Total	Female	Total	Female
Chol Sar	4	0	0	1511	704	0	0	0	0	1511	704
Kaoh Thkov	8	0	0	1977	942	206	108	0	0	2183	1050
Kampong Ous	2	0	0	743	346	0	0	0	0	743	346
Peam Chhkaok	5	0	0	1215	576	60	32	0	0	1275	608
Prey Kri	6	83	41	1940	885	622	271	0	0	2645	1197

12.4 Enrolment by Level of Education, 2007/2008 by Commune

Commune	School	Pre school		Primary School		Lower Secondary School		Upper Secondary School		Enrolment	
		Total	Female	Total	Female	Total	Female	Total	Female	Total	Female
Chol Sar	6	0	0	1502	686	61	33	0		1563	719
Kaoh Thkov	8	0	0	1971	934	270	122	0		2241	1056
Kampong Ous	2	0	0	729	327	0	0	0		729	327
Peam Chhkaok	5	0	0	1336	624	92	35	0		1428	659
Prey Kri	6	80	42	1783	809	683	297	46	22	2592	1170

12.5 Aspects of Enrolment for 2007/2008 by Commune

Commune	% Repeaters (Total)			% Over-age Enrollment (Total)			% Repeaters (Girl)			% Over-age Enrollment (Girl)		
	Primary	L.Sec.	U.Sec.	Primary	L.Sec.	U.Sec.	Primary	L.Sec.	U.Sec.	Primary	L.Sec.	U.Sec.
Chol Sar	23.0	0.0	0.0	28.4	63.9	0.0	23.0	0.0	0.0	28.6	66.7	0.0
Kaoh Thkov	19.2	0.7	0.0	28.1	53.0	0.0	15.8	0.0	0.0	26.8	50.8	0.0
Kampong Ous	22.1	0.0	0.0	30.5	0.0	0.0	20.2	0.0	0.0	27.8	0.0	0.0
Peam Chhkaok	15.7	0.0	0.0	36.9	63.0	0.0	13.9	0.0	0.0	37.0	57.1	0.0
Prey Kri	16.9	3.1	13.0	19.3	59.2	47.8	14.5	1.0	9.1	19.8	53.5	45.5

12.6 School Buildings for all schools in the District for 2007/2008, by Commune

Commune	Total Number of		Concrete/Brick Structure		Wooden Structure		Bamboo Structure		New Buildings		Buildings Without Good		
	Buildings	Rooms	Buildings	Rooms	Buildings	Rooms	Buildings	Rooms	Repaired	Constructed	Floor	Roof	Wall
Chol Sar	8	26	5	19	3	7	0	0	0	0	0	1	0
Kaoh Thkov	12	43	9	35	3	8	0	0	0	4	2	0	2
Kampong Ous	4	15	4	15	0	0	0	0	0	0	1	0	0
Peam Chhkaok	7	31	7	31	0	0	0	0	1	3	3	0	0
Prey Kri	10	43	9	41	1	2	0	0	0	3	3	0	1

12.7 Conditions of Classrooms and Existence of Separate School Office and Library, by Commune

Commune	Number of Class rooms	Number of Classrooms			Classrooms Without Good			Number of Furniture needed				Schools with Separate	
		in Pagoda	New Repaired	New Constr.	Floor	Roof	Wall	Desks	Chairs	Black-board	Teacher Table	Office	Library
Chol Sar	20	4	0	0	0	2	0	134	74	0	10	2	0
Kaoh Thkov	32	0	0	18	8	0	6	72	27	0	6	4	1
Kampong Ous	13	0	0	0	3	0	0	0	0	0	0	2	0
Peam Chhkaok	21	0	5	15	0	0	0	0	0	0	0	2	1
Prey Kri	39	0	0	12	14	0	6	30	30	1	2	2	3

12.8 Community Participation and Financing across all schools in the District for 2007/2008 by Commune

Commune	Parent Association				Comm. Teachers	Teaching Monks	PAP Fund (Riel)		Number of Schools Obtaining Funds from				
	Exists	Held Meet	Total	Female			per Student	per School	Sch. Income	Community	Gvt. For building	Abroad	IOs/NGOs
Chol Sar	4	3	8	1	0	0	7,941	2,999,750	0	0	0	0	0
Kaoh Thkov	8	7	10	1	0	0	10,063	2,442,750	0	2	0	1	0
Kampong Ous	2	2	6	1	0	0	8,844	3,285,500	0	0	0	0	0
Peam Chhkaok	5	5	6	1	0	0	8,011	3,813,000	0	0	0	0	1
Prey Kri	5	3	3	0	0	0	16,175	7,123,600	0	0	0	0	0

12.9 Percentage Student Flow Rates and Graduation by level 2006/2007, by Commune

Commune	Primary Level (Grades 1-6)			Lower Secondary Level (Grades 7-9)			Upper Secondary Level (Grades 10-12)			Successful Candidates		
	Promotion	Repetition	Dropout	Promotion	Repetition	Dropout	Promotion	Repetition	Dropout	Grade 6	Grade 9	Grade 12
Chol Sar	73.1	22.8	4.0	0.0	0.0	0.0	0.0	0.0	0.0	188	0	0
Kaoh Thkov	75.8	19.1	5.1	70.9	1.0	28.2	0.0	0.0	0.0	214	23	0
Kampong Ous	68.6	21.7	9.7	0.0	0.0	0.0	0.0	0.0	0.0	40	0	0
Peam Chhkaok	79.3	17.3	3.4	70.0	0.0	30.0	0.0	0.0	0.0	57	0	0
Prey Kri	73.0	15.5	11.5	66.1	3.4	30.5	0.0	0.0	0.0	236	40	0

13 Staff and Resources at the District

This chapter presents data from the District Information System, collected around the middle of 2009 unless otherwise specified.

13.1 District Councilors elected in 2009

Name	Sex	Year of Birth	Function	Phone
ស៊ឹម យី	M	1951	Chairperson of The Council	012-737 042
ឡុង បាន	M	00-00-19	Councillor	
ជិត សារិទ្ធិ	M	1953	Councillor	012-737 048
យិន សាមេធ	M	1952	Councillor	012-783 167
ស្រង ហាង	M	1948	Councillor	097-935 7950
អេង សារ៉េន	M	1968	Councillor	092-714 204
គង់ សារី	F	00-00-19	Councillor	
អេង សៀន	M	1952	Councillor	092-624 346
សុខ សំអាត	F	1967	Councillor	092-330 865
ឡាន លន់	M	1958	Councillor	015-423 011
ជុំ ឡើន	F	1961	Councillor	085-856 748
ប៊ុល ខេន	M	1951	Councillor	097-857 9547
ធួ ចិន្តា	M	1977	Councillor	017-489 021

13.2 Committees of the Council

Please note at the time of producing the district data books the composition of the committees was not known for all district councils and therefore data were not available for 13.2.1, 13.2.2, 13.2.3.

13.2.1 Technical Facilitation Committee

13.2.2 Women's and Children's Affairs Committee

13.2.3 Procurement Committee

13.3 Board of Governors

Name	Sex	DoB	Function	Salary Level	Body	Phone
យិន សារ៉េន	M	1966	District Governor			015-700 742
អោក យីម	F	1954	District Deputy Governor	២៣.៧	Medium Civil Servant	016-761 024
ស៊ឹម សោភ័ណ	M	1954	District Deputy Governor	២១.៤	Medium Civil Servant	016-631 805
ស៊ឹម សារ៉េន	M	1960	District Deputy Governor	២១.៤	Medium Civil Servant	012-180 2912

13.4 Offices under Sala Krong, Sala Srok and Sala Khan

Office Name	Chief		Deputy Chief		No. of Staff				Office Area (m2)	No of vehicle (public or program)	
					State		Contract			vehicle	moto
	M	F	M	F	M	F	M	F			
Adminnistration Office	1	0	0	0	5	1	0	0	135.95	0	0
Economy Office	1	0	0	0	2	1	0	0	0	0	0
Social Affair Office	0	0	1	0	3	1	0	0	0	0	0

13.5 Municipality/District/Khan line offices

Office Name	Chief		Deputy Chief		No. of Staff				Office Area (m2)	No of vehicle (public or program)	
					State		Contract				
	M	F	M	F	M	F	M	F		vehicle	moto
District/ Khan Police Headquarter	1	0	4	0	54	0	0	0	42	0	4
District/ Khan Military Police Headquarter	1	0	0	0	3	0	0	0	0	0	0
District/ Khan Military Subregion	1	0	3	0	13	0	0	0	Borrow	0	0
Planning Office	1	0	0	0	0	0	0	0	Borrow	0	0
Rural Development Office	1	0	0	0	0	0	0	0	Borrow	0	0
Women Affairs Office	0	1	0	0	0	0	0	1	Borrow	0	0
Environment Office	1	0	0	0	0	0	0	0	Borrow	0	0
Education Office	1	0	1	0	6	1	0	0	Borrow	0	0
Agriculture Office	1	0	1	0	0	0	0	1	56	0	1
Social Affairs Office	0	0	1	0	0	0	0	0	Borrow	0	0
Culture Office	0	1	0	0	0	0	0	0	Borrow	0	0
Cult and Religion Office	1	0	0	0	0	0	0	0	Borrow	0	0
Information Office	1	0	0	0	0	0	1	0	Borrow	0	0
Public Work Office	1	0	1	0	0	0	0	0	Borrow	0	0
Post Office	1	0	0	0	0	0	0	0	Borrow	0	0
Lan Management Office	1	0	1	0	0	0	2	0	205.92	0	0

13.6 Properties and Equipment of District Administration

13.6.1 Buildings

Description	Unit	Number	Remark
Office building type			
- Concrete	building	1	
- Wood	building	0	
- Mixed	building	0	
Total floor space	m2		
- Concrete	m2	135.95	
- Wood	m2	0	
- Mixed	m2	0	
Building condition			
- Concrete	%	30	
- Wood	%	0	
- Mixed	%	0	
Office reserved land area	m2	0	
Total office land area	m2	119,698	

13.6.2 Means of Transport available at the District Administration

Description	Unit	Number	Remark
Vehicle (type, size and condition)	Vehicle	0	
Motorcycle (type, size and condition)	Motor	0	

13.6.3 Equipment in District Offices

Description	Unit	Number	Remark
Generator	per set	0	
Photocopy machine at the office	per set	0	
Private photocopy machine at the district town	place	0	
Telephone network (mobile line service)	network	0	
Telephone network (land line service)	network	0	
Fax (include Fax number)	per set	0	
Computer	per set	0	
Printer	per set	0	
Scanner	Per set	0	
Number of computers those can access Internet and email services in the municipality/ district/khan office (including the technical line offices (please provide the email address)	set	0	
Typewriters (including the technical line offices)	per set	1	
Staff of Municipality/district/khan office can use computer	person	2	

13.6.4 Equipment and facilities at the District Town

Description	Unit	Number	Remark
Availability of electricity at noon	Nr Hours	0	
Private internet and email services in the municipality/ district/khan town.	place	0	

13.7 Registered Revenue of the District Administration in 2008⁴

13.8 Services in the District

13.8.1 Public Sector Services

Type of Infrastructure/services	Unit	Number	
		Public	Private
Schools			
Pre-school	room	2	0
Primary School	room	141	0
Secondary school	room	8	0
High School	room	16	0
University	room		
Health			
Health post	place		
Health center	place	3	0
Referral Hospital	bed		

⁴ Please note that the data in this table are at best estimates. If the table appears blank it does not mean there is no revenue, just that the data have not been recorded/entered.

13.9 Civil Society Organizations active in the District

13.9.1 NGOs, Associations, Programs and Projects

Name	Abbr.	Sector Activities	No. of Target Communes	No. of Target Villages	Office in District
NA	CCD	សេវាកម្ម	0	0	No
NA	WVC	សេវាកម្ម	3	10	Yes

13.9.2 Political Parties active in the Municipality, District and Khan

Name	Abbr.	Office in District
Cambodian People Party	CPP	Yes
FUNCINPEC Party	FUNCINPEC	Yes
NRP	NRP	Yes
SAM RAINSY Party	Sam Rainsy Party	Yes

13.10 Private Sector Organizations

13.10.1 Registered Companies in 2008, by District

On private sector at commune and/or district level	KCH	Kampong Chhnang	Boribor	Roleap Ear	Teuk Phos	Kapong Leng	Choul Kiri	Kampong Tralach	Samaky Meanchey
Businesses and Companies									
Number of registered agricultural enterprises (except family farms)	1	0	0	1	0	0	0	0	0
Number of registered shops, restaurants, transporters and other services	1,398	863	150	169	78	0	0	138	0
Number of manufacturing companies	9	2	0	3	0	0	0	3	1
Number of registered forestry enterprises	34	0	3	16	3	5	0	6	1
Number of registered mining companies (Rock)	3	0	0	2	0	0	1	0	0
Number of financial institutions	n/a	n/a	n/a	n/a	n/a	n/a	n/a	n/a	n/a
Number of other commercial institutions	6	1	0	1	0	0	0	3	1
Estimated number of informal enterprises (not registered)	n/a	n/a	n/a	n/a	n/a	n/a	n/a	n/a	n/a
Employment									
Number of people employed in 2008 by companies or any other enterprises	8,195	1,448	558	2,032	425	178	107	2,039	1,408
Investment									
Amount invested in 2008 by private sector (\$)	n/a	n/a	n/a	n/a	n/a	n/a	n/a	n/a	n/a
Markets									
Number of markets, operating at least weekly	9	2	3	0	1	1	0	2	0

Note: These data are not comprehensive as different companies and business are registered with different departments and not all departments were able or willing to provide detailed information. The number of informal enterprises reflects a rough estimate, made at provincial level and could not be verified.

Source: Unofficially collected at Provincial Level

13.10.2 Farmers in 2008, by District

Credit	KCH	Kampong Chhnang	Boribor	Roleap Ear	Teuk Phos	Kapong Leng	Choul Kiri	Kampong Tralach	Samaky Meanchey
Volume of credit provided to farmers in 2008 (\$)	n/a	n/a	n/a	n/a	n/a	n/a	n/a	n/a	n/a
Number of farmers receiving credit in 2008	n/a	n/a	n/a	n/a	n/a	n/a	n/a	n/a	n/a
Volume of credit provided to companies in 2008 (\$)	n/a	n/a	n/a	n/a	n/a	n/a	n/a	n/a	n/a

Note: Please note that these data are not necessarily complete or correct. The data are derived from government agencies at provincial and district level which used different recording systems, did not always have complete data or were, sometimes, less than willing to share their data.

Source: Unofficially collected at Provincial Level

SECTION E: POVERTY DATA

14 Data on Poverty

14.1 Predicted Poverty Rates for 2009, by commune

The **Predicted Family Poverty Rate** is based on a statistical model (robust multilevel mixed effect regression) at village level developed by the NCDD M&E Unit and uses CDB data for making an estimate of the predicted poverty rate (this is: *the portion of total families in the district or commune who are expected to be poor*) for the following year using current year data.

The basis for this predicted poverty rate also uses IDPoor (a project of the Ministry of Planning with technical assistance provided by GTZ) data

Commune	2004	2009
Chol Sar	43.90%	38.20%
Kaoh Thkov	43%	38.80%
Kampong Ous	47.90%	41.50%
Peam Chhkaok	45.20%	39%
Prey Kri	40%	33.60%

14.2 Poverty data from survey

14.2.1 Identification of Poor Households Program (IDPoor)

The Ministry of Planning IDPoor Program has developed standardized Procedures for Identification of Poor Households in rural areas. These Procedures are implemented using a participatory and consultative process by sub-national government structures and community representatives.

The IDPoor Program is managed by the Ministry of Planning (MOP), in cooperation with the Ministry of Interior's Department of Local Administration (DOLA). The program is supported by the Federal Republic of Germany, with technical assistance provided by German Technical Cooperation (GTZ). In 2009, AusAID also provided funding support to the Program.

Objective

The IDPoor Program aims to implement the Procedures for Identification of Poor Households in rural areas as widely as possible, in order to provide data on the level of poverty of areas and households that can be used by a large range of institutions and organizations for targeting services and development assistance to poor areas and poor households.

Coverage: During 2007, 2008 and 2009 the IDPoor Procedures have been implemented in 18 provinces (with partial or complete coverage), covering a total of around 7000 rural villages. The MOP and a number of NGO partners who are Health Equity Fund Operators have collaborated in collecting this data from different areas.

Categorization: Identified poor households are classified under two poverty categories: Poor Level 1 (very poor), and Poor Level 2 (poor). Households are classified based on data collected using a standard questionnaire, together with consideration by villagers of these households' special circumstances.

Further information: Please go to the IDPoor Program webpage at www.mop.gov.kh/Projects/IDPoor/tabid/154/Default.aspx

This District has not yet been covered by IDPoor